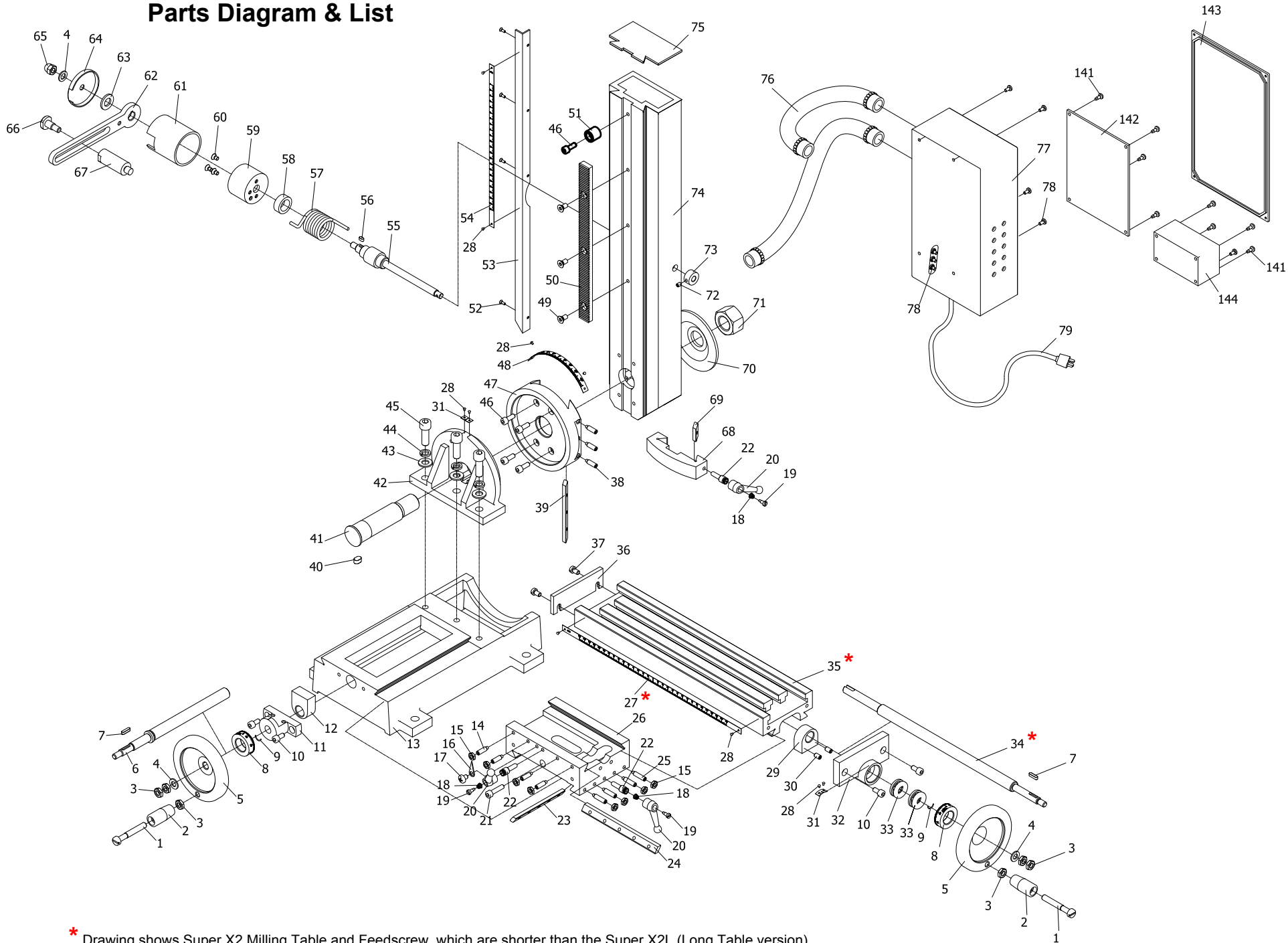
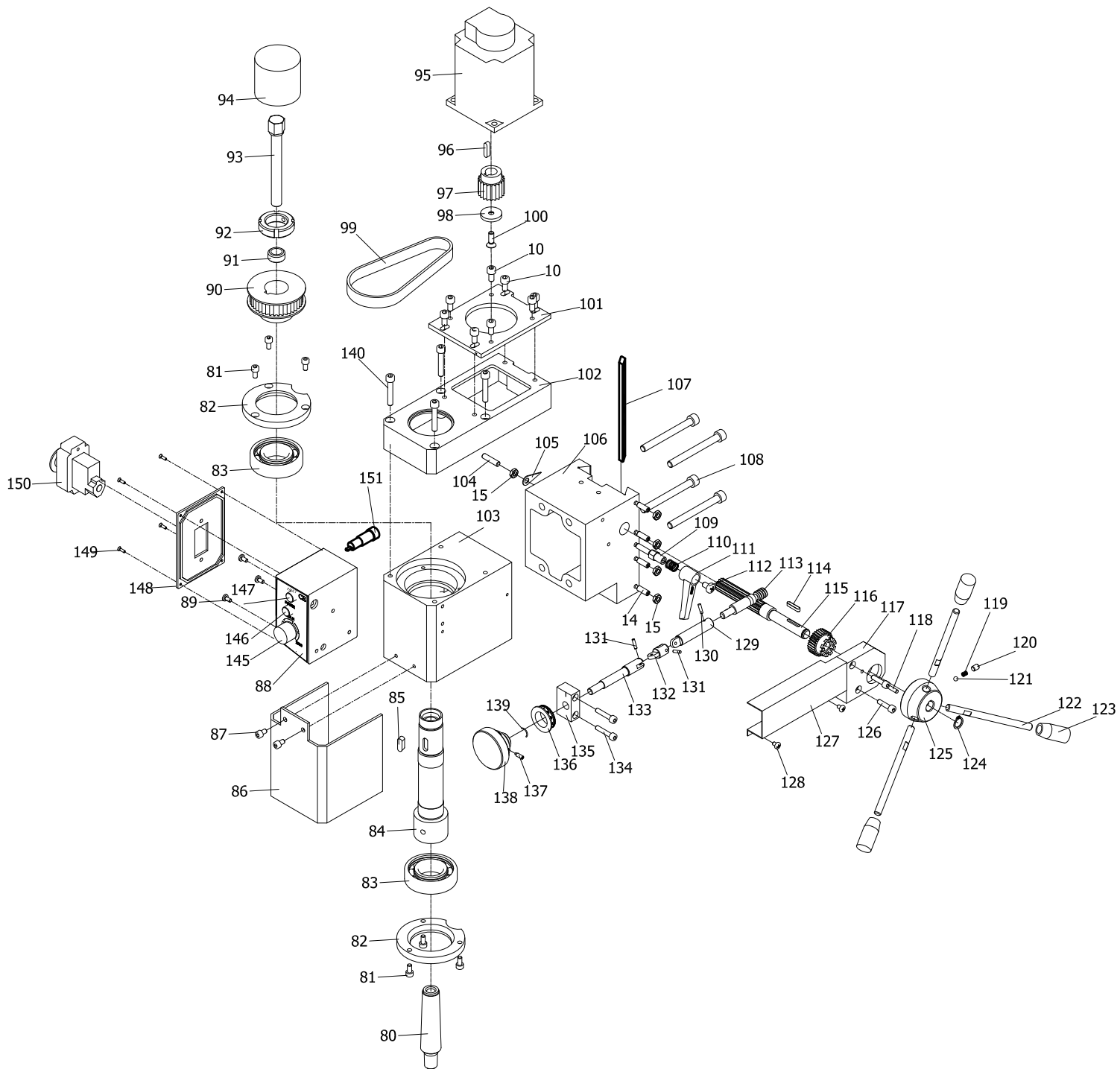


Super X2 / Super X2L Parts Diagram & List



* Drawing shows Super X2 Milling Table and Feedscrew, which are shorter than the Super X2L (Long Table version)



| No. | Description | QTY. |
|-----|---------------------------|------|
| 1 | Screw | 2 |
| 2 | Handle | 2 |
| 3 | Nut | 6 |
| 4 | Washer | 3 |
| 5 | Handle | 2 |
| 6 | X-axis feeding screw | 1 |
| 7 | Key | 2 |
| 8 | Dial | 2 |
| 9 | Spring | 2 |
| 10 | Screw | 12 |
| 11 | X-axis feeding screw seat | 1 |
| 12 | X-axis feeding screw nut | 1 |
| 13 | Base | 1 |
| 14 | Screw | 8 |
| 15 | Nut | 13 |
| 16 | Indicator | 1 |
| 17 | Screw | 1 |
| 18 | Spring | 3 |
| 19 | Screw | 3 |
| 20 | Handle | 3 |
| 21 | Screw | 1 |
| 22 | Bolt | 3 |
| 23 | X-axis wedge | 1 |
| 24 | Y-axis wedge | 1 |
| 25 | Screw | 4 |
| 26 | Saddle | 1 |
| 27 | Ruler | 1 |
| 28 | Screw | 10 |
| 29 | Nut | 1 |
| 30 | Screw | 2 |
| 31 | Guide finger | 2 |
| 32 | Bearing seat | 1 |
| 33 | Bearing | 2 |
| 34 | Y-axis feeding screw | 1 |
| 35 | Working | 1 |
| 36 | End cover | 1 |
| 37 | Screw | 2 |
| 38 | Screw | 3 |
| 39 | Wedge | 1 |
| 40 | Key | 1 |
| 41 | Shaft | 1 |
| 42 | Bracket | 1 |
| 43 | Washer | 3 |
| 44 | Washer | 3 |
| 45 | Screw | 3 |

| No. | Description | QTY. |
|-----|---------------|------|
| 46 | Screw | 5 |
| 47 | Connect tray | 1 |
| 48 | Ruler | 1 |
| 49 | Screw | 3 |
| 50 | Gear | 1 |
| 51 | Fixed sleeve | 1 |
| 52 | Screw | 4 |
| 53 | Bracket | 1 |
| 54 | Ruler | 1 |
| 55 | Shaft | 1 |
| 56 | Key | 1 |
| 57 | Spring | 1 |
| 58 | Washer | 1 |
| 59 | Spring sleeve | 1 |
| 60 | Screw | 3 |
| 61 | Cover | 1 |
| 62 | Support | 1 |
| 63 | Washer | 1 |
| 64 | End cover | 1 |
| 65 | Nut | 1 |
| 66 | Screw | 1 |
| 67 | Support | 1 |
| 68 | Limit block | 1 |
| 69 | Wedge | 1 |
| 70 | Washer | 1 |
| 71 | Nut | 1 |
| 72 | Screw | 1 |
| 73 | Tighten ring | 1 |
| 74 | Colum | 1 |
| 75 | Cover | 1 |
| 76 | Power line | 2 |
| 77 | Electric box | 1 |
| 78 | Screw | 7 |
| 79 | Plug | 1 |
| 80 | Shank | 1 |
| 81 | Screw | 6 |
| 82 | Oil cover | 2 |
| 83 | Bearing | 2 |
| 84 | Spindle | 1 |
| 85 | Key | 1 |
| 86 | Dustproof | 1 |
| 87 | Screw | 2 |
| 88 | Control box | 1 |
| 89 | Screw | 3 |
| 90 | Spindle pully | 1 |

| No. | Description | QTY. |
|-----|-----------------|------|
| 91 | Fixed sleeve | 1 |
| 92 | Spindle nut | 1 |
| 93 | M12 drawbar | 1 |
| 94 | Cover | 1 |
| 95 | Brushless motor | 1 |
| 96 | Key | 1 |
| 97 | Motor pully | 1 |
| 98 | Washer | 1 |
| 99 | Pully | 1 |
| 100 | Screw | 1 |
| 101 | Connected board | 1 |
| 102 | Cover | 1 |
| 103 | Spindle box | 1 |
| 104 | Screw | 1 |
| 105 | Indicator | 1 |
| 106 | Spindle base | 1 |
| 107 | Wedge | 1 |
| 108 | Screw | 4 |
| 109 | Bolt | 1 |
| 110 | Spring | 1 |
| 111 | Small Handle | 1 |
| 112 | Screw | 1 |
| 113 | Worm | 1 |
| 114 | Key | 1 |
| 115 | Gear 14T | 1 |
| 116 | Gear 29T | 1 |
| 117 | Worm support | 1 |
| 118 | Pin | 1 |
| 119 | Spring | 1 |
| 120 | Screw | 1 |
| 121 | Ball bearing | 1 |
| 122 | Handle | 3 |
| 123 | Handle sleeve | 3 |
| 124 | Washer | 1 |
| 125 | Handle seat | 1 |
| 126 | Screw | 2 |
| 127 | Cover | 1 |
| 128 | Screw | 2 |
| 129 | Sleeve | 1 |
| 130 | Pin | 1 |
| 131 | Pin | 2 |
| 132 | Universal joint | 1 |
| 133 | Universal shaft | 1 |
| 134 | Screw | 2 |
| 135 | Bracket | 1 |

| No. | Description | QTY. |
|-----|----------------------|------|
| 136 | Dial | 1 |
| 137 | Screw | 1 |
| 138 | Small Handle | 1 |
| 139 | Spring | 1 |
| 140 | Screw | 4 |
| 141 | Screw | 8 |
| 142 | PC board | 1 |
| 143 | Cover | 1 |
| 144 | Filter | 1 |
| 145 | Button | 1 |
| 146 | Green lamp | 1 |
| 147 | Yellow lighting pipe | 1 |
| 148 | Cover | 1 |
| 149 | Screw | 8 |
| 150 | Switch | 1 |