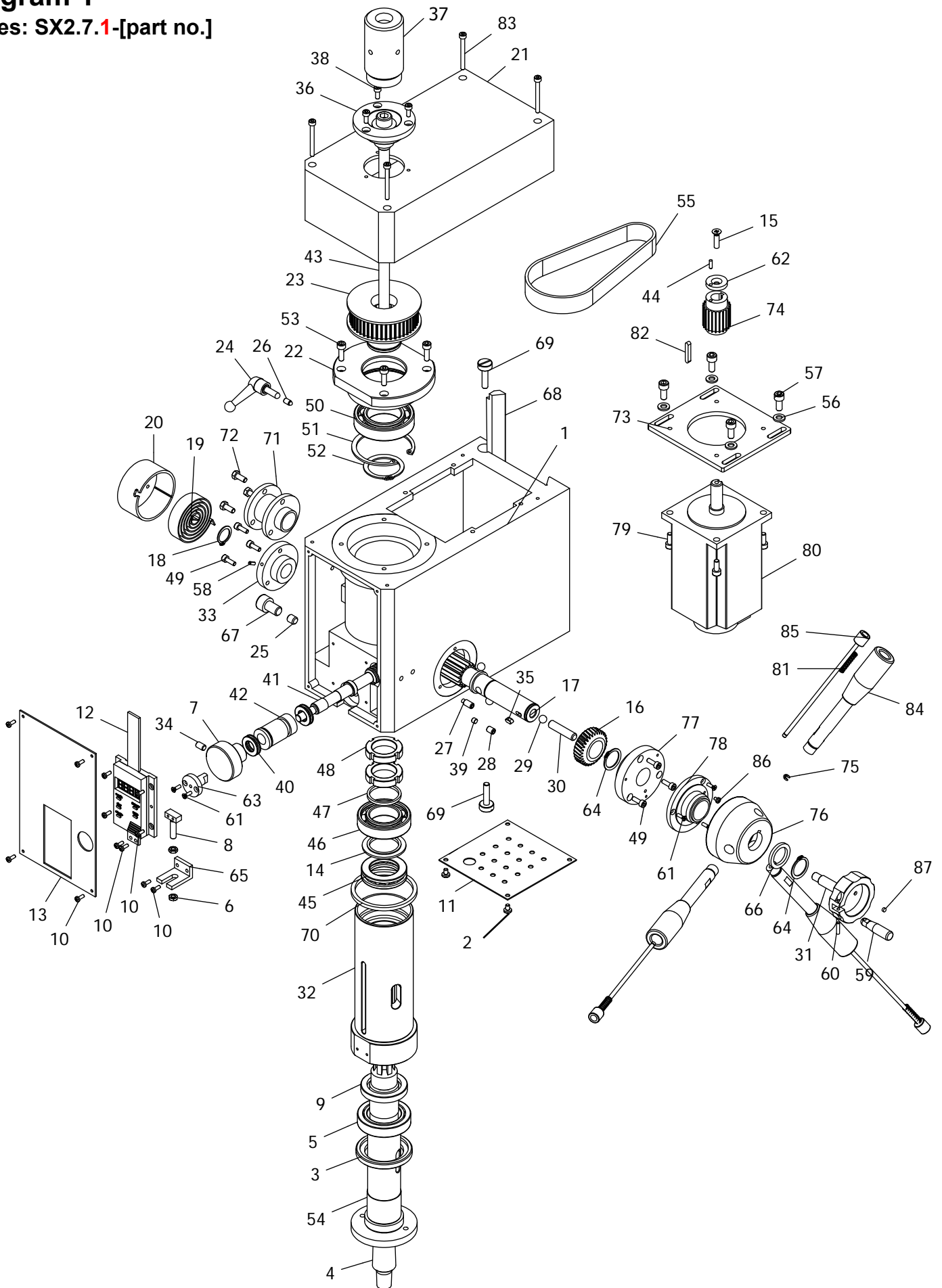


# Parts Breakdown For SX2.7 Milling Drilling Centre - MT3 Spindle

## Diagram 1

Codes: SX2.7.1-[part no.]



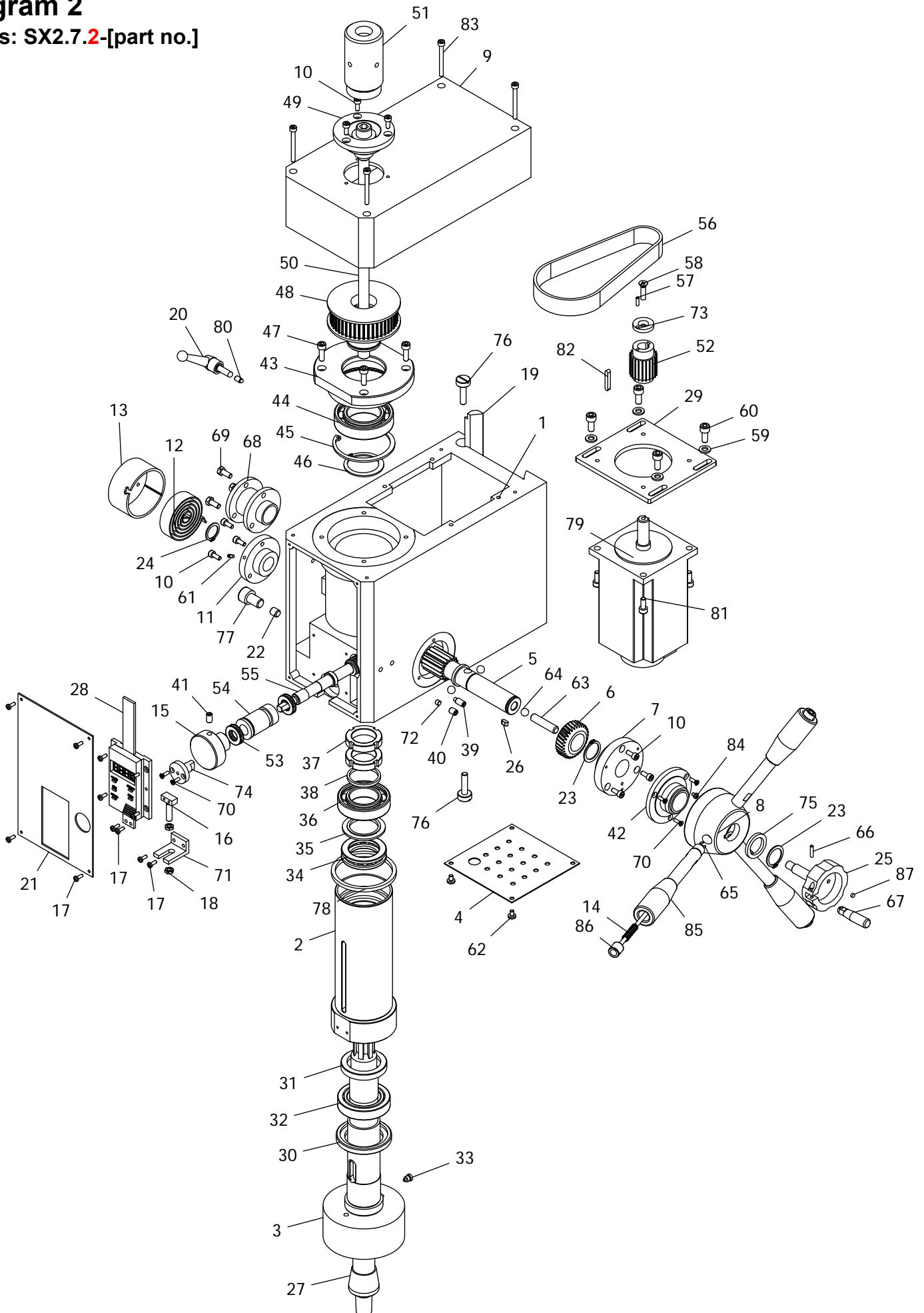
No.	Description	Qty.
1-1	Spindle Box	1
1-2	Cross Recessed Small Pan Head Screw H Type M4x6	2
1-3	Spindle Below Oil Seal Ring I	1
1-4	B16 Taper Shank	1
1-5	Taper Roller Bearing 32907	1
1-6	Hexagon Headed Nut M5	2
1-7	Fine Feeding Hand Wheel	1
1-8	Display Fixed Square Screw	1
1-9	Spindle Sleeve Below Oil Seal Ring II	1
1-10	Cross Recessed Small Pan Head Screw Z Type M3x8	12
1-11	Base Plate	1
1-12	Digital Depth Readout	1
1-13	Head Front Cover	1
1-14	Up Washer II	1
1-15	Cross Recessed Counter Head Screws M5x20	1
1-16	Bevel Gear	1
1-17	Gear Shaft	1
1-18	Check Ring 16	1
1-19	Clock Spring	1
1-20	Clock Spring Cover	1
1-21	Spindle Box Cover	1
1-22	Bearing Seat	1
1-23	Spindle Timing Pulley	1
1-24	Small Handle Assembly	1
1-25	Spindle Sleeve Locking Shaft	1
1-26	Tighten The Top Rod	1
1-27	Slotted Headless Set Screws M6x8	1
1-28	Inner Six Angle Locking Screws Flat Head M6x14	1
1-29	Ball 8	3
1-30	Locking Small Shaft	1
1-31	Worm Locking Handle	1
1-32	Spindle Sleeve	1
1-33	Shaft Gear Left Support Flange	1
1-34	Inner Six Angle Locking Screw Flat Head M6x10	1
1-35	Pin	1
1-36	Spindle Up Dust Guard I	1
1-37	Spindle Up Dust Guard II	1
1-38	Hexagon Socket Head Cap Screw M4x10	3
1-39	Eccentric Sleeve Locking Block	1
1-40	Thrust Ball Bearing Single 12x22x5	2
1-41	Worm Shaft	1
1-42	Worm Eccentric Sleeve	1
1-43	Locking Bolt Assembly	1
1-44	Round Pin A 3x10	1
1-45	Thrust Ball Bearing 8106	1
1-46	Deep Groove Ball Bearing 80106	1

No.	Description	Qty.
1-47	Up Washer	1
1-48	Slotted Round Nut	2
1-49	Hexagon Socket Head Cap Screw M4x12	6
1-50	Deep Groove Ball Bearing 80107	1
1-51	Check Ring 62	1
1-52	Check Ring 35	1
1-53	Hexagon Socket Head Cap Screw M5x16	4
1-54	Spindle	1
1-55	Timing Belt	1
1-56	Washer 6	4
1-57	Hexagon Socket Head Cap Screw M6x14	4
1-58	Spring Round Pin 3x8	2
1-59	Assist Small Handle	1
1-60	Round Pin A 3x14	1
1-61	Cross Recessed Counter Head Screws H Type M3x10	5
1-62	Washer	1
1-63	Spindle Sleeve Position Shaft	1
1-64	Check Ring 20	2
1-65	Display Fixed Bracket	1
1-66	Round Gear Shaft Adjust Washer	1
1-67	Hexagon Socket Head Cap Screw M10x16	1
1-68	Z-Axis Gib	1
1-69	Gib Screw	2
1-70	Sleeve Limit Washer	1
1-71	Attachment Bracket	1
1-72	Hexagon Headed Bolt M5x12	3
1-73	Motor Support Plate	1
1-74	Motor Timing Pulley	1
1-75	Spring Washer 3	3
1-76	Handle Seat	1
1-77	Shaft Gear Right Support Flange	1
1-78	Conducting Ring Assembly	1
1-79	Hexagon Socket Head Cap Screw M5x12	4
1-80	Brushless Motor 750W/230V DC	1
1-81	Compress Spring 0.8x6x25	3
1-82	Parallel Key 4x25	1
1-83	Hexagon Socket Head Cap Screw M4x35	4
1-84	Control Rod	3
1-85	Handle Assembly	3
1-86	Cross Recessed Small Pan Head Screw Z Type M3x4	1
1-87	∅4x2 Magnet	1

# Parts Breakdown For SX2.7 Milling Drilling Centre - Drawing 2 - R8 Spindle

## Diagram 2

Codes: **SX2.7.2**-[part no.]



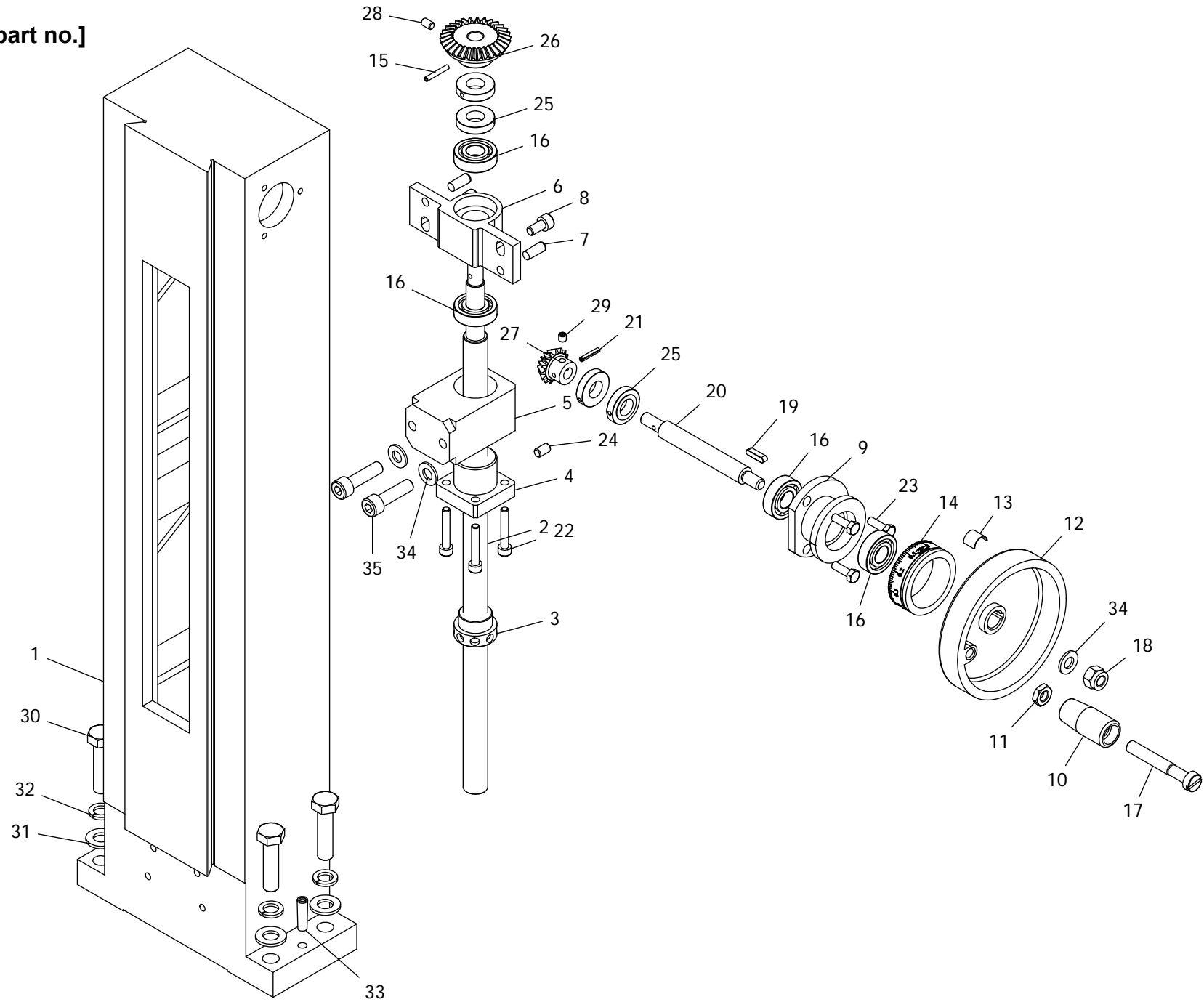
No.	Description	Qty.
2-1	Spindle Box	1
2-2	R8 Spindle Sleeve	1
2-3	R8 Spindle	1
2-4	Base Plate	1
2-5	Gear Shaft	1
2-6	Bevel Gear	1
2-7	Shaft Gear Right Support Flange	1
2-8	Handle Seat	1
2-9	Spindle Box Cover	1
2-10	Hexagon Socket Head Cap Screw M4x10	9
2-11	Shaft Gear Left Support Flange	1
2-12	Clock Spring	1
2-13	Clock Spring Cover	1
2-14	Compress Spring 0.8x6x25	3
2-15	Fine Feeding Hand Wheel	1
2-16	Display Fixed Square Screw	1
2-17	Cross Recessed Small Pan Head Screw Z Type M3x8	12
2-18	Hexagon Headed Nut M5	2
2-19	Z-Axis Gib	1
2-20	Small Handle Assembly	1
2-21	Head Front Cover	1
2-22	Spindle Sleeve Locking Shaft	1
2-23	Check Ring 20	2
2-24	Check Ring 16	1
2-25	Worm Locking Handle	1
2-26	Parallel Key 4x8	1
2-27	Jt6 Taper Shank	1
2-28	Digital Depth Readout	1
2-29	Motor Support Plate	1
2-30	Spindle Below Oil Seal Ring I	1
2-31	Spindle Sleeve Below Oil Seal Ring II	1
2-32	Cone Roller Bearing 32907	1
2-33	Shoulder Cylindrical Key	1
2-34	Thrust Ball Bearing 8106	1
2-35	Up Washer II	1
2-36	Deep Groove Ball Bearing 80106	1
2-37	Slotted Round Nut	2
2-38	Up Washer	1
2-39	Slotted Headless Set Screw Round End M6x14	1
2-40	Inner Six Angle Locking Screw Flat Head M6x8	1
2-41	Inner Six Angle Locking Screw Flat Head M6x10	1
2-42	Conducting Ring Assembly	1
2-43	Bearing Seat	1
2-44	Deep Groove Ball Bearing 80107	1
2-45	Check Ring 62	1
2-46	Check Ring 35	1
2-47	Hexagon Socket Head Cap Screw M5x16	4

No.	Description	Qty.
2-48	Spindle Timing Pulley	1
2-49	Spindle Up Dust Guard I	1
2-50	Locking Bolt Assembly	1
2-51	Spindle Up Dust Guard II	1
2-52	Motor Timing Pulley	1
2-53	Thrust Ball Bearing 12x22x5	2
2-54	Worm Eccentric Sleeve	1
2-55	Worm Shaft	1
2-56	Timing Belt	1
2-57	Round Pin A 3x10	1
2-58	Cross Recessed Counter Head Screws M5x20	1
2-59	Washer	4
2-60	Hexagon Socket Head Cap Screw M6x14	4
2-61	Spring Round Pin 3x8	1
2-62	Cross Recessed Small Pan Head Screw H Type M4x6	2
2-63	Locking Small Shaft	1
2-64	Ball 8	3
2-65	Spring Washer	3
2-66	Round Pin A 3x14	1
2-67	Assist Handle	1
2-68	Attachment Bracket	1
2-69	Hexagon Headed Bolt M5x12	3
2-70	Cross Recessed Counter Head Screws M3x10	5
2-71	Display Fixed Support	1
2-72	Eccentric Sleeve Locking Block	1
2-73	Washer	1
2-74	Spindle Sleeve Position Shaft	1
2-75	Round Gear Shaft Adjust Washer	1
2-76	Gib Screw	2
2-77	Hexagon Socket Head Cap Screw M10x16	1
2-78	Sleeve Limit Washer	1
2-79	Motor	1
2-80	Tighten The Top Rod	1
2-81	Hexagon Socket Head Cap Screw M5x12	4
2-82	Parallel Key 4x25	1
2-83	Hexagon Socket Head Cap Screw M4x40	4
2-84	Cross Recessed Small Pan Head Screw H Type M3x4	1
2-85	Control Rod	3
2-86	Handle Assembly	3
2-87	ø4x2 Magnet	1

# Parts Breakdown For SX2.7 Milling Drilling Centre

## Diagram 3

Codes: SX2.7.3-[part no.]

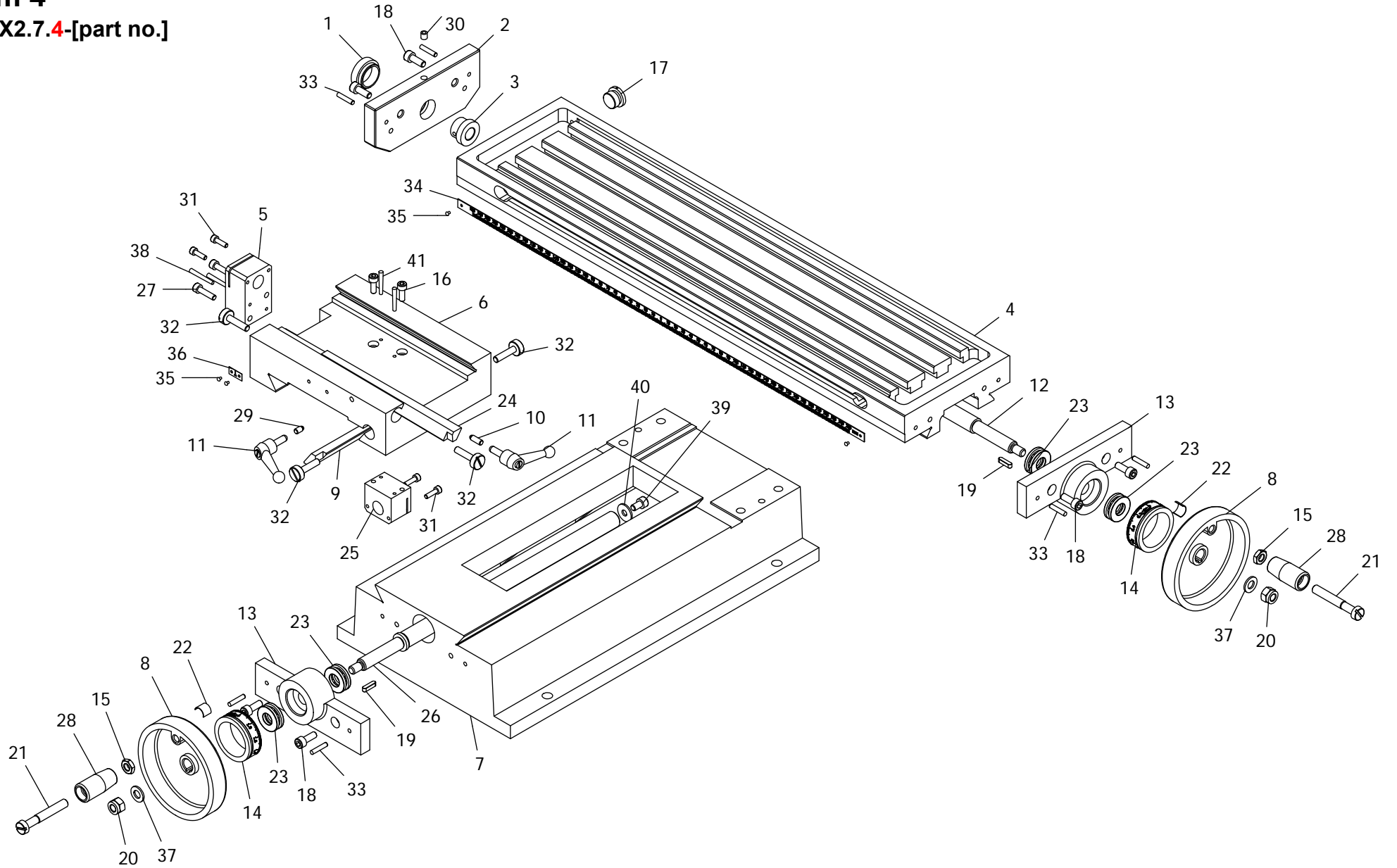


<b>No.</b>	<b>Description</b>	<b>Qty.</b>
3-1	Column	1
3-2	Metric Rise And Down Leadscrew	1
3-3	Metric Rise And Down Locking Nut	1
3-4	Metric Rise And Down Leadscrew Nut	1
3-5	Column Nut Support	1
3-6	Leadscrew Support	1
3-7	Taper Pins With Internal Thread 6x16	2
3-8	Hexagon Socket Head Cap Screw M6x12	2
3-9	Rise And Down Support Seat	1
3-10	Handle	1
3-11	Hex Nut M8	1
3-12	Hand Wheel	1
3-13	Dial Friction Spring	1
3-14	Z-Axis Metric Dial	1
3-15	Spring Round Pin 3x20	1
3-16	Deep Groove Ball Bearing 6001	4
3-17	Slotted Large Cheese Head Screws 85x55	1
3-18	Hex Locking Nut M8	1
3-19	Parallel Key 4x16	1
3-20	Rise And Down Shaft	1
3-21	Spring Round Pin 3x16	1
3-22	Hexagon Socket Head Cap Screw M5x20	4
3-23	Hexagon Headed Bolt M5x16	3
3-24	Inner Six Angle Locking Screws M6x10	1
3-25	Locking Nut	4
3-26	Big Bevel Gear Wheel	1
3-27	Small Bevel Gear Wheel	1
3-28	Inner Six Angle Locking Screws-Cone End M5x8	1
3-29	Inner Six Angle Locking Screws-Cone End M5x5	1
3-30	Hexagon Headed Bolt M10x40	4
3-31	Washer 10	4
3-32	Spring Washer 10	4
3-33	Taper Pins With Internal Thread 6x24	2
3-34	Washer 8	1
3-35	Hexagon Socket Head Cap Screw M8x30	2

# Parts Breakdown For SX2.7 Milling Drilling Centre

## Diagram 4

Codes: SX2.7.4-[part no.]



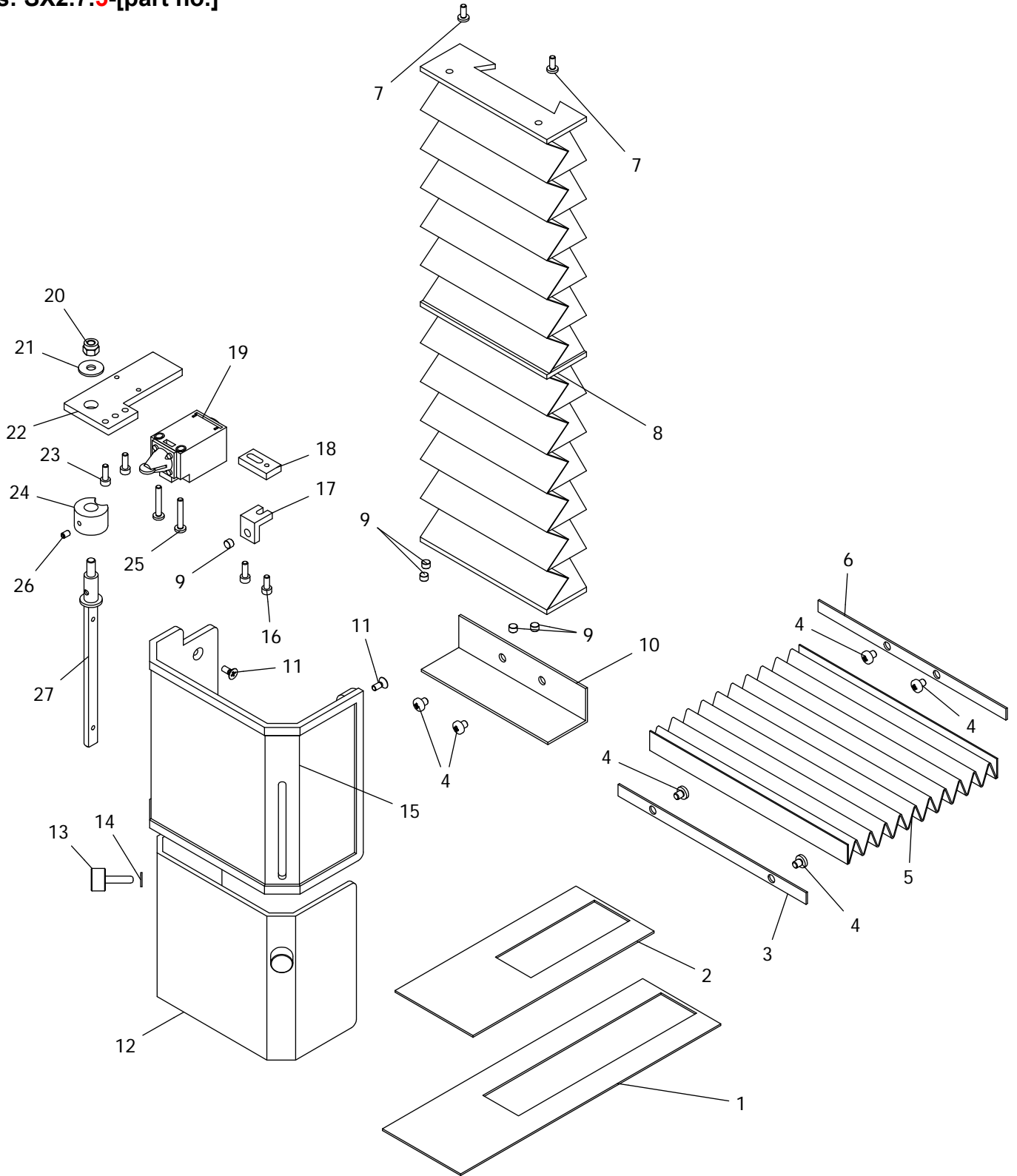
<b>No.</b>	<b>Description</b>	<b>Qty.</b>
4-1	Left Support Bearing Cover	1
4-2	Left Cover	1
4-3	Longitudinal Leadscrew Rod Bracket Left Sleeve	1
4-4	Work Table	1
SX2.7L.4-4	Long Worktable	1
4-5	X-Axis Leadscrew Nut - Metric	1
4-6	Saddle	1
4-7	Base	1
4-8	Hand Wheel	2
4-9	Cross Bevel Wedge	1
SX2.7L.4-9	Cross Bevel Wedge For Sx2.7L	1
4-10	Longitudinal Wedge Locking Crown Bar	1
4-11	Small Handle Assembly	2
4-12	X-Axis Leadscrew - Metric	1
SX2.7L.4-12	X-Axis Long Leadscrew - Metric (Sx2.7L)	1
4-13	Longitudinal\Cross Leadscrew Bearing Seat	2
4-14	X/Y-Axis Metric Dial	2
4-15	Hexagon Nut M8	2
4-16	Hexagon Socket Head Cap Screw M5x14	2
4-17	Plug	1
4-18	Hexagon Socket Head Cap Screw M6x16	6
4-19	Parallel Key 4x16	2
4-20	Hexagon Locking Nut M8	2
4-21	Slotted Large Cheese Head Screws 85x55	2
4-22	Dial Friction Spring	2
4-23	Thrust Ball Bearing 8101	4
4-24	Longitudinal Bevel Wedge	1
4-25	Y-Axis Leadscrew Nut - Metric	1
4-26	Y-Axis Leadscrew - Metric	1
SX2.7L.4-26	Y-Axis Short Leadscrew - Metric (Sx2.7L)	1
4-27	Hexagon Socket Head Cap Screw M5x20	2
4-28	Handle Sleeve	2
4-29	Tighten The Top Rod	1
4-30	Pressure With Pressure Column Oil Cup 6	1
4-31	Hexagon Socket Head Cap Screw M4x14	4
4-32	Gib Screw	4
4-33	Round Pin A4x20	6
4-34	Scale Height	1
4-35	Label Rivet 2x3	4
4-36	Zero Label	1
4-37	Washer 8	2
4-38	Taper Pin A3x30	2
4-39	Hexagon Socket Head Cap Screw M6x10	1
4-40	Washer 6	1
4-41	Taper Pin B3x26	2



# Parts Breakdown For SX2.7 Milling Drilling Centre

## Diagram 5

Codes: SX2.7.5-[part no.]

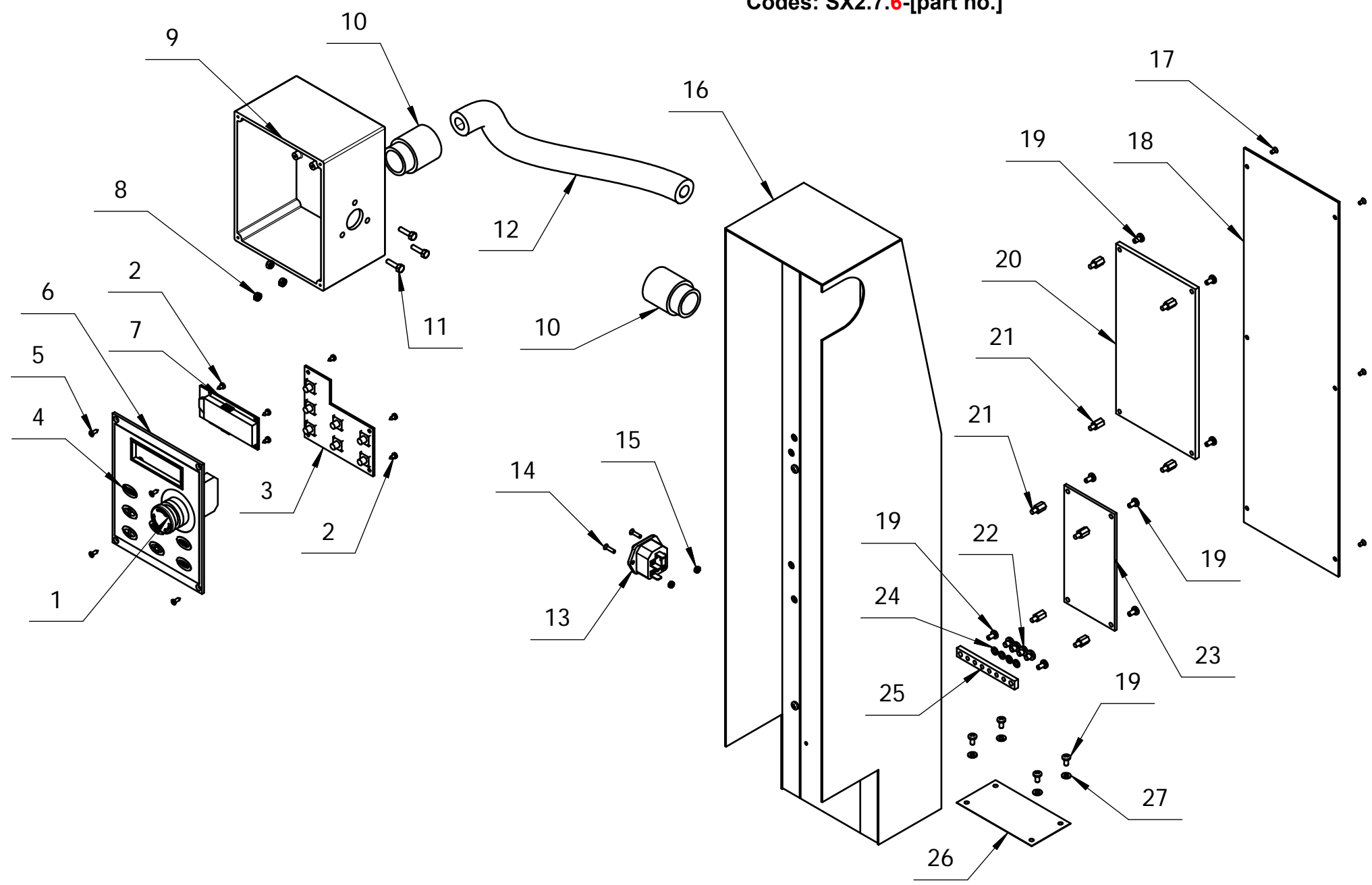


<b>No.</b>	<b>Description</b>	<b>Qty.</b>
5-1	Splash Guard I	1
5-2	Splash Guard II	1
5-3	Filler Strip	1
5-4	Cross Recessed Counter Head Screws M5x6	6
5-5	Dust Guard	1
5-6	Dead Plate	1
5-7	Cross Recessed Counter Head Screws M4x10	2
5-8	Concertina Bellows - Laminated Fabric	1
5-9	ø6 Magnet Steel	5
5-10	Shield Baffle	1
5-11	Cross Recessed Counter Head Screws M4x10	3
5-12	Inner Chuck Guard	1
5-13	Knurled Guard Screw M5X20	2
5-14	Washer 5	2
5-15	Outer Chuck Guard	1
5-16	Hexagon Socket Head Cap Screw M4x10	1
5-17	Block	1
5-18	Connecting Plate	1
5-19	Chuck Guard Limit Switch	1
5-20	Hexagon Locking Nut M6	1
5-21	Washer 6	1
5-22	Support Plate	1
5-23	Hexagon Socket Head Cap Screw M4x12	3
5-24	Spacer Bush	1
5-25	Cross Recessed Counter Head Screws M4x25	2
5-26	Inner Six Angle Locking Screw-Cone End Metric M4x6	1
5-27	Chuck Guard Spindle	1

# Parts Breakdown For SX2.7 Milling Drilling Centre

## Diagram 6

Codes: SX2.7.6-[part no.]



<b>No.</b>	<b>Description</b>	<b>Qty.</b>
6-1	Emergency Stop Switch	1
6-2	Tapping Screw	8
6-3	Touch Panel PCB	1
6-4	Touch Panel Overlay	1
6-5	Tapping Screw	4
6-6	Control Box Cover	1
6-7	Spindle Speed Display	1
6-8	Hexagon Headed Nut M4	7
6-9	Control Box	1
6-10	Tube Connector	2
6-11	Hexagon Headed Bolt M4x16	3
6-12	Tube	1
6-13	Power Socket	1
6-14	Cross Recessed Counter Head Screws M3x12	2
6-15	Hexagon Headed Nut M4	2
6-16	Back Cover	1
6-17	Cross Recessed Counter Head Screws M3x6	6
6-18	Back Cover	1
6-19	Cross Recessed Small Pan Head Screw Z Type M4x8	14
6-20	Main Control Board	1
6-21	Hex Spacer	8
6-22	Cross Recessed Small Pan Head Screw M5x6	4
6-23	EMC Filter	1
6-24	Spring Spacer	4
6-25	Grounding Bar	1
6-26	Blow Dust Gauze	1
6-27	Washer	4
6-28	Bluetooth Generator Control Board	1
6-29	Cover	1
6-30	Power Board/230V	1