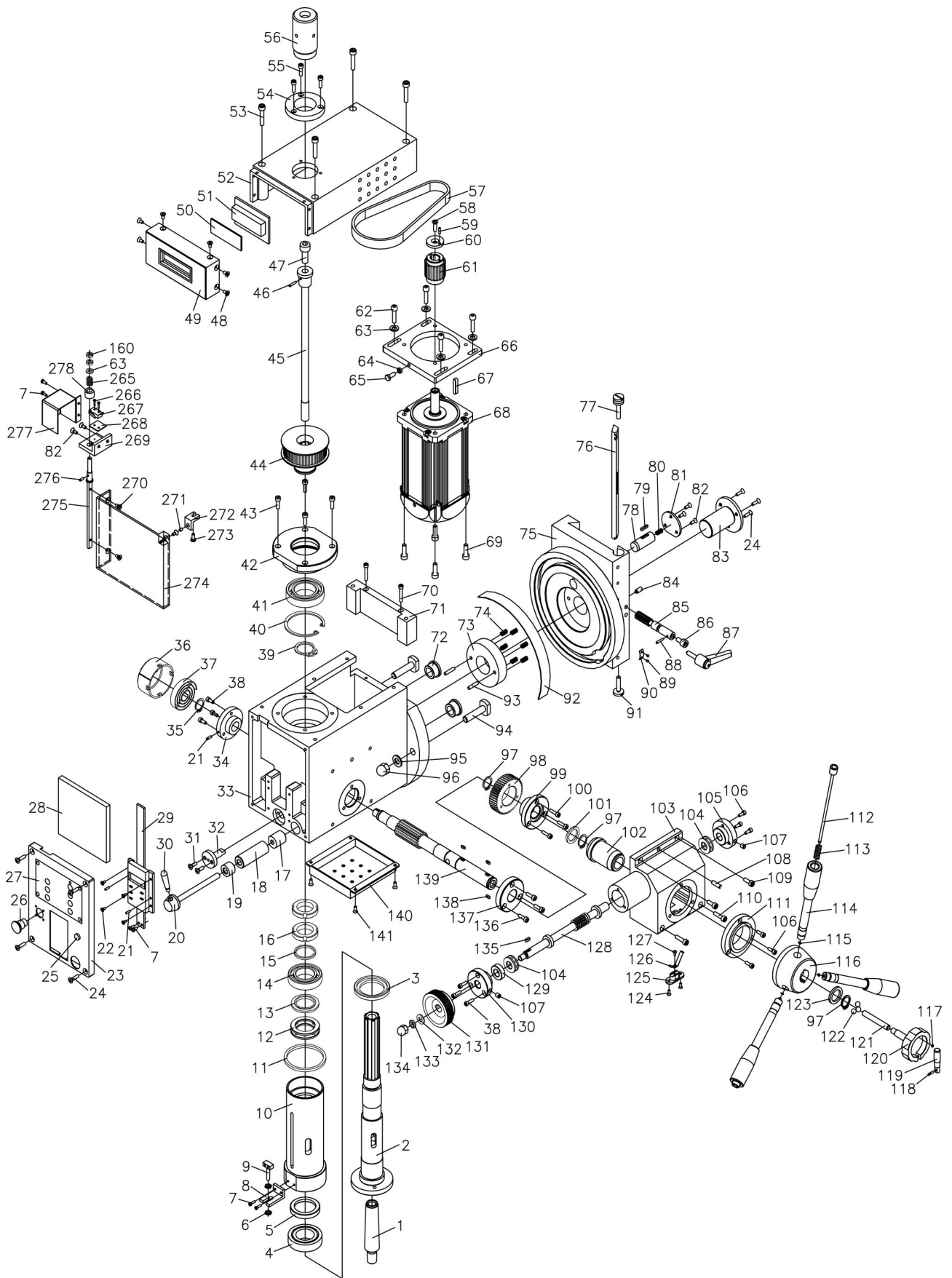
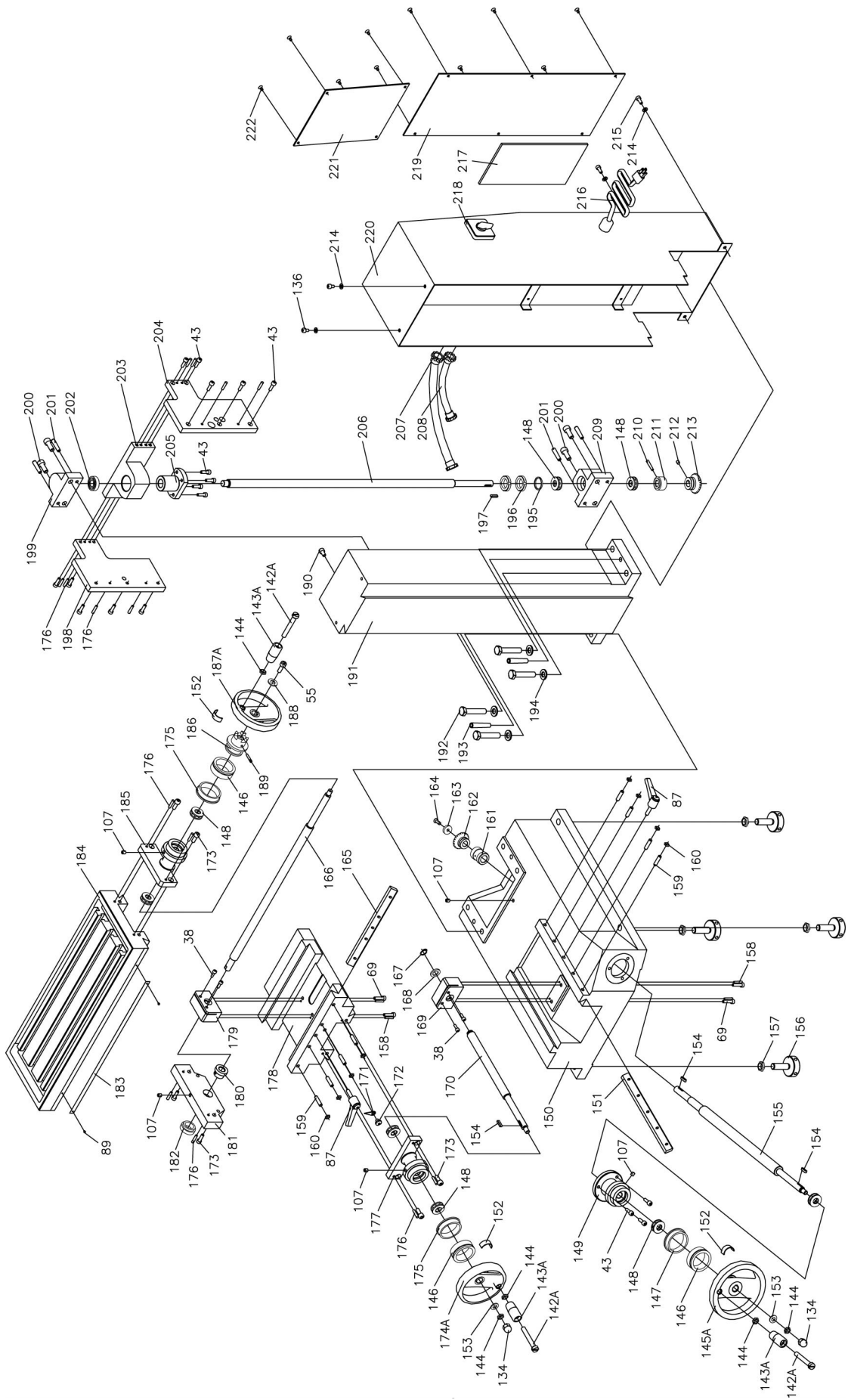


Parts drawing (I)



Parts drawing (II)



Parts list I

No.	Description	Q'ty	No.	Description	Q'ty
1	Taper shank	1	40	Check ring 65	1
2	Spindle	1	41	Bearing 80107	1
3	Under oil seal I	1	42	bearing seat	1
4	Taper bearing 32907	1	43	Screw M5x16	21
5	Under oil swal II	1	44	Synchronization pulley	1
6	Nut M5	2	45	lock bolt	1
7	Screw M3x8	4	46	Taper pin 3x18	1
8	Display fixed bracket	1	47	Screw M10x16	1
9	Square screw	1	48	Screw M4x6	6
10	Spindle sleeve	1	49	Cover	1
11	Sleeve limit pad	1	50	Block piece	1
12	Bearing 8106	1	51	Rotate speed display	1
13	Upper washer II	1	52	Spindle box cover	1
14	Bearing 80106	1	53	Screw M6x40	4
15	Upper washer I	1	54	Dustproof cover I for spindle	1
16	Small round nut M27x1.5	2	55	Screw M4x10	4
17	Spindle brake sleeve II	1	56	Dustproof cover II for spindle	1
18	Spindle brake sleeve I	1	57	Timing belt	1
19	Deep washer	1	58	Screw M6x16	1
20	Lock bolt	1	59	Pin 3x10	1
21	Spring round pin 3x8	3	60	Washer	1
22	Screw M3x8	4	61	Motor timing pulley	1
23	Switch panel	1	62	Screw M6x20	4
24	Screw M4x16	7	63	Washer 6	4
25	Indicator light	1	64	Nut M5	1
26	Emergency stop switch	1	65	Bolt M5x25	1
27	Touch panel	1	66	Motor support plate	1
28	PC Board	1	67	Key 5x25	1
29	Electron display	1	68	Brushless motor	1
30	Small handle	1	69	Screw M5x20	8
31	Screw M3x10	2	70	Screw M4x35	2
32	Spindle sleeve orientation shaft	1	71	Spindle box paneling	1
33	Spindle box	1	72	Orientation steel sleeve	2
34	Left support flange	1	73	Rub circle	1
35	Check ring 16	1	74	Compress spring 1x6x20	6
36	Check spring cover	1	75	Vertical slide	1
37	Clockwork spring	1	76	Tilted wedge	1
38	Screw M4x12	10	77	Adjusting screw	1
39	Check ring 35	1	78	orientation small gear shaft	1

No.	Description	Q'ty	No.	Description	Q'ty
79	Key 4x12	1	119	Assistant small handle	1
80	Compress spring 0.7x4.7x25	1	120	Worm wheel lock handle	1
81	Cover board	1	121	lock small shaft	1
82	Screw M4x10	3	122	Steel ball 8	3
83	Center orientation shaft	1	123	Adjust mat	1
84	Screw M6x8	1	124	Screw M3x6	2
85	Small gear shaft	1	125	Touch fastness fight	1
86	Inlay shaft	1	126	Guide electricity bar	1
87	Small handle assembly	3	127	Screw M3x6	1
88	Taper pin 3x10	1	128	Worm	1
89	Scutcheon rivet	4	129	Worm adjust mat	1
90	indication brand	1	130	Worm left support flange	1
91	Adjust screw	1	131	Worm handwheel	1
92	Staff guage	1	132	Washer 8	1
93	Pin 5x20	2	133	Nut M8	1
94	T screw	2	134	Cup nut M8	3
95	Washer 10	2	135	Key 4x10	1
96	Cap nut M10	2	136	Screw M5x12	5
97	Check ring 20	3	137	Right support flange I	1
98	Tilted gear	1	138	Key 6x8	3
99	Fastness sleeve	1	139	Gear shaft	1
100	Screw M4x16	3	140	Spindle box below cover	1
101	Washer I	1	141	Screw M4x10	4
102	Guide electricity assembly	1	142A	Screw M8x75	3
103	Worm support box	1	143A	Handle sleeve	3
104	Bearing 8101	2	144	Nut M8	5
105	Worm right support flange	1	145A	Handle wheel	1
106	Screw M4x10	6	146	Dial	3
107	Cup oil 6	7	147	Inlay circle	1
108	Screw 6x20	1	148	Bearing 51101	8
109	Screw M5x16	2	149	Support flange	1
110	Screw M5x20	2	150	Base	1
111	Right support flange II	1	151	Cross wedge	1
112	Joy stick	3	152	Reed	3
113	Compress 0.7x6x25	3	153	Washer 8	2
114	Handle assembly	3	154	Key 4x16	3
115	Check ring 4	3	155	Rotate shaft	1
116	Big handle seat	1	156	Adjust bolt	1
117	Small magnetism block	1	157	Nut M12	4
118	Pin 3x14	1	158	Taper pin 3x20	4

Parts list (III)

No.	Description	Q'ty	No.	Description	Q'ty
159	Screw M6x25	8	199	Upper bearing seat	1
160	Nut M6	8	200	Screw M8x20	4
161	Shaft sleeve	1	201	Taper pin 6x30	4
162	Taper gear	1	202	Bearing 80101	1
163	Washer	1	203	Support fight	1
164	Screw M5x14	1	204	Side support plate I	1
165	Portrait wedge	1	205	Verticality leadscrew nut	1
166	Portrait leadscrew	1	206	Verticality leadscrew	1
167	Check ring 12	1	207	Tube connecter	4
168	Washer	1	208	Tube	2
169	Cross leadscrew nut	1	209	Below bearing seat	1
170	Cross leadscrew	1	210	Taper pin 4x26	1
171	Finger	1	211	Limit sleeve	1
172	Screw M6x6	1	212	Set screw M5x8	1
173	Screw M6x16	6	213	Taper gear II	1
174A	Handwheel	1	214	Washer 5	4
175	Inlay circle	2	215	Screw M5x8	2
176	Taper pin 4x20	14	216	Power line	1
177	Bearing Seat	1	217	PC Board	1
178	Saddle	1	218	Power switch	1
179	Portrait leadscrew nut	1	219	Cover II	1
180	left bearing sleeve	1	220	Back cover	1
181	Left support	1	221	Cover I	1
182	Left support stop up	1	222	Screw M4x5	10
183	Staff guage	1	*265	Compress spring 1.4x8.2x24	1
184	Work table	1	*266	Screw M2x10	2
185	Portrait leadscrew bearing seat	1	*267	Micro switch	1
186	Leadscrew clutch	1	*268	Insulation washer 20x27	1
187A	Handwheel	1	*269	Support plate	1
188	Washer	1	*270	Screw M4x8	3
189	Pin 4x28	1	*271	Magnet block	1
190	Screw M6x10	1	*272	Block	1
191	Verticality lead rail	1	*273	Screw M4x10	1
192	Bolt M10x50	4	*274	Protect cover	1
193	Taper pin 6x40	2	*275	Rotate shaft	1
194	Washer 10	4	*276	Round pin 3x8	1
195	Washer	1	*277	Cover	1
196	Small round nut M16x1.5	2	*278	Spacer	1
197	Key 4x20	1	Notice: the parts with "*" means use for Protective		
198	Side support plate II	1	Cover for drill chuck (these parts is optional parts)		