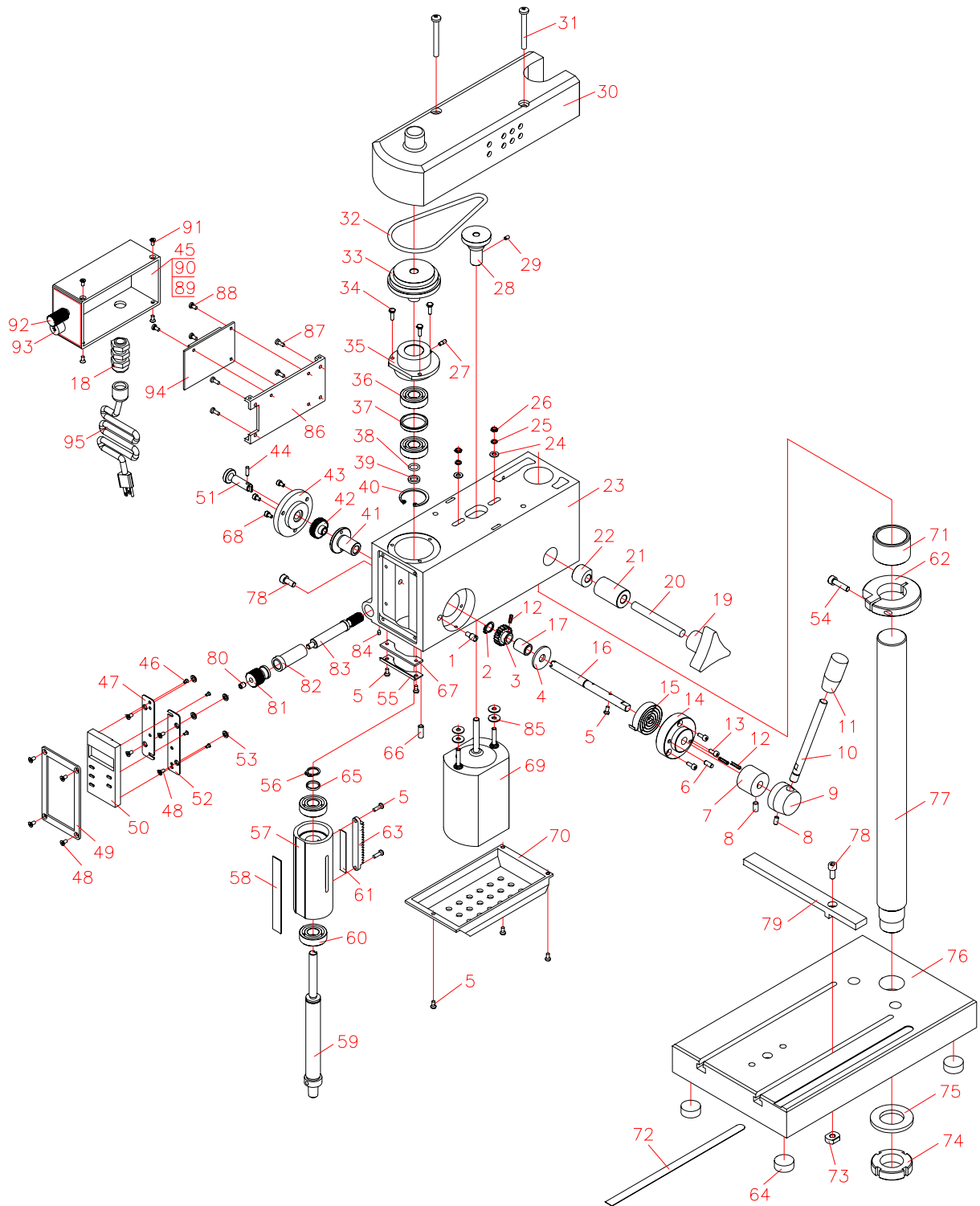


# Part diagram



**Part List ( I )**

<b>P/No.</b>	<b>Description</b>	<b>P/No.</b>	<b>Description</b>
1	Screw M6x14	43	Cover
2	Ring 8	44	Pin 3x10
3	Gear	45	Electrical box (I)
4	Washer	46	Screw M2x6
5	Screw M3x6	47	Connecting plate(left)
6	Pin 4x10	48	Screw M3x6
7	Dial ring	49	Plate
8	Screw M5x8	50	Digital read out
9	Handle seat	51	Connecting shaft
10	Handle shaft	52	Connecting plate (right)
11	Cap of handle shaft	53	Rubber washer
12	Pin 3x12	54	Screw M5x20
13	Screw M3x12	55	Cover for avoiding dust
14	Spring seat	56	Ring 15
15	Wound spring	57	Spindle sleeve
16	Shaft	58	Inductive plate
17	Washer	59	Spindle
18	Fixing ring for cord	60	Bearing 6002-Z
19	Star knob	61	Copper plate
20	Star knob sleeve	62	Fixing ring
21	Fixture block (I)	63	Rack
22	Fixture block (II)	64	Rubber foot
23	Head stock	65	Washer
24	Washer 4	66	Screw M5x14
25	Spring washer 4	67	Felt plate for avoiding dust
26	Nut M4	68	Rubber block for shock absorption
27	Fixing pin	69	Motor
28	Small pulley	70	Bottom cover
29	Screw M4x5	71	Washer
30	Upper cover	72	Ruler
31	Screw M5x45	73	Nut
32	O' belt	74	Nut m24x1.5
33	Big pulley	75	Flat washer 24
34	Screw M4x12	76	Base
35	Bearing seat	77	Column
36	Bearing 6001-Z	78	Screw M5x12
37	Washer	79	Parallel bar
38	Sealing ring	80	Screw M5x6
39	Ring	81	Small wheel
40	Ring 28	82	Spacer
41	Pipe	83	Worm shaft
42	Gear	84	Screw M4x5