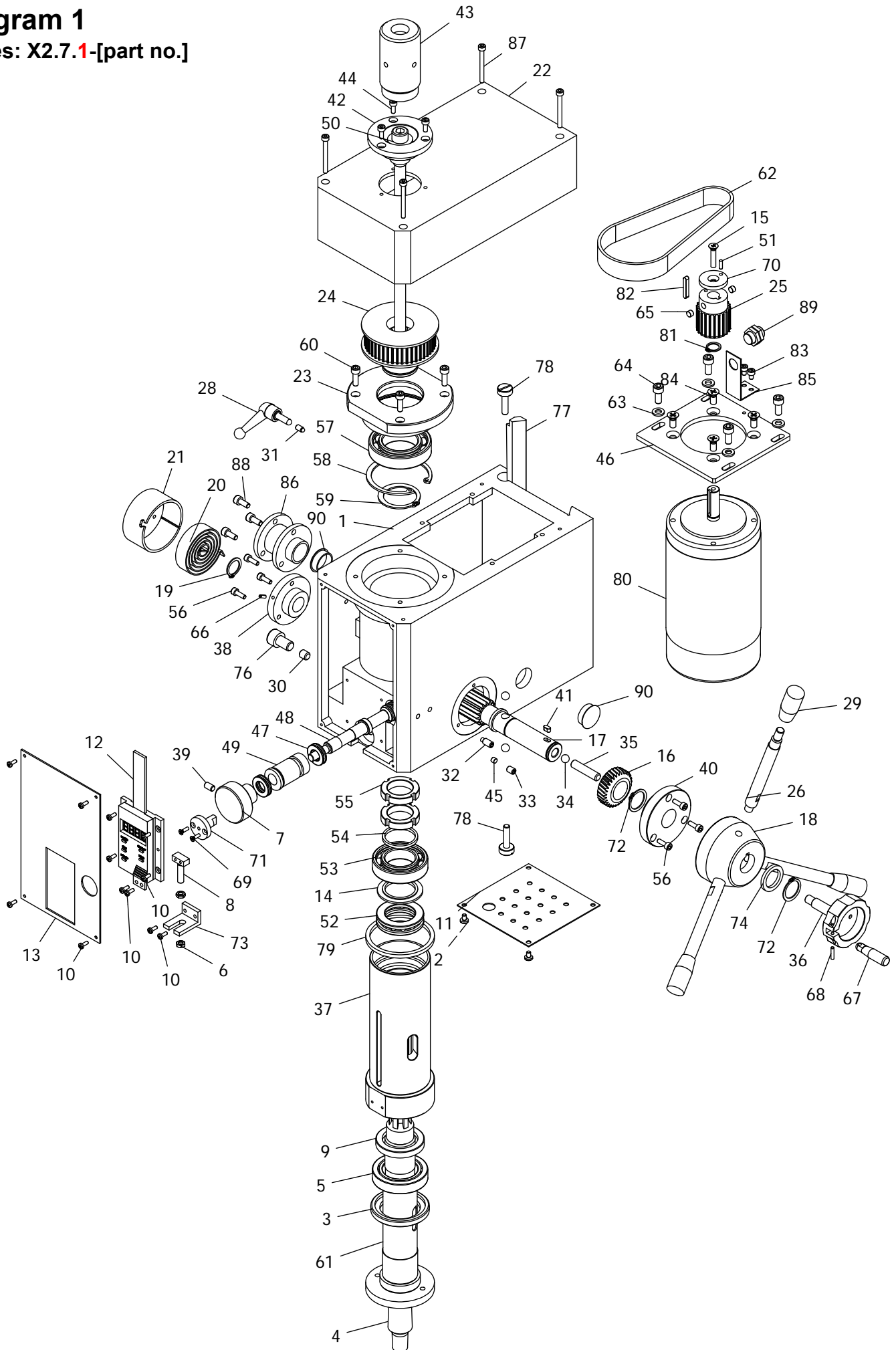


Parts Breakdown For X2.7 Milling Drilling Centre

Diagram 1

Codes: X2.7.1-[part no.]



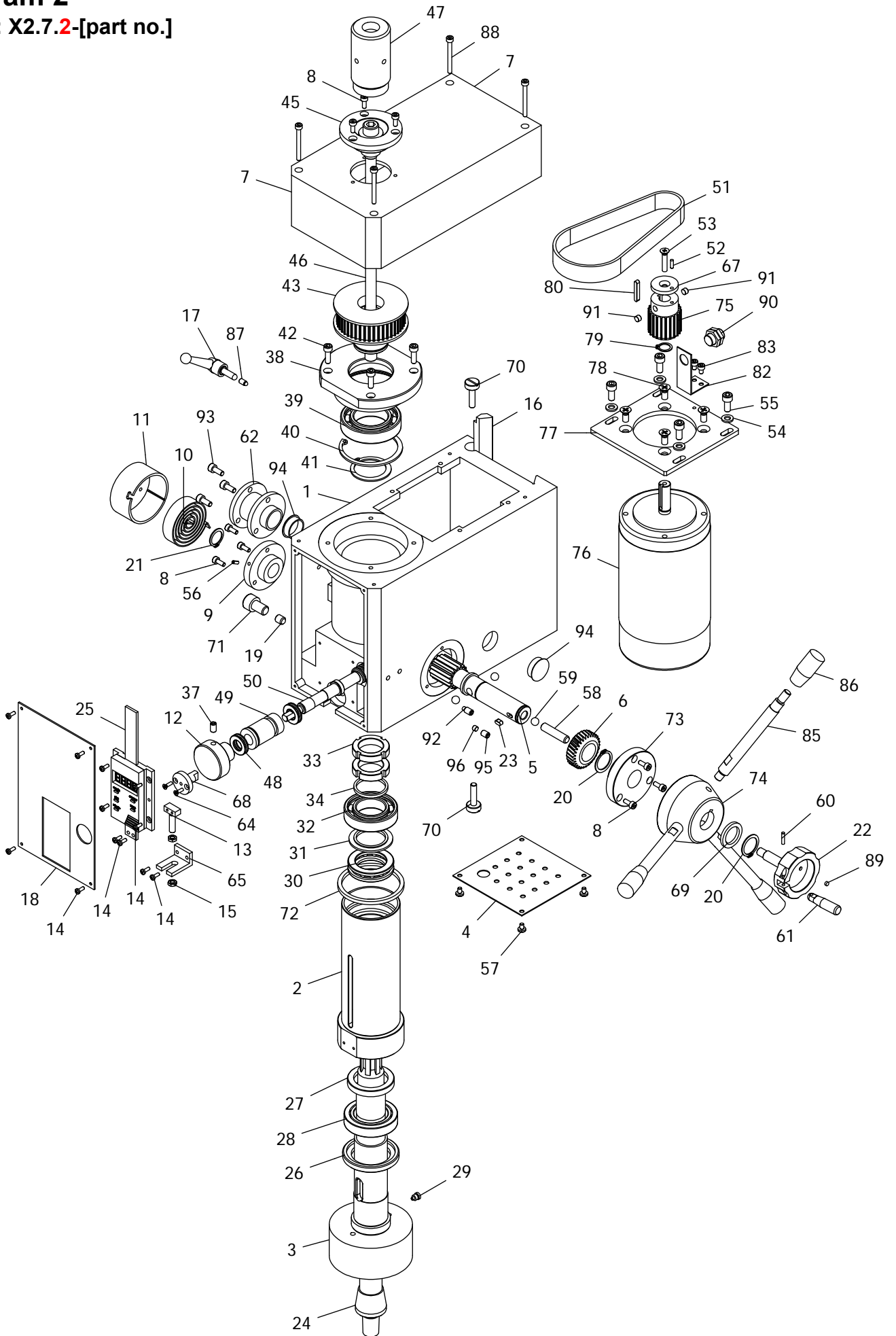
No.	Description	Qty
1-1	Spindle Box	1
1-2	Cross Recessed Small Pan Head Screw M3x8	4
1-3	Spindle Below Oil Seal Ring I	1
1-4	B16 Taper Shank	1
1-5	Taper Roller Bearing 32907	1
1-6	Hexagon Headed Nut M5	2
1-7	Fine Feeding Handwheel	1
1-8	Display Square Screw	1
1-9	Spindle Sleeve Below Oil Seal Ring II	1
1-10	Cross Recessed Small Pan Head Screw Z M3x8	12
1-11	Base Plate	1
1-12	Digital Depth Readout	1
1-13	Head Front Cover	1
1-14	Up Washer II	1
1-15	Cross Recessed Counter Head Screws M5x25	1
1-16	Bevel Gear	1
1-17	Gear Shaft	1
1-18	Handle Seat	1
1-19	Check Ring 16	1
1-20	Clock Spring	1
1-21	Clock Spring Cover	1
1-22	Spindle Box Cover	1
1-23	Bearing Seat	1
1-24	Spindle Timing Pulley	1
1-25	Motor Timing Pulley	1
1-26	Handle Lever	3
1-28	Small Handle Assembly	1
1-29	Long Handle Sleeve	3
1-30	Spindle Sleeve Locking Shaft	1
1-31	Tighten The Top Rod	1
1-32	Slotted Headless Set Screws Round End M6x14	1
1-33	Inner Six Angle Fastening Screws-Flat End M6x8	1
1-34	Ball 8	3
1-35	Locking Small Shaft	1
1-36	Worm Gear Locking Handle	1
1-37	Spindle Sleeve	1
1-38	Shaft Gear Left Support Flange	1
1-39	Inner Six Angle Fastening Screws-Flat End M6x10	1
1-40	Shaft Gear Right Support Flange	1
1-41	Parallel Key 4x8	1
1-42	Spindle Up Dust Guard I	1
1-43	Spindle Up Dust Guard II	1
1-44	Hexagon Round Head Cap Screw M4x10	3
1-45	Eccentric Sleeve Locking Block	1
1-46	Motor Connect Plate	1

No.	Description	Qty
1-47	Thrust Ball Bearing Single 7/70	2
1-48	Worm Shaft	1
1-49	Worm Eccentric Sleeve	1
1-50	Tighten The Top Rod	1
1-51	Round Pin A3x10	1
1-52	Thrust Ball Bearing Single 8106	1
1-53	Deep Groove Ball Bearing 80106	1
1-54	Up Washer	1
1-55	Slotted Round Nut	2
1-56	Hexagon Round Head Cap Screw M4x12	6
1-57	Deep Groove Ball Bearing 80107	1
1-58	Check Ring 62	1
1-59	Check Ring 35	1
1-60	Hexagon Round Head Cap Screw M5x16	4
1-61	Spindle Mt3	1
1-62	Timing Belt	1
1-63	Washer 6	4
1-64	Hexagon Round Head Cap Screw M6x14	4
1-65	Φ6 Magnet Steel	2
1-66	Spring Round Pin 3x8	1
1-67	Assist Small Handle	1
1-68	Round Pin A3x14	1
1-69	Cross Recessed Counter Head Screws H M3x10	2
1-70	Washer	1
1-71	Spindle Sleeve Position Shaft	1
1-72	Check Ring 20	2
1-73	Display Fixed Bracket	1
1-74	Adjust Washer	1
1-76	Hexagon Round Head Cap Screw M10x16	1
1-77	Z-Axis Gib	1
1-78	Gib Screw	2
1-79	Sleeve Limited Washer	1
1-80	Motor 750W/230V DC	1
1-81	Check Ring 12	1
1-82	Parallel Key 4x25	1
1-83	Hexagon Round Head Cap Screw M4x6	2
1-84	Cross Recessed Counter Head Screws H M6x14	4
1-85	Probe Bracket	1
1-86	Attachment Bracket	1
1-87	Hexagon Round Head Cap Screw M4x40	4
1-88	Hexagon Headed Bolt M5x12	3
1-89	Probe Subassembly	1
1-90	Plug	2

Parts Breakdown For X2.7 Milling Drilling Centre

Diagram 2

Codes: X2.7.2-[part no.]



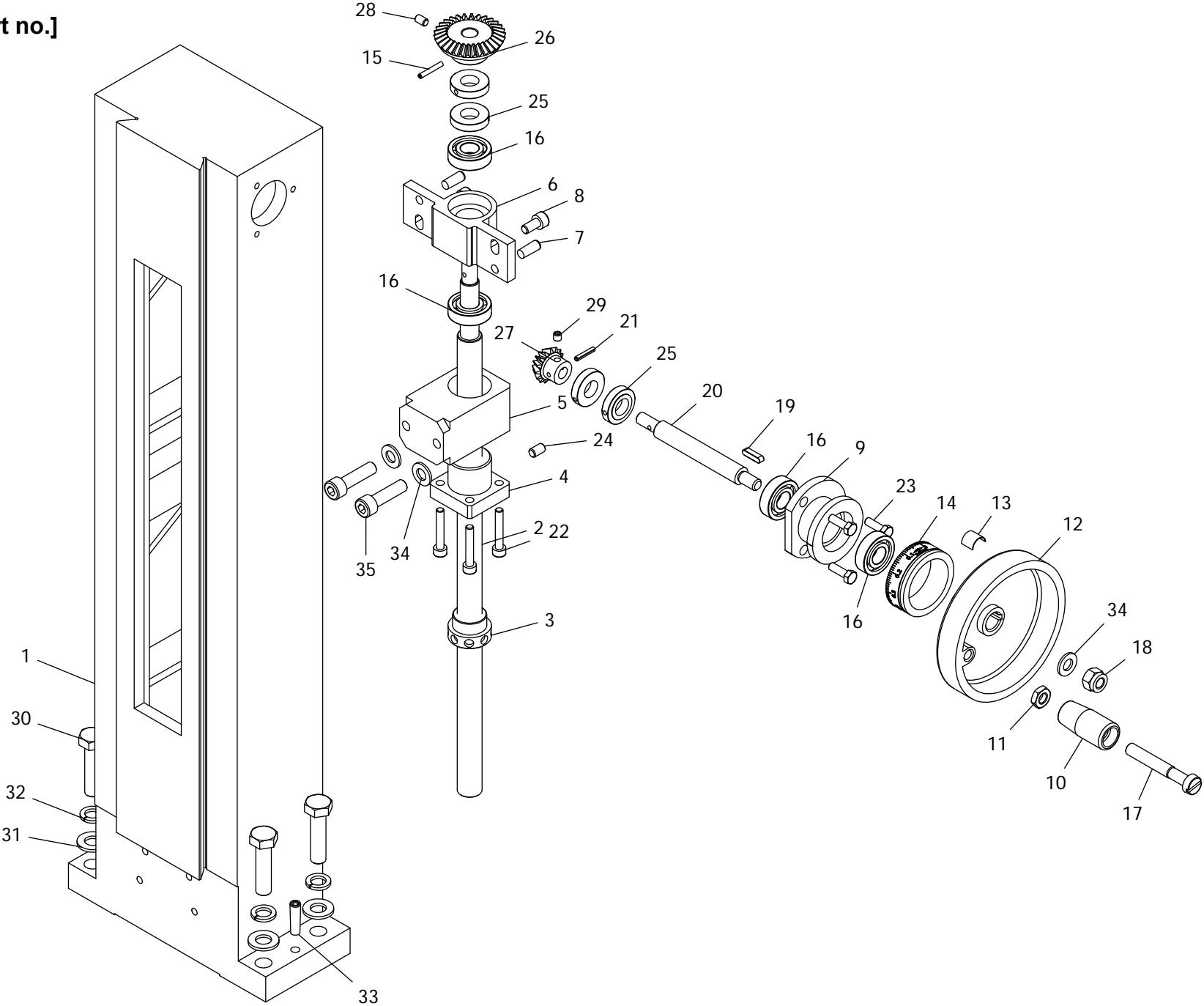
No.	Description	Qty
2-1	Spindle Box	1
2-2	R8 Spindle Sleeve	1
2-3	R8 Spindle	1
2-4	Base Plate	1
2-5	Gear Shaft	1
2-6	Bevel Gear	1
2-7	Spindle Box Cover	1
2-8	Hexagon Socket Head Cap Screw M4x10	9
2-9	Shaft Gear Left Support Flange	1
2-10	Clock Spring	1
2-11	Clock Spring Cover	1
2-12	Fine Feeding Handwheel	1
2-13	Square Screw	1
2-14	Cross Recessed Small Pan Head Screw Z M3x8	12
2-15	Hex Nut M5	2
2-16	Z-Axis Gib	1
2-17	Small Handle Assembly	1
2-18	Head Front Cover	1
2-19	Spindle Sleeve Locking Shaft	1
2-20	Check Ring 20	2
2-21	Check Ring 16	1
2-22	Worm Gear Locking Handle	1
2-23	Parallel Key 4x10	1
2-24	JT6 Taper Shank	1
2-25	The Digital Display Module	1
2-26	Spindle Below Oil Seal Ring I	1
2-27	Spindle Sleeve Below Oil Seal Ring II	1
2-28	Cone Roller Bearing 32907	1
2-29	Shoulder Cylindrical Key	1
2-30	Thrust Ball Bearing 8106	1
2-31	Up Washer II	1
2-32	Deep Groove Ball Bearing 80106	1
2-33	Slotted Round Nut	2
2-34	Up Washer	1
2-37	Inner Six Angle Locking Screws M6x10	1
2-38	Bearing Seat	1
2-39	Deep Groove Ball Bearing 80107	1
2-40	Check Ring 62	1
2-41	Check Ring 35	1
2-42	Hexagon Socket Head Cap Screw M5x16	4
2-43	Spindle Timing Pulley	1
2-45	Spindle Up Dust Guard I	1
2-46	Locking Bolt Assembly	1
2-47	Spindle Up Dust Guard II	1
2-48	Thrust Ball Bearing Single 7/70	2
2-49	Worm Eccentric Sleeve	1
2-50	Worm Shaft	1
2-51	Timing Belt	1
2-52	Round Pin A3x10	1

No.	Description	Qty
2-53	Cross Recessed Counter Head Screws M5x25	1
2-54	Washer 6	4
2-55	Hexagon Socket Head Cap Screw M6x14	4
2-56	Spring Round Pin 3x8	1
2-57	Cross Recessed Small Head Screws M4x6	4
2-58	Locking Small Shaft	1
2-59	Ball 8	3
2-60	Round Pin A3x14	1
2-61	Assist Small Handle	1
2-62	Attachment Bracket	1
2-64	Cross Recessed Counter Head Screws M3x12	2
2-65	Display Fixed Bracket	1
2-67	Washer	1
2-68	Spindle Sleeve Position Shaft	1
2-69	Adjust Washer	1
2-70	Gib Screw	2
2-71	Hexagon Socket Head Cap Screw M10x16	1
2-72	Sleeve Limit Washer	1
2-73	Shaft Gear Right Support Flange	1
2-74	Handle Seat	1
2-75	Motor Timing Pulley	1
2-76	Motor 750W/230V DC	1
2-77	Motor Connect Plate	1
2-78	Cross Recessed Counter Head Screws M6x14	4
2-79	Check Ring 12	1
2-80	Parallel Key 4x25	1
2-82	Probe Bracket	1
2-83	Hexagon Socket Head Cap Screw M4x6	2
2-85	Handle Lever	3
2-86	Long Handle Sleeve	3
2-87	Tighten The Top Rod	1
2-88	Hexagon Socket Head Cap Screw M4x40	4
2-89	ø4X2Magnet	1
2-84	Probe	1
2-90	Probe Sub-assembly	1
2-91	ø6 Magnetic Steel	2
2-92	Set Screw M6x12	1
2-93	Hexagon Headed Bolt M5x12	3
2-94	End Cap	2
2-95	Inner Six Angle Locking Screws M6x8	1
2-96	Eccentric Sleeve Locking Block	1

Parts Breakdown For X2.7 Milling Drilling Center

Diagram 3

Codes: X2.7.3-[part no.]

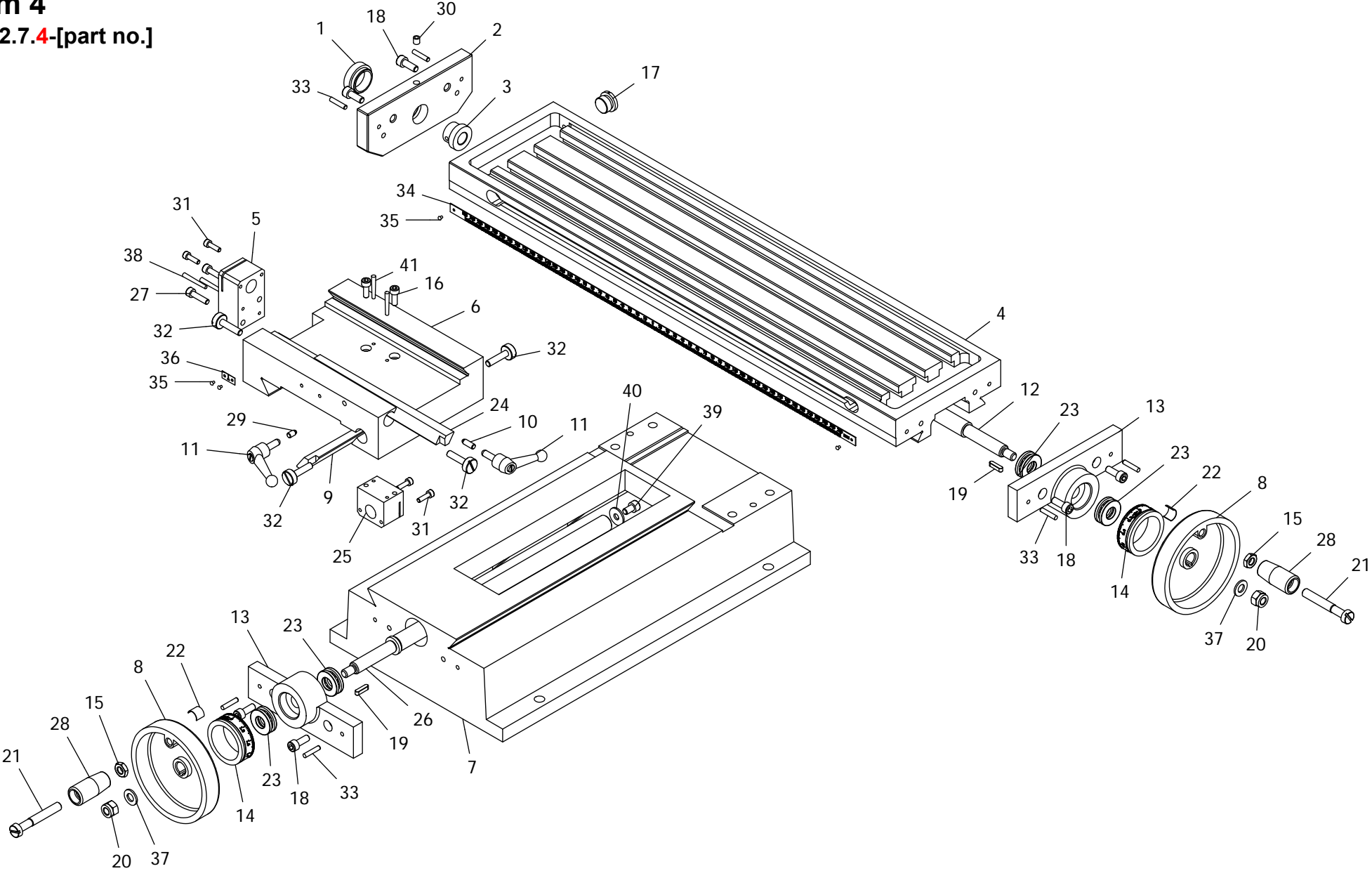


No.	Description	Qty
3-1	Column	1
3-2	Metric Rise And Down Leadscrew	1
3-3	Metric Rise And Down Locking Nut	1
3-4	Metric Rise And Down Leadscrew Nut	1
3-5	Column Nut Support	1
3-6	Leadscrew Support	1
3-7	Taper Pins With Internal Thread 6x16	2
3-8	Hexagon Socket Head Cap Screw M6x12	2
3-9	Rise And Down Support Seat	1
3-10	Handle	1
3-11	Hex Nut M8	1
3-12	Hand Wheel	1
3-13	Dial Friction Spring	1
3-14	Z-Axis Metric Dial	1
3-15	Spring Round Pin 3x20	1
3-16	Deep Groove Ball Bearing 6001	4
3-17	Slotted Large Cheese Head Screws 85x55	1
3-18	Hex Locking Nut M8	1
3-19	Parallel Key 4x16	1
3-20	Rise And Down Shaft	1
3-21	Spring Round Pin 3x16	1
3-22	Hexagon Socket Head Cap Screw M5x20	4
3-23	Hexagon Headed Bolt M5x16	3
3-24	Hex Socket Locking Screw-Flat End M6x10	1
3-25	Locking Nut	4
3-26	Big Bevel Gear Wheel	1
3-27	Small Bevel Gear Wheel	1
3-28	Hex Socket Locking Screws-Cone End M5x8	1
3-29	Hex Socket Locking Screws-Cone End M5x5	1
3-30	Hexagon Headed Bolt M10x40	4
3-31	Washer 10	4
3-32	Spring Washer 10	4
3-33	Taper Pins With Internal Thread 6x24	2
3-34	Washer 8	1
3-35	Hexagon Socket Head Cap Screw M8x30	2

Parts Breakdown For X2.7 Milling Drilling Centre

Diagram 4

Codes: X2.7.4-[part no.]

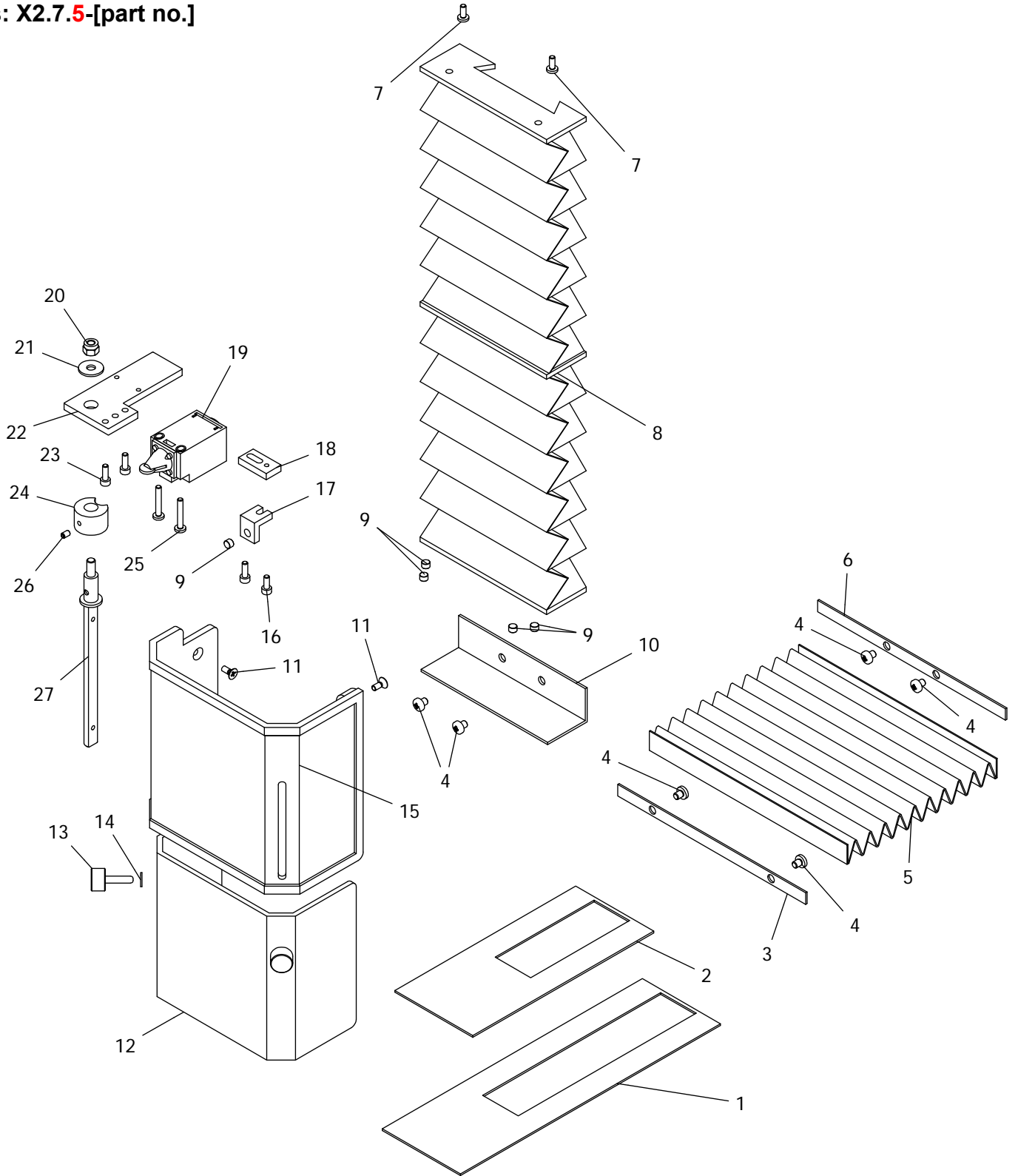


No.	Description	Qty
4-1	Left Support Bearing Cover	1
4-2	Left Cover	1
4-3	Longitudinal Leadscrew Rod Bracket Left Sleeve	1
4-4	Work Table	1
X2.7L.4-4	Long Worktable	1
4-5	X-Axis Leadscrew Nut - Metric	1
4-6	Saddle	1
4-7	Base	1
4-8	Hand Wheel	2
4-9	Cross Bevel Wedge	1
X2.7L.4-9	Cross Bevel Wedge For X2.7L	1
4-10	Longitudinal Wedge Locking Crown Bar	1
4-11	Small Handle Assembly	2
4-12	X-Axis Leadscrew - Metric	1
X2.7L.4-12	X-Axis Long Leadscrew - Metric (X2.7L)	1
4-13	Longitudinal\Cross Leadscrew Bearing Seat	2
4-14	X/Y-Axis Metric Dial	2
4-15	Hexagon Nut M8	2
4-16	Hexagon Socket Head Cap Screw M5x14	2
4-17	Plug	1
4-18	Hexagon Socket Head Cap Screw M6x16	6
4-19	Parallel Key 4x16	2
4-20	Hexagon Locking Nut M8	2
4-21	Slotted Large Cheese Head Screws 85x55	2
4-22	Dial Friction Spring	2
4-23	Thrust Ball Bearing 8101	4
4-24	Longitudinal Bevel Wedge	1
4-25	Y-Axis Leadscrew Nut - Metric	1
4-26	Y-Axis Leadscrew - Metric	1
X2.7L.4-26	Y-Axis Short Leadscrew - Metric (X2.7L)	1
4-27	Hexagon Socket Head Cap Screw M5x20	2
4-28	Handle Sleeve	2
4-29	Tighten The Top Rod	1
4-30	Pressure With Pressure Column Oil Cup 6	1
4-31	Hexagon Socket Head Cap Screw M4x14	4
4-32	Gib Screw	4
4-33	Round Pin A4x20	6
4-34	Scale Height	1
4-35	Label Rivet 2x3	4
4-36	Zero Label	1
4-37	Washer 8	2
4-38	Taper Pin A3x30	2
4-39	Hexagon Socket Head Cap Screw M6x10	1
4-40	Washer 6	1
4-41	Taper Pin B3x26	2

Parts Breakdown For X2.7 Milling Drilling Centre

Diagram 5

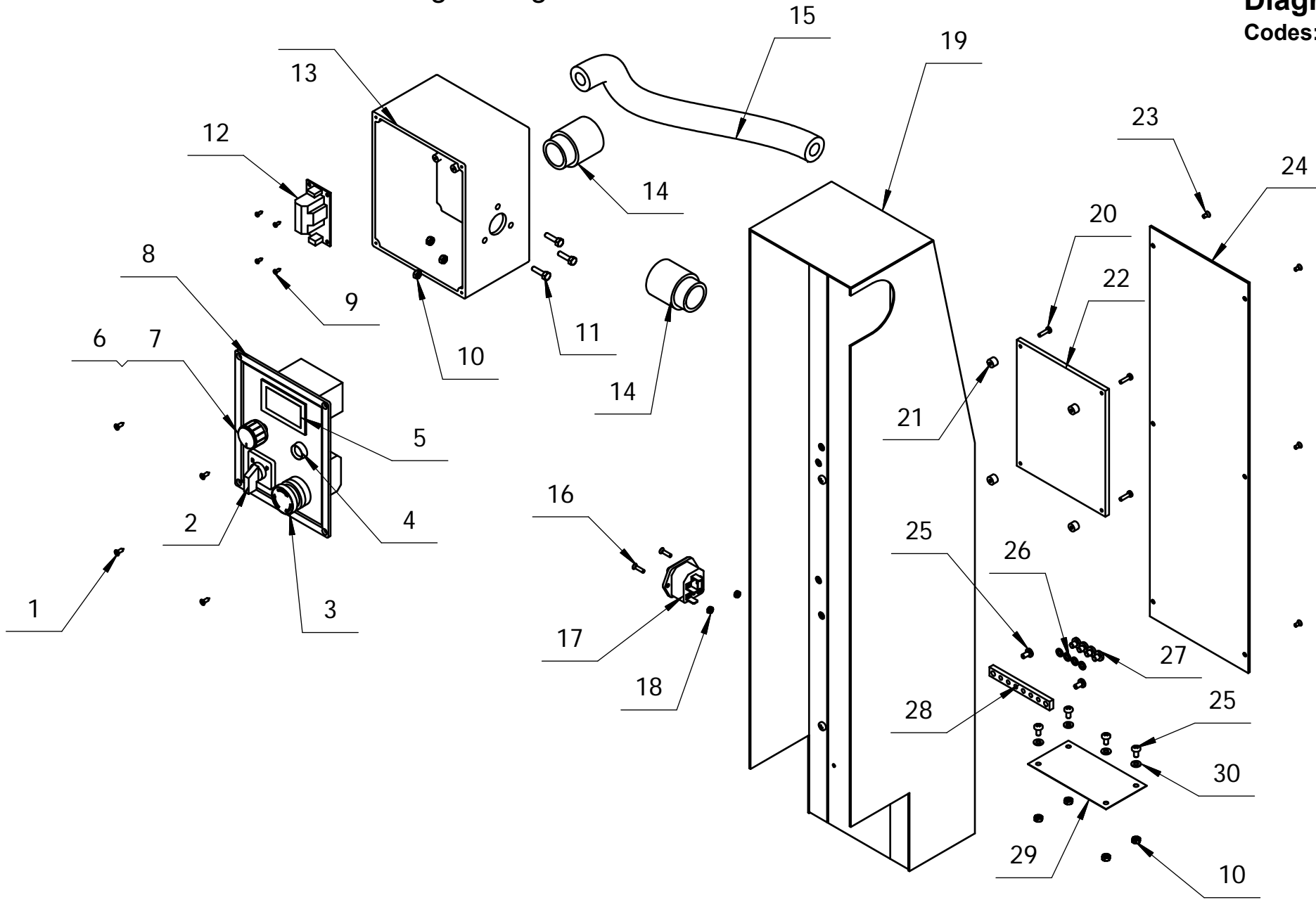
Codes: X2.7.5-[part no.]



No.	Description	Qty
5-1	Splash Guard I	1
5-2	Splash Guard II	1
5-3	Filler Strip	1
5-4	Cross Recessed Counter Head Screws M5x6	6
5-5	Dust Guard	1
5-6	Dead Plate	1
5-7	Cross Recessed Counter Head Screws M4x10	2
5-8	Concertina Bellows - Laminated Fabric	1
5-9	ø6 Magnet Steel	5
5-10	Shield Baffle	1
5-11	Cross Recessed Counter Head Screws M4x10	3
5-12	The Inner Shield	1
5-13	Knurled Guard Screw M5X20	2
5-14	Washer 5	2
5-15	Outer Chuck Guard	1
5-16	Hexagon Socket Head Cap Screw M4x10	1
5-17	Block	1
5-18	Connecting Plate	1
5-19	Chuck Guard Limit Switch	1
5-20	Hexagon Locking Nut M6	1
5-21	Washer 6	1
5-22	Support Plate	1
5-23	Hexagon Socket Head Cap Screw M4x12	3
5-24	Spacer Bush	1
5-25	Cross Recessed Counter Head Screws M4x25	2
5-26	Inner Six Angle Locking Screw-Cone End Metric M4x6	1
5-27	Chuck Guard Spindle	1

Parts Breakdown For X2.7 Milling Drilling Centre

Diagram 6
Codes: X2.7.6-[part no.]



No.	Description	Qty
6-1	Tapping Screw	4
6-2	Forward / Reverse Switch	1
6-3	Emergency Stop Switch	1
6-4	Amber Fault Indicator	1
6-5	Spindle Speed Display	1
6-6	Potentiometer	1
6-7	Speed Control Knob - Black Anodised 23Mm	1
6-8	Control Box Cover	1
6-9	Tapping Screw	4
6-10	Hexagon Headed Nut M4	7
6-11	Hexagon Headed Bolt M4x16	3
6-12	Power Panel	1
6-13	Control Box	1
6-14	Tube Connector	2
6-15	Tube	1
6-16	Cross Recessed Counter Head Screws M3x12	2
6-17	Power Socket	1
6-18	Hexagon Headed Nut M3	2
6-19	Back Cover	1
6-20	Cross Recessed Small Pan Head Screw M3x12	4
6-21	Foot-Pad	4
6-22	Main Control Board	1
6-23	Back Cover	1
6-24	Cross Recessed Small Pan Head Screw M4x8	6
6-25	Spring Spacer	4
6-26	Cross Recessed Small Pan Head Screw M5x6	4
6-27	Grounding Bar	1
6-28	Blow Dust Gauze	1
6-29	Washer	4
6-30	Cross Recessed Small Pan Head Screw M3x6	17
6-31	Cover	1
6-33	Bluetooth Generator Control Board	1