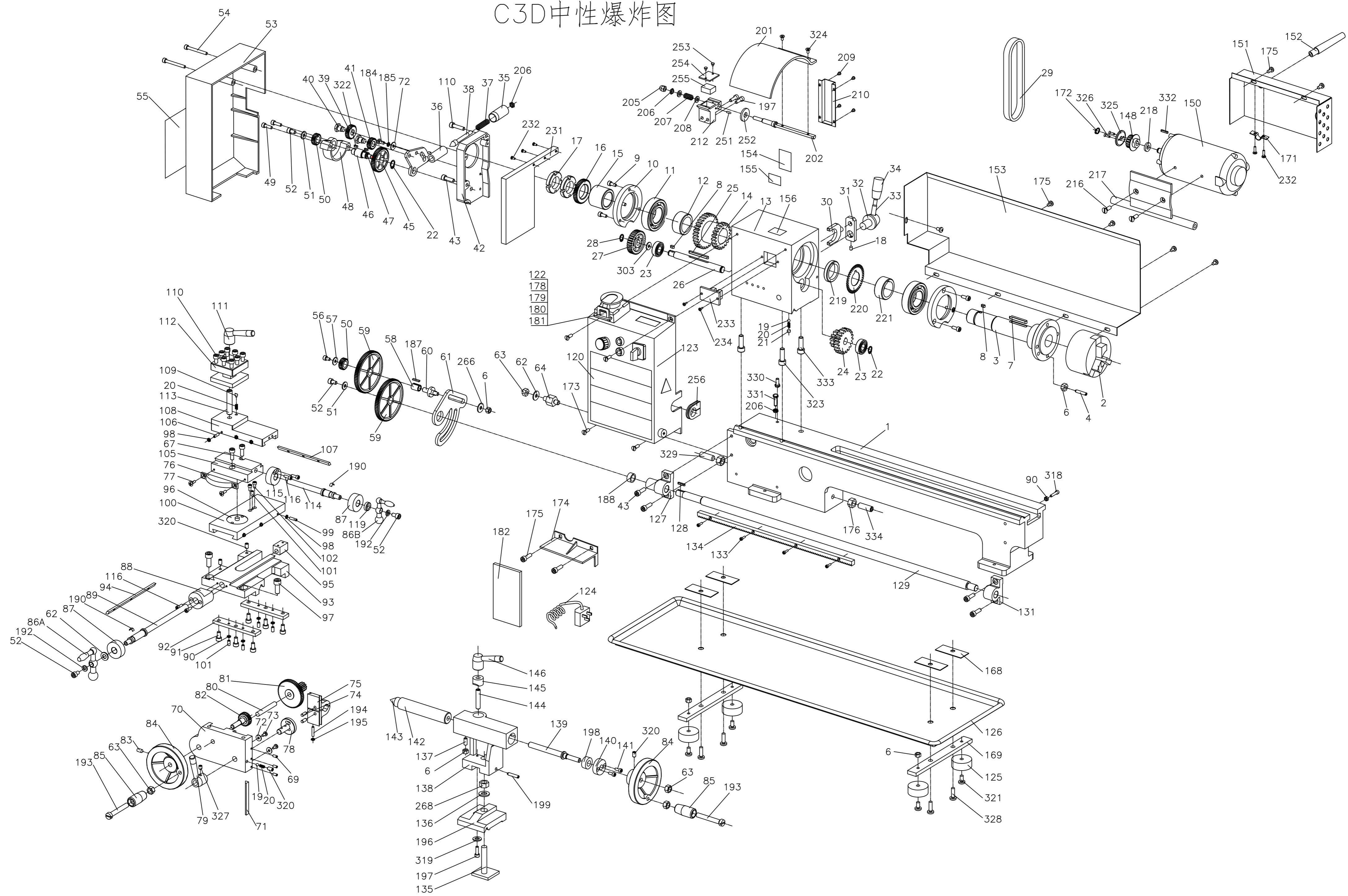


C3D中性爆炸图



No.	Description	QTY
1	Bed way	1
2	Chuck	1
3	Spindle	1
4	Screw M6*25	3
6	Nut M6	9
7	Key 5*40	1
8	Key 4*8	2
9	Screw M5*12	6
10	Cover	2
11	Ball bearing	2
12	Spacer	1
13	Headstock casting	1
14	H/L gear 21T/29T	1
15	Spacer	1
16	Spur gear 45T	1
17	Nut M27*1.5	2
18	Set screw M5*8	1
19	Steel ball 5	2
20	Comperssion spring	3
21	Set screw M6*8	1
22	Retaining ring 12	3
23	Ball bearing 6201Z	2
24	H/L gear 12T/20T	1
25	Parallel key 4*45	1
26	H/L gear shaft	1
27	Pulley	1
28	Retaining ring 10	1
29	Timing belt L136	1
30	Shifting fork	1
31	Shifting arm	1
32	Handle shaft	1
33	Double End Stub	1
34	Long Handle Slipcover	1
35	Handle Slipcover	1
36	Lever Quadrant	1
37	Spring	1
38	Indicator	1
39	Pinion 25T	1
40	Support screw	2
41	pinion 20T	1
42	fixed cover	1
43	screw M6*20	5
45	Gear 45T	1
46	Shaft	1
47	Parallel key 3*8	1

48	mount	1
49	Screw M5*18	2
50	Gearwheel Z20	2
51	Washer M6	2
52	Screw M6*8	4
53	Cover	1
54	Screw M5*45	2
55	thread cutting chart	1
56	Screw M5*8	1
57	Washer m4	1
58	Bush Key	1
59	Gearwheel Z80	2
60	Shaft	1
61	Support plate	1
62	Washer 8	2
63	Nut M8	4
64	Shaft	1
67	Screw M6*16	2
69	Set screw M4*10	3
70	Apron	1
71	Gib strip	1
72	Washer	3
73	Screw M4*8	2
74	Shaft	2
75	Half nut base	2
76	Augle block	1
77	Screw M4*10	2
78	Groove cam	1
79	Handle Base	1
80	Shaft	1
81	Gear 11T/54T	1
82	Gear 24T	1
83	Screw M6*10	1
84	Wheel	2
85	Handle	2
86A	Three Ball Handle(L)	1
86B	Three Ball Handle	1
87	Dial	2
88	Bracket	1
89	Feeding screw	1
90	Nut M5	5
91	Screw M6*12	6
92	Slide plate	2
93	Saddle	1
94	Gib strip	1
95	Feeding nut imperial	1

96	Swivel disk	1
97	Screw M8*20	2
98	Nut M4	6
99	Screw M4*16	3
100	Cross slide	1
101	Screw m5*10	5
102	Screw M4*8	2
105	Compound rest(B)	1
106	Screw M4*14	3
107	Gib strip	1
108	Compound Slide	1
109	Positioning Pin	1
110	Screw M6*25	9
111	Clamping lever	1
112	Tool rest	1
113	Stud M10*65	1
114	Cross feed screw	1
115	Bracket	1
116	Screw M4*12	4
119	Nut M18	1
120	Model lable	1
122	Switch label	1
123	Control box	1
124	Plug w/cord	1
125	Rubber foot	4
126	Chip tray	1
127	Bracket	1
128	key M3*16	1
129	Lead screw	1
131	Bracket	1
133	Screw M3*10	4
134	Rack	1
135	Clamp plate	1
136	Washer M10	1
137	Screw M5*16	1
138	Tailstock casting	1
139	Tailstock screw	1
140	Bracket	1
141	Screw M4*10	2
142	Tailstock quill	1
143	Center	1
144	Screw	1
145	Stop Stock	1
146	Handle Base	1
148	Pulley	1
150	Motor	1

151	Cover	1
152	Power Cord Jacket	1
153	Dust Cover	1
154	H/L label	1
155	H/L label	1
156	Warning Label	1
157	Gearwheel 30T	1
158	Gearwheel 35T	1
159	Gearwheel 40T	2
160	Gearwheel 45T	1
161	Gearwheel 50T	1
162	Gearwheel 55T	1
163	Gearwheel 57T	1
164	Gearwheel 60T	1
165	Gearwheel 65T	1
166	External jaws(set)	1
167	3-jaw chuck key	1
169	Support plate	2
171	Clamp block	1
172	Check ring 8	1
173	Screw M5*10	4
174	Protector	1
175	Screw M5*10	9
176	Nut M6	2
178	Emergency stop	1
179	fuse	1
180	Variable speed control knob	1
181	Forward/off/reverse switch	1
182	P.C.board	1
184	Screw M5*10	1
185	Spring washer	1
187	Key	1
188	Spacer	1
190	Spring	2
192	Washer 8	2
193	Spring washer 6	2
194	Screw M8*55	1
195	Screw M4*38	1
196	tailstock plate	1
197	Screw M5*16	3
198	Flange	1
199	Screw M5*25	1
201	Chuck Guard	1
202	Chuck Guard Spindle	1
205	Hinge	1
206	Nut M6	3

207	Nut M6	1
208	Spring	2
209	Screw M3*4	4
210	Cover	1
212	Fix base	1
216	screw M6*8	2
217	Motor fixed plate	1
218	washer 6	1
219	Spacer	1
220	light beam	1
221	Spacer	1
231	Support plate	1
232	Screw M4*6	5
233	Photoelectricity switch	1
234	Screw M3*8	2
251	Round pin	1
253	Screw ST2.9*4.5	3
254	Cover	1
255	Micro switch	1
256	Dustproof cover	1
266	Washer	1
268	Screw	1

303	Washer	1
318	Screw	1
319	Washer	1
320	Screw	4
321	Screw	4
322	Key	1
323	Screw	2
324	Screw	2
325	Flange	1
326	Screw	2
327	Screw	1
328	Screw	4
329	Screw	1
330	Bolt	1
331	Bolt	1
332	Key	1
333	Bolt	1
334	Screw	1