

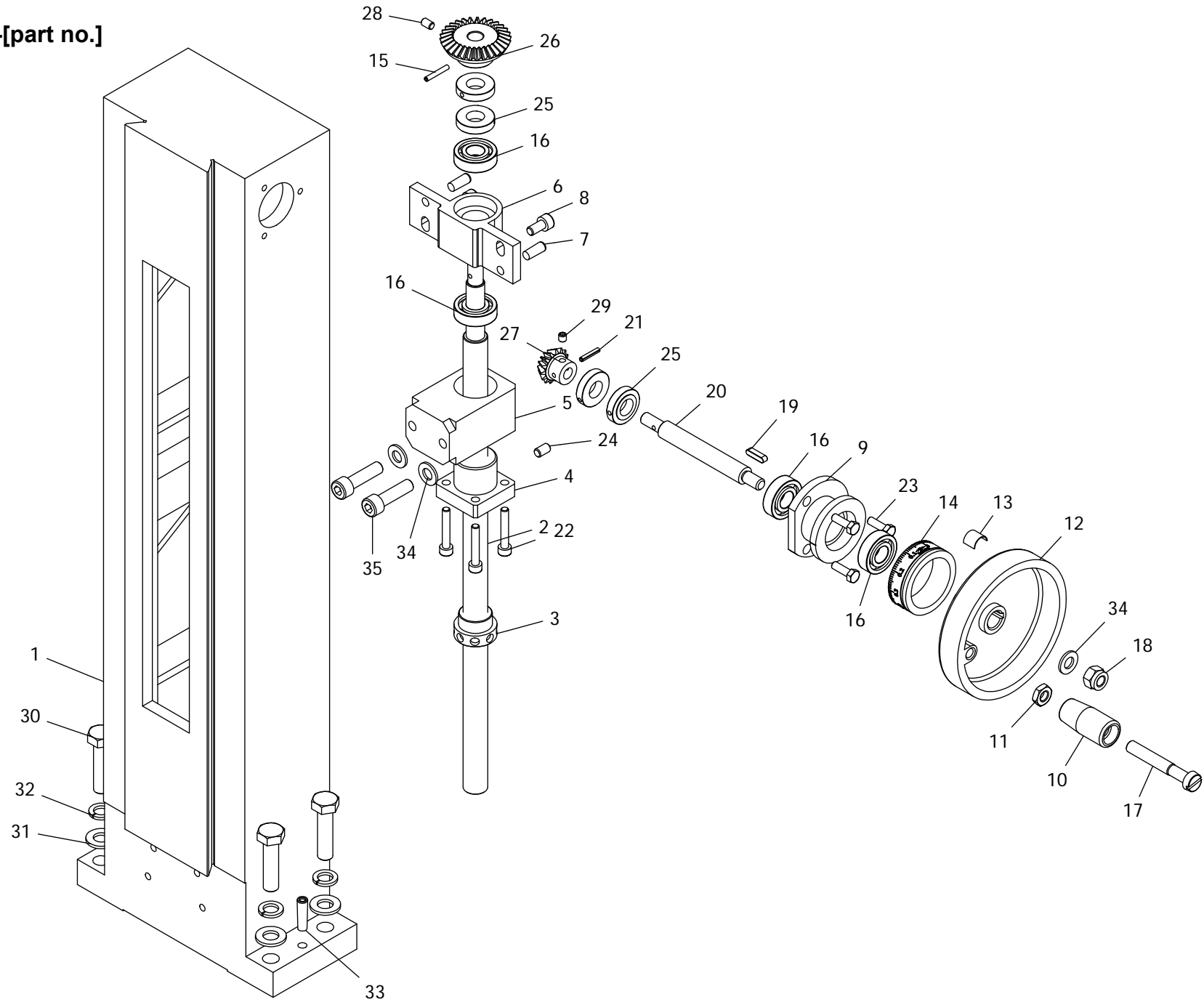
No.	Description	Qty.
1-1	Spindle Box	1
1-2	Spindle Box Cover	1
1-3	Gear Shaft	1
1-4	Worm Shaft	1
1-5	Worm Eccentric Sleeve	1
1-6	Head Front Cover	1
1-7-MT3	MT3 Spindle	1
1-7-R8	R8 Spindle	1
1-8-MT3	MT3 Spindle Sleeve	1
1-8-R8	R8 Spindle Sleeve	1
1-9	Cone Roller Bearing 32907	1
1-10	Deep Groove Ball Bearing 80106	1
1-11	Thrust Ball Bearing 8106	1
1-12	Deep Groove Ball Bearing 80107	1
1-13	Thrust Ball Bearing 12x22x5	2
1-14	Spindle Below Oil Seal Ring I	1
1-15	Spindle Sleeve Below Oil Seal Ring II	1
1-16	Up Washer II	1
1-17	Up Washer	1
1-18	Sleeve Limit Washer	1
1-19	Bearing Seat	1
1-20	Check Ring 62	1
1-21	Check Ring 35	1
1-22	Slotted Round Nut M27x1.5	2
1-23	Spindle Timing Pulley	1
1-24	Hex Socket Cap Screw M5x16	4
1-25	Handle Seat	1
1-26	Shaft Gear Right Support Flange	1
1-27	Adjust Washer	1
1-28	Bevel Gear	1
1-29	Shaft Gear Left Support Flange	1
1-30	Clock Spring Cover	1
1-31	Clock Spring	1
1-32	Hex Socket Cap Screw M4x12	6
1-33	Flat Key 4x8	1
1-34	Check Ring 20	2
1-35	Spring Pin 3x8	1
1-36	Fine Feed Handwheel	1
1-37	Hex Socket Set Screw M6x6	1
1-38	Flat Key 4x25	1
1-39	Hex Socket Cap Screw M6x14	4
1-40	Washer 6	4
1-41	Spring Washer 6	4
1-42	Spring Pin 3x10	1
1-43	Timing Belt 385 (Z77)	1
1-44	Spindle Up Dust Guard I	1
1-45	Spindle Up Dust Guard II	1
1-46	Hex Socket Cap Screw M4x10	3
1-47	Cross Recessed Pan Head Screw M3x8	14

No.	Description	Qty.
1-48	Display Assembly Gd300-165	1
1-49	Square Screw	1
1-50	Hex Nut M5	2
1-51	Hex Socket Cap Screw M4x40	4
1-52	Slotted Headless Setting Screw M6x14	1
1-53	Hex Socket Set Screw M6x8	1
1-54	Eccentric Sleeve Locking Block	1
1-55	Spindle Sleeve Lock Shaft	1
1-56	Hex Socket Cap Screw M10x20	1
1-57	Connect Support	1
1-58	Hex Socket Cap Screw M5x12	7
1-59	Bevel Wedge	1
1-60	Wedge Screw	2
1-61	Top Locking Rod	1
1-62	Small Handle Assembly	1
1-63	Lock Shaft	1
1-64	Small Handle	2
1-65	Ball 8	3
1-66	Display Assembly Support	1
1-67	Register Pin	1
1-68	Cross Recessed Sunk Screw M3x10	5
1-69	Base Plate	1
1-70	Cross Recessed Pan Head Screw M4x6	2
1-71	Lock Top Shaft	1
1-72-B16	B16 Taper Shank	1
1-72-JT6	JT6 Taper Shank	1
1-73	Drawbar 3/8" Whit	
1-73	Drawbar 7/16 UNF	
1-73	Drawbar M12	
1-74	Check Ring 16	1
1-75	Conductive Ring Assembly	1
1-76	Cross Recessed Pan Head Screw M3x4	1
1-77	Control Handle Assembly	3
1-78	F/R Control Pole Assembly	3
1-79	Compression Spring 0.8x6x25	3
1-80	Spring Washer 3	3
1-81	Motor Support Plate	1
1-82	Motor Timing Pulley	1
1-83	Washer	1
1-84	Cross Recessed Sunk Screw M5x20	1
1-85	Key (For R8 Spindle Only)	1

Parts Breakdown For SX2.7N Milling Drilling Centre

Diagram 2

Codes: SX2.7N.2-[part no.]

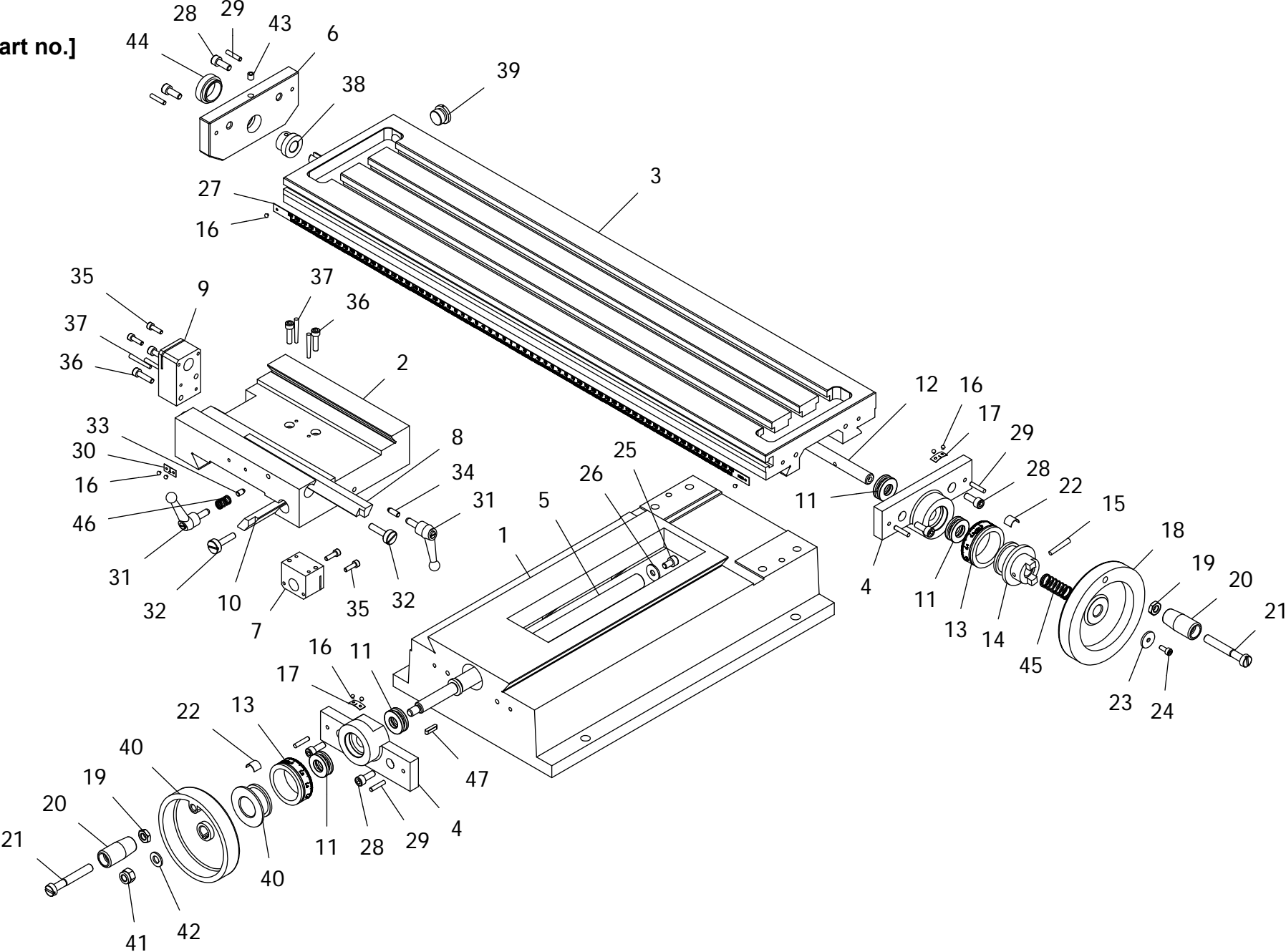


No.	Description	Qty.
2-1	Column	1
2-2-MET	Metric Lifting And Down Leadscrew	1
2-2-IMP	Imperial Lifting And Down Leadscrew	1
2-3-MET	Metric Lifting And Down Locking Nut	1
2-3-IMP	Imperial Lifting And Down Locking Nut	1
2-4-MET	Metric Lifting And Down Leadscrew Nut	1
2-4-IMP	Imperial Lifting And Down Leadscrew Nut	1
2-5	Column Nut Bracket	1
2-6	Leadscrew Bracket	1
2-7	Taper Pin 6x16	2
2-8	Hex Socket Cap Screw M6x12	2
2-9	Lifting And Down Bracket Seat	1
2-10	Handle	1
2-11	Hex Nut M8	1
2-12	Handle Wheel	1
2-13	Spring Piece	1
2-14-MET	Metric Rise And Down Scale Dial	1
2-14-IMP	Inch Rise And Down Scale Dial	1
2-15	Spring Round Pin 3x20	1
2-16	Deep Groove Ball Bearing 6001	4
2-17	Slotted Large Cap Screw 8x55	1
2-18	Hex Locking Nut M8	1
2-19	Parallet Key 4x16	1
2-20	Rise And Down Shaft	1
2-21	Spring Round Pin 3x16	1
2-22	Hex Socket Cap Screw M5x20	4
2-23	Hex Bolt M5x16	3
2-24	Hex Socket Set Screw-Flast End M6x10	1
2-25	Locking Nut	4
2-26	Big Bevel Gear Wheel	1
2-27	Small Bevel Gear Wheel	1
2-28	Hex Socket Set Screw Cone Point- M5x8	1
2-29	Hex Socket Set Screw Cone Point M5x5	1
2-30	Hex Bolt M10x40	4
2-31	Washer 10	4
2-32	Spring Washer 10	4
2-33	Taper Pin 6x24	2
2-34	Washer 8	1
2-35	Hex Socket Cap Screw M8x30	2

Parts Breakdown For SX2.7N Milling Drilling Centre

Diagram 3

Codes: SX2.7N.3-[part no.]



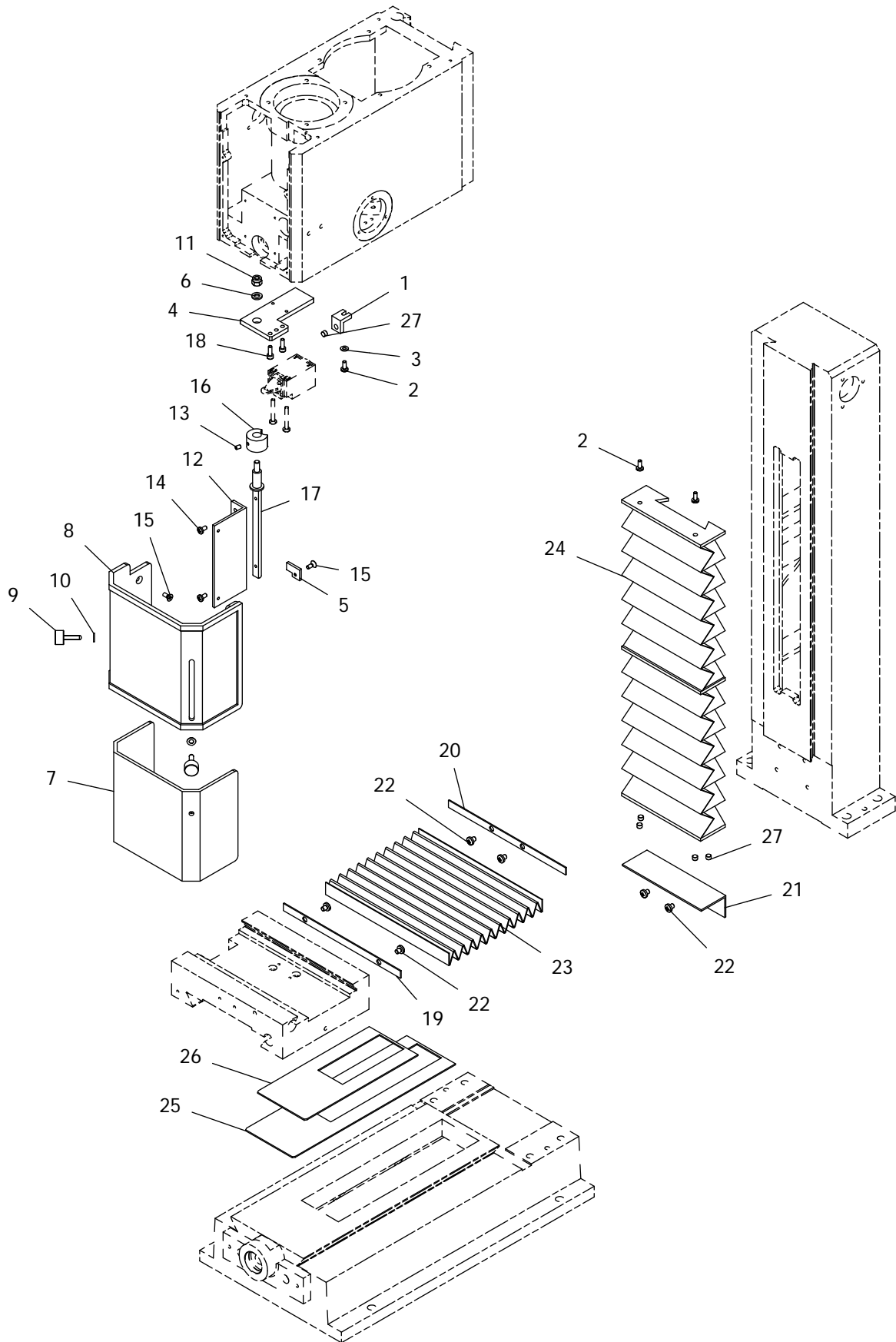
No.	Description	Qty.
SX2.7LN.3-1(L)	Base(Large Table)	1
3-1(S)	Base(Small Table)	1
SX2.7LN.3-2(L)	Saddle(Large Table)	1
3-2(S)	Saddle(Small Table)	1
SX2.7LN.3-3(L)	Work Table(Large Table)	1
3-3(S)	Work Table(Small Table)	1
3-4	Leadscrew Bearing Seat	2
SX2.7LN.3-5(L)-MET	Metric Cross Leadscrew(Large Table)	1
SX2.7LN.3-5(L)-IMP	Imperial Cross Leadscrew(Large Table)	1
3-5(S)-MET	Metric Cross Leadscrew(Small Table)	1
3-5(S)-IMP	Imperial Cross Leadscrew(Small Table)	1
3-6	Left End Cover	1
3-7-MET	Metric Cross Leadscrew Nut	1
3-7-IMP	Inch Cross Leadscrew Nut	1
3-8	Longitudinal Bevel Wedge	1
3-9-MET	Metric Longitudinal Leadscrew Nut	1
3-9-IMP	Inch Longitudinal Leadscrew Nut	1
3-10	Cross Bevel Wedge	1
3-11	Thrust Ball Bearing 8101	4
SX2.7LN.3-12(L)-MET	Metric Longitudinal Leadscrew(Large Table)	1
SX2.7LN.3-12(L)-IMP	Imperial Longitudinal Leadscrew(Large Table)	1
12(S)-MET	Metric Longitudinal Leadscrew(Small Table)	1
12(S)-IMP	Imperial Longitudinal Leadscrew(Small Table)	1
3-13-MET	Metric Dial Ring	2
3-13-IMP	Imperial Dial Ring	2
3-14	Leadscrew Clutch	1
3-15	Round Taper Pin 4x28	1
3-16	Sign Rivet 2x4	8
3-17	Indicator	2
3-18	Longitudinal Leadscrew Handwheel	1
3-19	Nut M8	2
3-20	Handle	2
3-21	Slotted Large Cap Screw M8x55	2
3-22	Spring Piece	2
3-23	Washer	1
3-24	Hex Socket Cap Screw M4x10	1
3-25	Hex Socket Cap Screw M6x10	1
3-26	Washer	1
SX2.7LN.3-27(L)-MET	Metric Scale Ruler(Large Table)	1
SX2.7LN.3-27(L)-IMP	Imperial Scale Ruler(Large Table)	1
3-27(S)-MET	Metric Scale Ruler(Small Table)	1
3-27(S)-IMP	Imperial Scale Ruler(Small Table)	1
3-28	Hex Socket Cap Screw M6x16	6
3-29	Round Pin 4x20	6
3-30	Zero Position Label	1
3-31	Small Handle Assembly	2
3-32	Wedge Screw	4
3-33	Lock Top Bar	1
3-34	Longitudinal Wedge Lock Top Bar	1

No.	Description	Qty.
3-35	Hex Socket Cap Screw M4x14	4
3-36	Hex Socket Cap Screw M5x20	4
3-37	Round Taper Pin 3x30	4
3-38	Left Sleeve	1
3-39	End Cap	1
3-40	Handwheel Assembly	1
3-41	Hex Locking Nut M8	1
3-42	Washer	1
3-43	Cylinder Oil Cup 6	1
3-44	End Cap Of Left Support	1
3-45	Compression Spring	1
3-46	Compression Spring 1x9.2x14	1
3-47	Flat Key 4x16	1

Parts Breakdown For SX2.7N Milling Drilling Centre

Diagram 4

Codes: SX2.7N.4-[part no.]

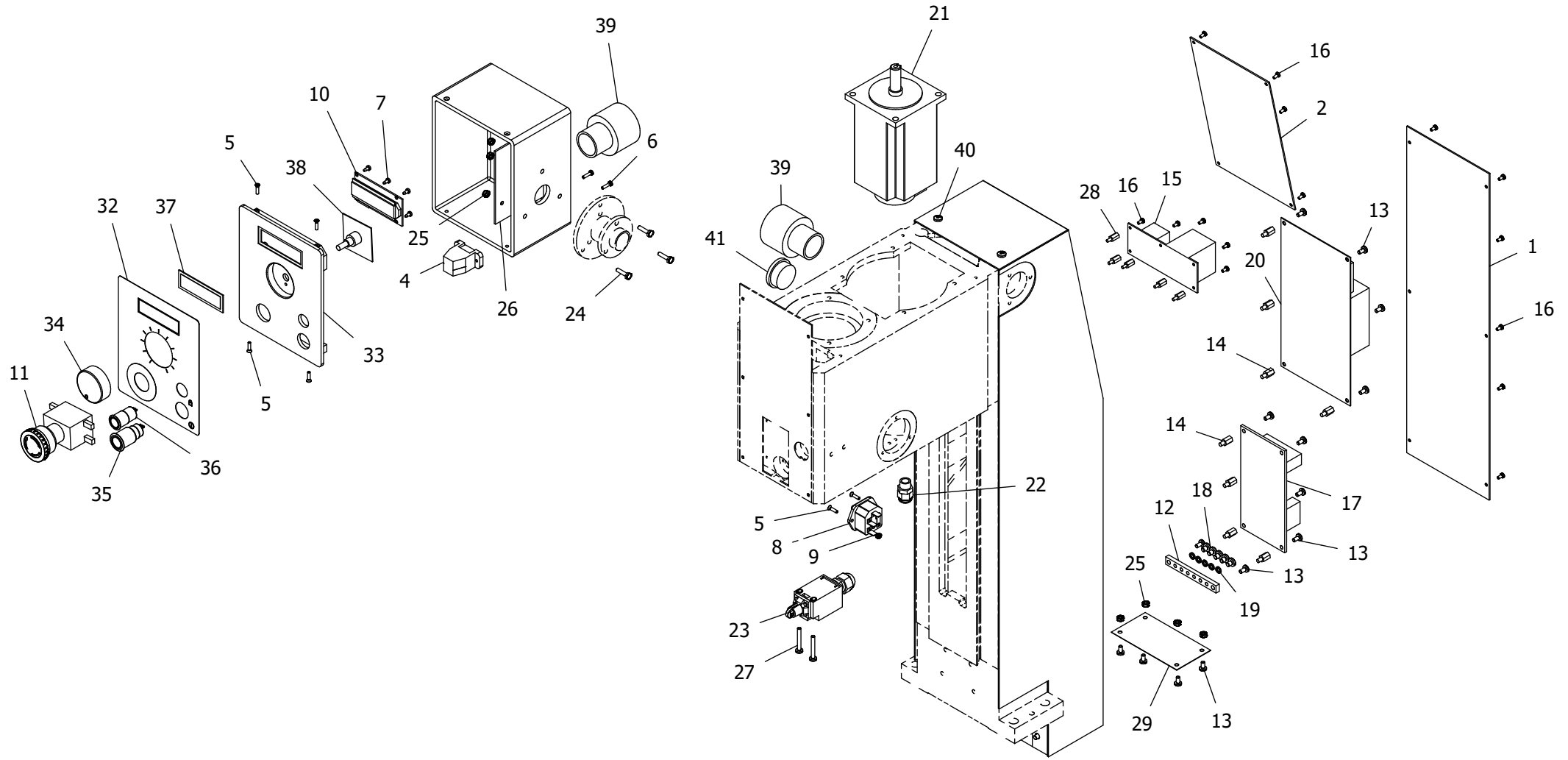


No.	Description	Qty.
4-1	Block	1
4-2	Cross Recessed Pan Head Screw M4x10	3
4-3	Washer 4	1
4-4	Support Plate	1
4-5	Back Plate	1
4-6	Washer 6	1
4-7	Inner Protect Guard	1
4-8	Outside Protect Guard	1
4-9	Knurled Screw M5x20	2
4-10	Washer 5	2
4-11	Hex Locking Nut	1
4-12	Support	1
4-13	Hex Socket Set Screw M4x6	1
4-14	Cross Recessed Pan Head Screw M4x8	2
4-15	Cross Recessed Sunk Screw M4x10	3
4-16	Spacer Bush	1
4-17	Rotate Shaft	1
4-18	Hex Socket Cap Screw M4x12	2
4-19	Strip	1
4-20	Strip	1
4-21	Block	1
4-22	Cross Recessed Pan Head Screw M5x6	6
4-23	Dust Guard	1
4-24	Guideway Protect Cover	1
4-25	Finder Block I	1
4-26	Finder Block II	1
4-27	∅6 Magnetic Steel	5

Parts Breakdown For SX2.7N Milling Drilling Centre

Diagram 5

Codes: SX2.7N.5-[part no.]



No.	Description	Qty.
5-1	Lower Cover	1
5-2	Upper Cover Plate	1
5-3	Rear Hood Assembly	1
5-4	USB Socket Assembly	1
5-5	Cross Recessed Sunk Screw M3x12	6
5-6	Cross Recessed Pan Head Screw M3x12	2
5-7	Tapping Screw St 2.9x6.5	4
5-8	Fuse Holder	1
5-9	Hex Nut M3	2
5-10	Liquid Crystal Board	1
5-11	Emergency Stop Switch	1
5-12	Grounding Row	1
5-13	Cross Recessed Pan Head Screw M4x8	14
5-14	Isolation Pillar	8
5-15-110V	DC Power Supply Board 110V	1
5-15-230V	DC Power Supply Board 230V	1
5-16	Cross Recessed Pan Head Screw M3x6	15
5-17	EMC Filter (Only Use For 230V)	1
5-18	Cross Recessed Pan Head Screw M4x6	5
5-19	Spring Washer 5	5
5-20-230V	Main Control Board/230V	1
5-20-110V	Main Control Board/110V	1
5-21	Brushless Motor	1
5-22	M12 Draw Lock	1
5-23	Safety Limit Switch	1
5-24	Hex Bolt M4x16	3
5-25	Hex Nut M4	7
5-26	Electrical Box Linings	1
5-27	Cross Recessed Pan Head Screw M4x30	2
5-28	Isolation Pillar	5
5-29	Lower Dust Screen	1
5-30	Shoe Plate	1
5-31	Electric Box	1
5-32	Switch Sign	1
5-33	Electric Box Cover	1
5-34	Knob ø40	1
5-35	Start-Stop Button	1
5-36	Tapping Button	1
5-37	Speed Display Cover	1
5-38	Potentiometer PCB	1
5-39	Quick Tube Connector	2
5-40	Screw M5x8	4
5-41	Nylon Stuffing Cover	1