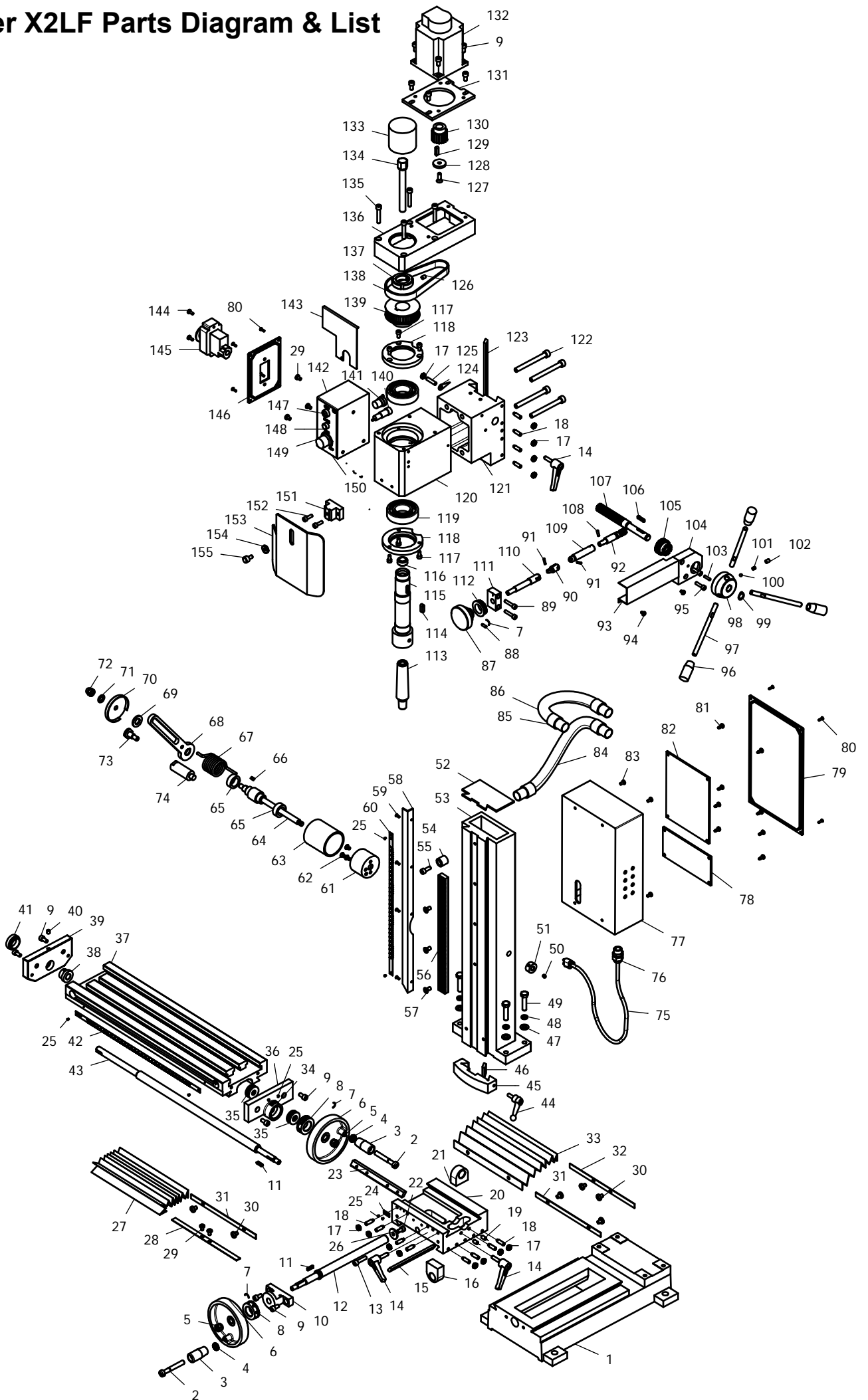


Super X2LF Parts Diagram & List



NO.	Description	QTY.
1	Base	1
2	Screw	2
3	Handle	2
4	Nut	2
5	Screw	2
6	Handle	2
7	Spring	3
8	Dial	2
9	Screw	14
10	X-axis feeding screw seat	1
11	Key	2
12	X-axis feeding screw	1
13	Screw	1
14	Handle	3
15	X-axis wedge	1
16	X-axis feeding screw nut	1
17	Nut	13
18	Screw	12
19	Screw	2
20	Saddle	1
21	Nut	1
22	Screw	1
23	Y-axis wedge	1
24	Label	1
25	Screw	8
26	Washer	1
27	Plate	1
28	Plate I	1
29	Screw	5
30	Screw	6
31	Plate II	2
32	Plate III	1
33	Plate III	1
34	Guide finger	1
35	Bearing	2
36	Bearing seat	1
37	Working	1
38	Vertical screw bracket left socket	1
39	End cover	1
40	Oil cup	1
41	Left bracket cover	1
42	Ruler	1
43	Y-axis feeding screw	1
44	Handle	1

NO.	Description	QTY.
45	Block	1
46	Wedge	1
47	Washer	4
48	Washer	4
49	Screw	4
50	Screw	1
51	Tighten ring	1
52	Cover	1
53	Colum	1
54	Fixed sleeve	1
55	Screw	1
56	Gear	1
57	Screw	3
58	Bracket	1
59	Screw	4
60	Ruler	1
61	Spring sleeve	1
62	Screw	3
63	Cover	1
64	Shaft	1
65	Washer	2
66	Key	1
67	Spring	1
68	Support	1
69	Washer	1
70	End cover	1
71	Washer	1
72	Nut	1
73	Screw	1
74	Support	1
75	Plug	1
76	Pulling off	1
77	PC board cover	1
78	Filter	1
79	PC board cover	1
80	Screw	8
81	Tapping screw	8
82	PC board	1
83	Screw	4
84	Soft pipe	1
85	Soft pipe connector	4
86	Soft pipe	1
87	Small Handle	1
88	Screw	1
89	Screw	2

NO.	Description	QTY.
90	Universal joint	1
91	Pin	2
92	Worm	1
93	Cover	1
94	Screw	2
95	Screw	2
96	Handle sleeve	3
97	Handle	3
98	Handle seat	1
99	Washer	1
100	Ball bearing	1
101	Spring	1
102	Screw	1
103	Pin	1
104	Worm support	1
105	Gear 29T	1
106	Key	1
107	Gear 14T	1
108	Pin	1
109	Sleeve	1
110	Universal shaft	1
111	Bracket	1
112	Dial	1
113	Shank	1
114	Key	1
115	Spindle	1
116	Fixed sleeve	1
117	Screw	6
118	Oil cover	2
119	Bearing	2
120	Spindle box	1
121	Spindle base	1
122	Screw	4
123	Wedge	1
124	Indicator	1
125	Screw	1
126	Screw	1
127	Screw	1
128	Washer	1
129	Key	1
130	Motor pully	1
131	Connected board	1
132	Brushless motor	1
133	Cover	1
134	M12 drawbar	1

NO.	Description	QTY.
135	Screw	4
136	Cover	1
137	Spindle nut	1
138	Pully	1
139	Spindle pully	1
140	Fuse seat	1
141	Air joint	1
142	Switch box	1
143	Connection Plate	1
144	Screw	2
145	Switch	1
146	Cover	1
147	Lump base	1
148	Indicating light	1
149	Metachoresis switch	1
150	Label	1
151	Cover support	1
152	Screw	2
153	Dust cover	1
154	Washer	1
155	Bolt	1