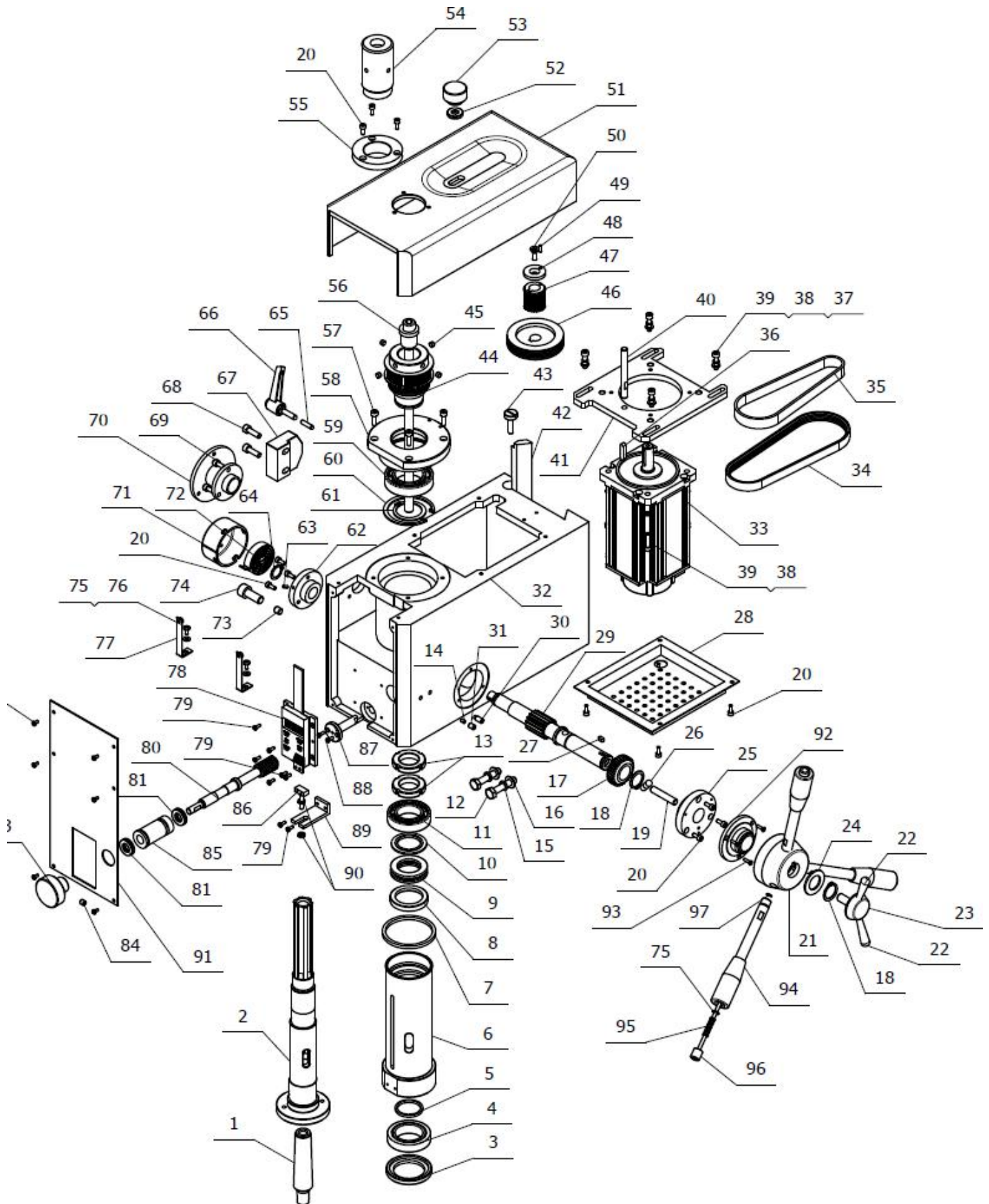


Product configuration: This drawing is for SX3.5 standard model, MT3, 220-240V, Metric

Diagram 1A

Codes: SX3.5.1A-[part no.]



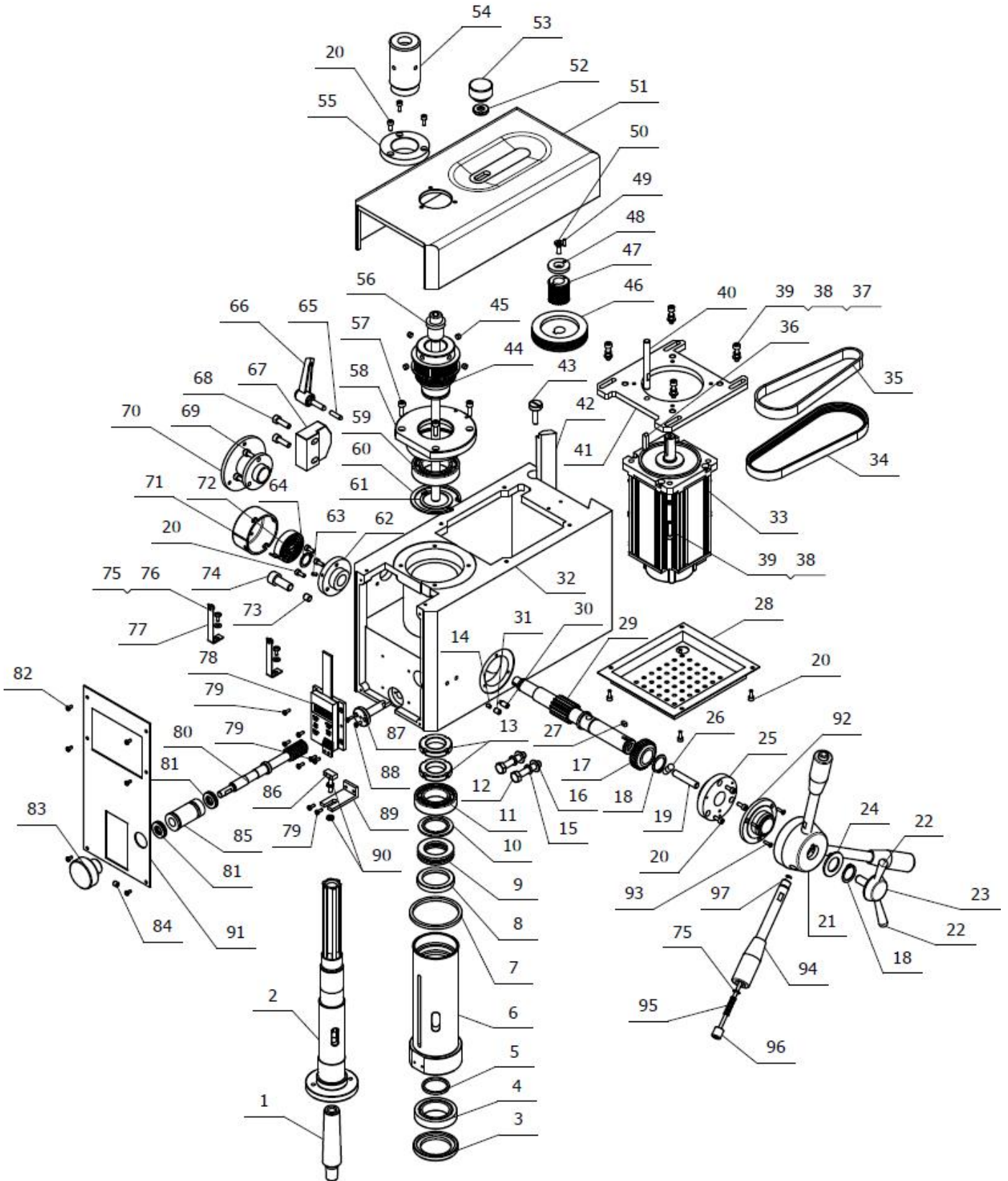
No.	Description	Qty.
1A-1	B16 Taper shank	1
1A-2	spindle	1
1A-3	spindle under oil seal I	1
1A-4	Taper roller bearing 32907	1
1A-5	Up washer	1
1A-6	Spindle sleeve	1
1A-7	Sleeve limit washer	1
1A-8	Spindle under oil seal II	1
1A-9	Thrust ball bearing 8106	1
1A-10	Up washer II	1
1A-11	Deep groove ball bearing 80106	1
1A-12	Hexagon headed bolt M8*40	2
1A-13	Slotted round nut M27*1.5	2
1A-14	Press cake	1
1A-15	Spring washer 8	2
1A-16	Washer 8	2
1A-17	bevel wheel	1
1A-18	Check ring 20	2
1A-19	Locking small shaft	1
1A-20	Socket head cap screw M4*10	13
1A-21	Handle seat	1
1A-22	Small handle	2
1A-23	Locking lever	1
1A-24	Adjust washer	1
1A-25	Shaft right support flange	1
1A-26	Ball 8	3
1A-27	Flat key 4*8	1
1A-28	Down cover	1
1A-29	Gear shaft	1
1A-30	Slotted cylindrical end fastening screw M6*14	1
1A-31	Internal hexagonal flat end fastening screw M6*8	1
1A-32	Spindle box	1
1A-33	Brushless motor	1
1A-34	poly V-belt J*456*13 (5 slot)	1
1A-35	Timing belt 3m*396*15	1
1A-36	Flat key 5*25	1
1A-37	Washer 5	4
1A-38	Spring washer 5	8
1A-39	Socket head cap screw M5*20	8
1A-40	Double end stud	1
1A-41	Motor fixed plate	1
1A-42	Oblique plug iron	1
1A-43	Iron stopper screw	2
1A-44	Spindle synchronous belt wheel	1
1A-45	Magnet steel Φ6	4
1A-46	Motor synchronous belt wheel	1
1A-47	Motor synchronous belt wheel	1
1A-48	Washer	1
1A-49	Round pin A3*10	1
1A-50	Cross recessed countersunk head screw H M6*16	1
1A-51	Box top cover	1

No.	Description	Qty.
1A-52	Washer	1
1A-53	Handle	1
1A-54	Dust cover on spindle II	1
1A-55	Dust cover on spindle I	1
1A-56	lifting rod	1
1A-57	Socket head cap screw M5*16	4
1A-58	Bearing seat	1
1A-59	Deep groove ball bearing 80107	1
1A-60	Check ring 62	1
1A-61	Check ring 35	1
1A-62	Shaft tooth left support flange	1
1A-63	Spring round pin 3*8	1
1A-64	Check ring 16	1
1A-65	Longitudinal stopper locking rod	1
1A-66	Small handle assembly	1
1A-67	Fixed limit block	1
1A-68	Socket head cap screw M6*20	2
1A-69	Socket head cap screw M5*12	3
1A-70	Connect bracket	1
1A-71	Disc spring housing	1
1A-72	Disc spring	1
1A-73	Spindle sleeve locking shaft	1
1A-74	Socket head cap screw M10*25	1
1A-75	Washer 4	5
1A-76	Cross recessed head screw H M4*8	2
1A-77	Fixed mount	2
1A-78	Digital display module GD300-165	1
1A-79	Cross recessed head screw H M3*8	8
1A-80	worm shaft	1
1A-81	Thrust ball bearing 12*22*5	2
1A-82	Cross recessed head screw H M3*6	6
1A-83	Fine feeding hand wheel	1
1A-84	Internal hexagonal flat end fastening screw M6*6	1
1A-85	Worm eccentric sleeve	1
1A-86	Square screw of display ruler	1
1A-87	Register pin	1
1A-88	Cross recessed countersunk head screw H M3*10	2
1A-89	Display fixing bracket	1
1A-90	Hex nut M5	2
1A-91	Panel	1
1A-92	Conductive ring assembly	1
1A-93	Cross recessed countersunk head screw H M3*12	3
1A-94	Operating handle assembly	3
1A-95	Compress spring 0.8*6*25	3
1A-96	Forward/Reverse joystick assembly	3
1A-97	Check ring 3	3

Product configuration: This drawing is for SX3.5D with digital readout display model, MT3, 220-240V, Metric

Diagram 1B

Codes: SX3.5.1B-[part no.]



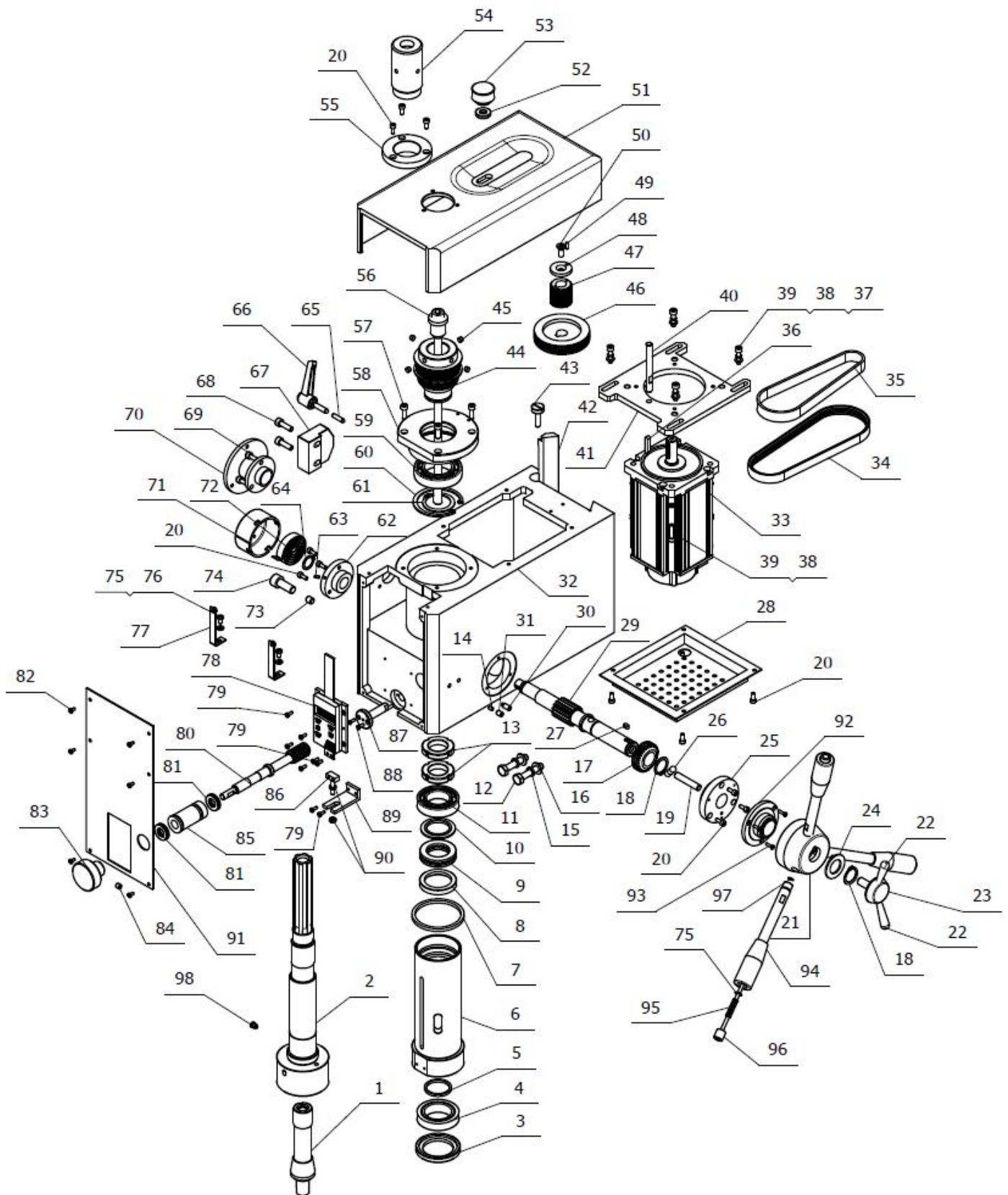
No.	Description	Qty.
1B-1	B16 Taper shank	1
1B-2	spindle	1
1B-3	spindle under oil seal I	1
1B-4	Taper roller bearing 32907	1
1B-5	Up washer	1
1B-6	Spindle sleeve	1
1B-7	Sleeve limit washer	1
1B-8	Spindle under oil seal II	1
1B-9	Thrust ball bearing 8106	1
1B-10	Up washer II	1
1B-11	Deep groove ball bearing 80106	1
1B-12	Hexagon headed bolt M8*40	2
1B-13	Slotted round nut M27*1.5	2
1B-14	Press cake	1
1B-15	Spring washer 8	2
1B-16	Washer 8	2
1B-17	bevel wheel	1
1B-18	Check ring 20	2
1B-19	Locking small shaft	1
1B-20	Socket head cap screw M4*10	13
1B-21	Handle seat	1
1B-22	Small handle	2
1B-23	Locking lever	1
1B-24	Adjust washer	1
1B-25	Shaft right support flange	1
1B-26	Ball 8	3
1B-27	Flat key 4*8	1
1B-28	Down cover	1
1B-29	Gear shaft	1
1B-30	Slotted cylindrical end fastening screw M6*14	1
1B-31	Internal hexagonal flat end fastening screw M6*8	1
1B-32	Spindle box	1
1B-33	Brushless motor	1
1B-34	poly V-belt J*456*13 (5 slot)	1
1B-35	Timing belt 3m*396*15	1
1B-36	Flat key 5*25	1
1B-37	Washer 5	4
1B-38	Spring washer 5	8
1B-39	Socket head cap screw M5*20	8
1B-40	Double end stud	1
1B-41	Motor fixed plate	1
1B-42	Oblique plug iron	1
1B-43	Iron stopper screw	2
1B-44	Spindle synchronous belt wheel	1
1B-45	Magnet steel Φ6	4
1B-46	Motor synchronous belt wheel	1
1B-47	Motor synchronous belt wheel	1
1B-48	Washer	1
1B-49	Round pin A3*10	1
1B-50	Cross recessed countersunk head screw H M6*16	1
1B-51	Box top cover	1

No.	Description	Qty.
1B-52	Washer	1
1B-53	Handle	1
1B-54	Dust cover on spindle II	1
1B-55	Dust cover on spindle I	1
1B-56	lifting rod	1
1B-57	Socket head cap screw M5*16	4
1B-58	Bearing seat	1
1B-59	Deep groove ball bearing 80107	1
1B-60	Check ring 62	1
1B-61	Check ring 35	1
1B-62	Shaft tooth left support flange	1
1B-63	Spring round pin 3*8	1
1B-64	Check ring 16	1
1B-65	Longitudinal stopper locking rod	1
1B-66	Small handle assembly	1
1B-67	Fixed limit block	1
1B-68	Socket head cap screw M6*20	2
1B-69	Socket head cap screw M5*12	3
1B-70	Connect bracket	1
1B-71	Disc spring housing	1
1B-72	Disc spring	1
1B-73	Spindle sleeve locking shaft	1
1B-74	Socket head cap screw M10*25	1
1B-75	Washer 4	5
1B-76	Cross recessed head screw H M4*8	2
1B-77	Fixed mount	2
1B-78	Digital display module GD300-165	1
1B-79	Cross recessed head screw H M3*8	8
1B-80	worm shaft	1
1B-81	Thrust ball bearing 12*22*5	2
1B-82	Cross recessed head screw H M3*6	6
1B-83	Fine feeding hand wheel	1
1B-84	Internal hexagonal flat end fastening screw M6*6	1
1B-85	Worm eccentric sleeve	1
1B-86	Square screw of display ruler	1
1B-87	Register pin	1
1B-88	Cross recessed countersunk head screw H M3*10	2
1B-89	Display fixing bracket	1
1B-90	Hex nut M5	2
1B-91	Panel (can fix digital display)	1
1B-92	Conductive ring assembly	1
1B-93	Cross recessed countersunk head screw H M3*12	3
1B-94	Operating handle assembly	3
1B-95	Compress spring 0.8*6*25	3
1B-96	Forward/Reverse joystick assembly	3
1B-97	Check ring 3	3

Product configuration: This drawing is for SX3.5 standard model, R8, 220-240V, Metric

Diagram 1C

Codes: SX3.5.1C-[part no.]



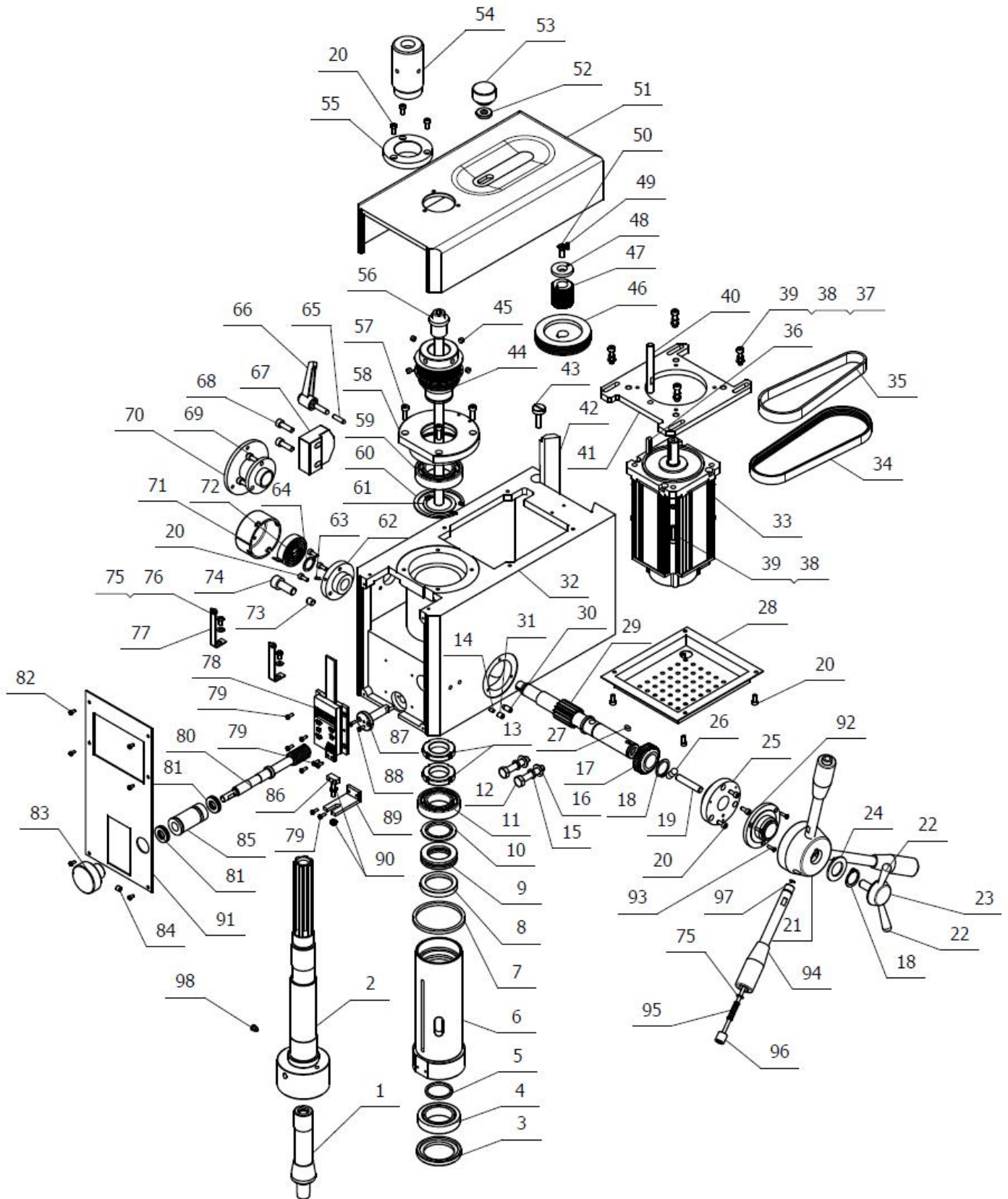
No.	Description	Qty.
1C-1	JT6 taper shank	1
1C-2	R8 spindle	1
1C-3	Spindle under oil seal I	1
1C-4	Taper roller bearing 32907	1
1C-5	Up washer	1
1C-6	Spindle sleeve	1
1C-7	Sleeve limit washer	1
1C-8	Spindle under oil seal II	1
1C-9	Thrust ball bearing 8106	1
1C-10	Up washer II	1
1C-11	Deep groove ball bearing 80106	1
1C-12	Hexagon headed bolt M8*40	2
1C-13	Slotted round nut M27*1.5	2
1C-14	Press cake	1
1C-15	Spring washer 8	2
1C-16	Washer 8	2
1C-17	bevel wheel	1
1C-18	Check ring 20	2
1C-19	Locking small shaft	1
1C-20	Socket head cap screw M4*10	13
1C-21	Handle seat	1
1C-22	Small handle	2
1C-23	Locking lever	1
1C-24	Adjust washer	1
1C-25	Shaft right support flange	1
1C-26	Ball 8	3
1C-27	Flat key 4*8	1
1C-28	Down cover	1
1C-29	Gear shaft	1
1C-30	Slotted cylindrical end fastening screw M6*14	1
1C-31	Internal hexagonal flat end fastening screw M6*8	1
1C-32	Spindle box	1
1C-33	Brushless motor	1
1C-34	poly V-belt J*456*13 (5 slot)	1
1C-35	Timing belt 3m*396*15	1
1C-36	Flat key 5*25	1
1C-37	Washer 5	4
1C-38	Spring washer 5	8
1C-39	Socket head cap screw M5*20	8
1C-40	Double end stud	1
1C-41	Motor fixed plate	1
1C-42	Oblique plug iron	1
1C-43	Iron stopper screw	2
1C-44	Spindle synchronous belt wheel	1
1C-45	Magnet steel Φ6	4
1C-46	Motor synchronous belt wheel	1
1C-47	Motor synchronous belt wheel	1
1C-48	Washer	1
1C-49	Round pin A3*10	1
1C-50	Cross recessed countersunk head screw H M6*16	1
1C-51	Box top cover	1

No.	Description	Qty.
1C-52	Washer	1
1C-53	Handle	1
1C-54	Dust cover on spindle II	1
1C-55	Dust cover on spindle I	1
1C-56	Lifting rod (R8)	1
1C-57	Socket head cap screw M5*16	4
1C-58	Bearing seat	1
1C-59	Deep groove ball bearing 80107	1
1C-60	Check ring 62	1
1C-61	Check ring 35	1
1C-62	Shaft tooth left support flange	1
1C-63	Spring round pin 3*8	1
1C-64	Check ring 16	1
1C-65	Longitudinal stopper locking rod	1
1C-66	Small handle assembly	1
1C-67	Fixed limit block	1
1C-68	Socket head cap screw M6*20	2
1C-69	Socket head cap screw M5*12	3
1C-70	Connect bracket	1
1C-71	Disc spring housing	1
1C-72	Disc spring	1
1C-73	Spindle sleeve locking shaft	1
1C-74	Socket head cap screw M10*25	1
1C-75	Washer 4	5
1C-76	Cross recessed head screw H M4*8	2
1C-77	Fixed mount	2
1C-78	Digital display module GD300-165	1
1C-79	Cross recessed head screw H M3*8	8
1C-80	worm shaft	1
1C-81	Thrust ball bearing 12*22*5	2
1C-82	Cross recessed head screw H M3*6	6
1C-83	Fine feeding hand wheel	1
1C-84	Internal hexagonal flat end fastening screw M6*6	1
1C-85	Worm eccentric sleeve	1
1C-86	Square screw of display ruler	1
1C-87	Register pin	1
1C-88	Cross recessed countersunk head screw H M3*10	2
1C-89	Display fixing bracket	1
1C-90	Hex nut M5	2
1C-91	Panel	1
1C-92	Conductive ring assembly	1
1C-93	Cross recessed countersunk head screw H M3*12	3
1C-94	Operating handle assembly	3
1C-95	Compress spring 0.8*6*25	3
1C-96	Forward/reverse joystick assembly	3
1C-97	Check ring 3	3
1C-98	Shoulder cylinder key	1

Product configuration: This drawing is for SX3.5D with digital readout display model, R8, 220-240V, Metric

Diagram 1D

Codes: SX3.5.1D-[part no.]



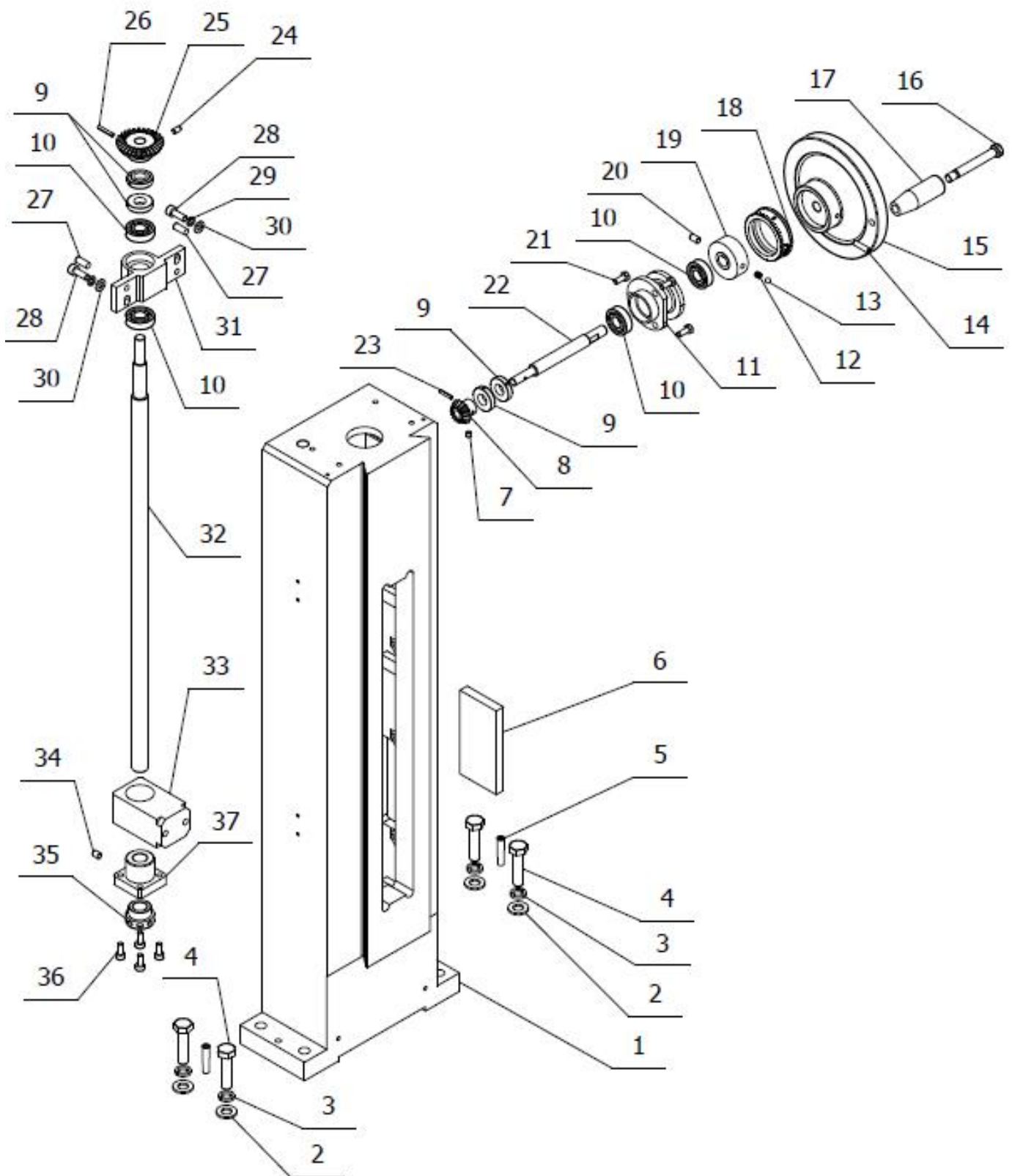
No.	Description	Qty.
1D-1	JT6 taper shank	1
1D-2	R8 spindle	1
1D-3	Spindle under oil seal I	1
1D-4	Taper roller bearing 32907	1
1D-5	Up washer	1
1D-6	Spindle sleeve	1
1D-7	Sleeve limit washer	1
1D-8	Spindle under oil seal II	1
1D-9	Thrust ball bearing 8106	1
1D-10	Up washer II	1
1D-11	Deep groove ball bearing 80106	1
1D-12	Hexagon headed bolt M8*40	2
1D-13	Slotted round nut M27*1.5	2
1D-14	Press cake	1
1D-15	Spring washer 8	2
1D-16	Washer 8	2
1D-17	bevel wheel	1
1D-18	Check ring 20	2
1D-19	Locking small shaft	1
1D-20	Socket head cap screw M4*10	13
1D-21	Handle seat	1
1D-22	Small handle	2
1D-23	Locking lever	1
1D-24	Adjust washer	1
1D-25	Shaft right support flange	1
1D-26	Ball 8	3
1D-27	Flat key 4*8	1
1D-28	Down cover	1
1D-29	Gear shaft	1
1D-30	Slotted cylindrical end fastening screw M6*14	1
1D-31	Internal hexagonal flat end fastening screw M6*8	1
1D-32	Spindle box	1
1D-33	Brushless motor	1
1D-34	poly V-belt J*456*13 (5 slot)	1
1D-35	Timing belt 3m*396*15	1
1D-36	Flat key 5*25	1
1D-37	Washer 5	4
1D-38	Spring washer 5	8
1D-39	Socket head cap screw M5*20	8
1D-40	Double end stud	1
1D-41	Motor fixed plate	1
1D-42	Oblique plug iron	1
1D-43	Iron stopper screw	2
1D-44	Spindle synchronous belt wheel	1
1D-45	Magnet steel Φ6	4
1D-46	Motor synchronous belt wheel	1
1D-47	Motor synchronous belt wheel	1
1D-48	Washer	1
1D-49	Round pin A3*10	1
1D-50	Cross recessed countersunk head screw H M6*16	1
1D-51	Box top cover	1

No.	Description	Qty.
1D-52	Washer	1
1D-53	Handle	1
1D-54	Dust cover on spindle II	1
1D-55	Dust cover on spindle I	1
1D-56	Lifting rod (R8)	1
1D-57	Socket head cap screw M5*16	4
1D-58	Bearing seat	1
1D-59	Deep groove ball bearing 80107	1
1D-60	Check ring 62	1
1D-61	Check ring 35	1
1D-62	Shaft tooth left support flange	1
1D-63	Spring round pin 3*8	1
1D-64	Check ring 16	1
1D-65	Longitudinal stopper locking rod	1
1D-66	Small handle assembly	1
1D-67	Fixed limit block	1
1D-68	Socket head cap screw M6*20	2
1D-69	Socket head cap screw M5*12	3
1D-70	Connect bracket	1
1D-71	Disc spring housing	1
1D-72	Disc spring	1
1D-73	Spindle sleeve locking shaft	1
1D-74	Socket head cap screw M10*25	1
1D-75	Washer 4	5
1D-76	Cross recessed head screw H M4*8	2
1D-77	Fixed mount	2
1D-78	Digital display module GD300-165	1
1D-79	Cross recessed head screw H M3*8	8
1D-80	worm shaft	1
1D-81	Thrust ball bearing 12*22*5	2
1D-82	Cross recessed head screw H M3*6	6
1D-83	Fine feeding hand wheel	1
1D-84	Internal hexagonal flat end fastening screw M6*6	1
1D-85	Worm eccentric sleeve	1
1D-86	Square screw of display ruler	1
1D-87	Register pin	1
1D-88	Cross recessed countersunk head screw H M3*10	2
1D-89	Display fixing bracket	1
1D-90	Hex nut M5	2
1D-91	Panel (use for fix display)	1
1D-92	Conductive ring assembly	1
1D-93	Cross recessed countersunk head screw H M3*12	3
1D-94	Operating handle assembly	3
1D-95	Compress spring 0.8*6*25	3
1D-96	Forward/reverse joystick assembly	3
1D-97	Check ring 3	3
1D-98	Shoulder cylinder key	1

**Product configuration: This drawing is for SX3.5 standard model,
220-240V, Metric**

Diagram 2A

Codes: SX3.5.2A-[part no.]

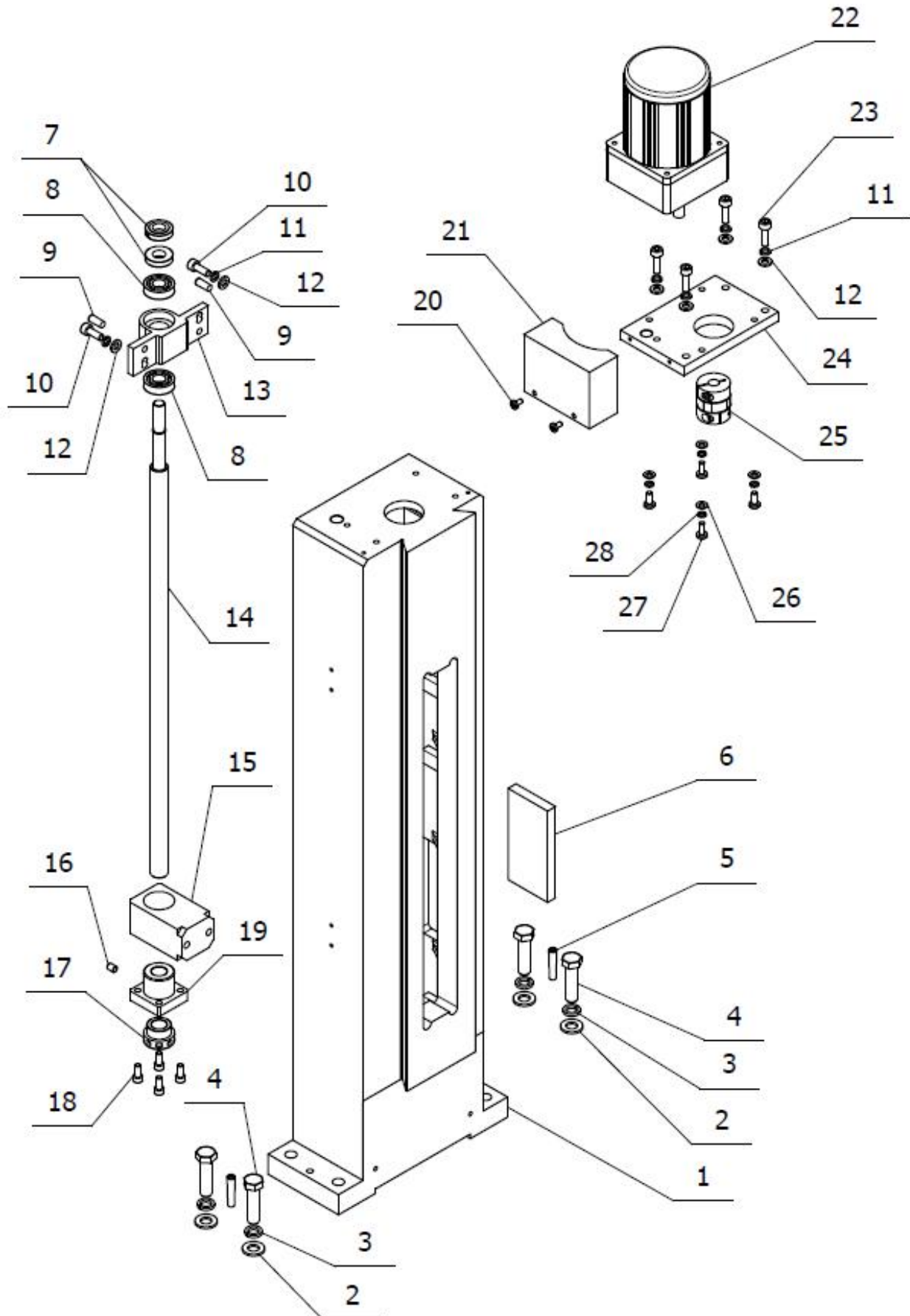


No.	Description	Qty.
2A-1	Fuselage	1
2A-2	Washer 10	4
2A-3	Spring washer 10	4
2A-4	Hexagon headed bolt M10*40	4
2A-5	Internal thread taper pin 6*32	2
2A-6	Magnetic block	1
2A-7	Internal hexagonal fixed screw-taper end M5*5	1
2A-8	Bevel gear	1
2A-9	Locking nut	4
2A-10	Deep Groove Ball Bearing 6001	4
2A-11	Lifting support seat	1
2A-12	Compress spring 0.5*4.65*9	1
2A-13	Steel ball 5	1
2A-14	Internal hexagonal fixed screw-flat end M5*20	1
2A-15*	Aluminium handwheel	1
2A-16	Handle sleeve screw	1
2A-17	Handle sleeve	1
2A-18*	Scale ring	1
2A-19	Shaft sleeve	1
2A-20	Internal hexagonal fixed screw-taper end M6*10	1
2A-21	Hexagon headed bolt M5*12	3
2A-22	Lifting shaft	1
2A-23	Elastic cylinder pin 3*16	1
2A-24	Internal hexagonal fixed screw-taper end M5*8	1
2A-25	Large conical gear	1
2A-26	Elastic cylinder pin 3*20	1
2A-27	Internal thread taper pin 6*16	2
2A-28	Hexagon head screw M6*16	2
2A-29	Spring washer M6	2
2A-30	Washer 6	2
2A-31	Leadscrew support	1
2A-32*	Lifting leadscrew	1
2A-33*	Nut support	1
2A-34	Internal hexagonal fixed screw-flat end M6*8	1
2A-35	Metric lifting lock nut	1
2A-36	Hexagon head screw M5*12	4
2A-37	Metric lifting leadscrew nut	1

Product configuration: This drawing is for SX3.5Z with Z-axis auto lifting model, 220-240V, Metric

Diagram 2B

Codes: SX3.5.2B-[part no.]

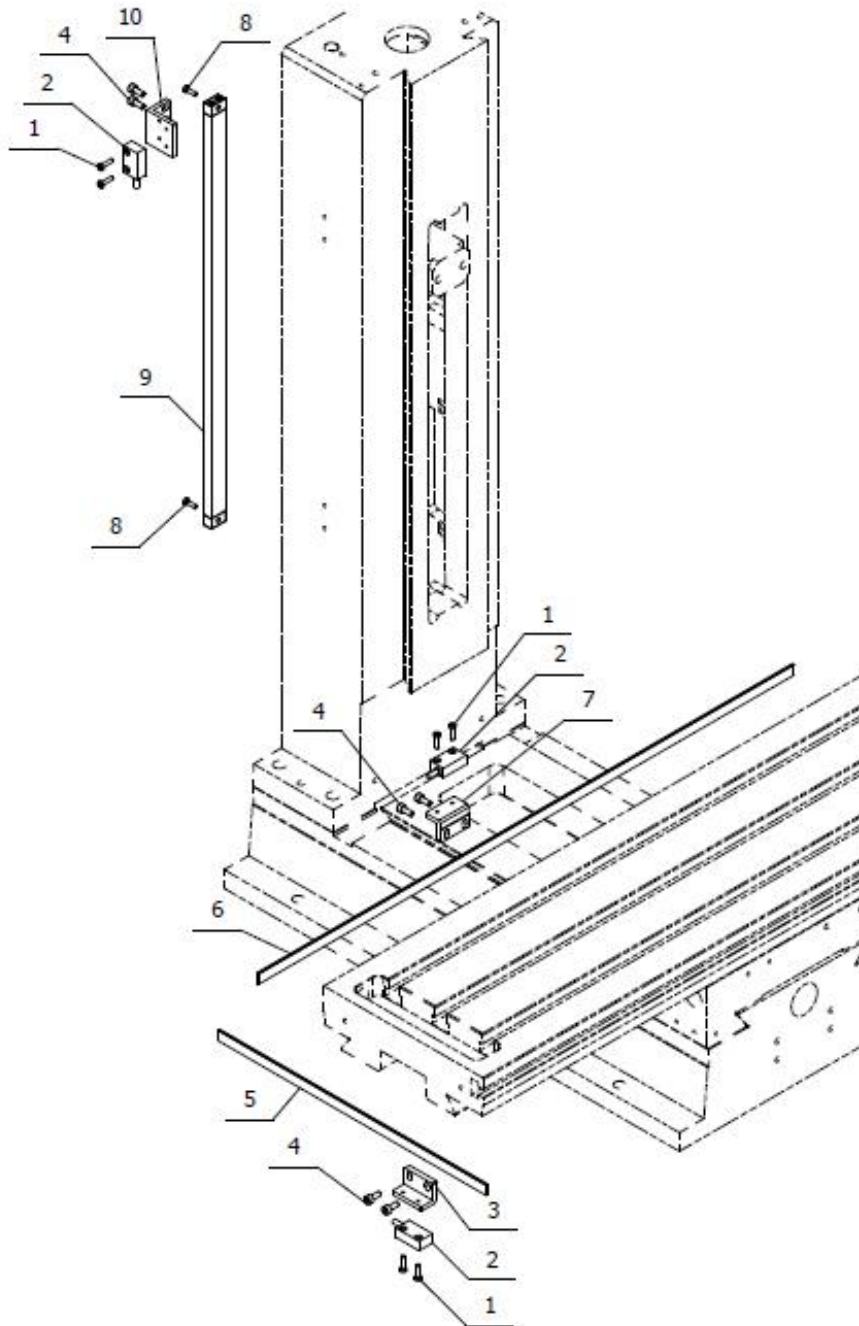


No.	Description	Qty.
2B-1	Fuselage	1
2B-2	Washer 10	4
2B-3	Spring washer 10	4
2B-4	Hexagon headed bolt M10*40	4
2B-5	Internal thread taper pin 6*32	2
2B-6	Magnetic block	1
2B-7	Locking nut	2
2B-8	Deep Groove Ball Bearing 6001	2
2B-9	Taper pin inside screw 6*16	2
2B-10	Hexagon head screw M6*16	2
2B-11	Spring washer 6	6
2B-12	Washer 6	6
2B-13	Leadscrew support	1
2B-14*	Lifting leadscrew	1
2B-15*	Nut support	1
2B-16	Internal hexagonal fastening screw-flat end M6*8	1
2B-17	Metric lifting lock nut	1
2B-18	Hexagon head screw M5*12	4
2B-19	Metric lifting leadscrew nut	1
2B-20	Cross recessed head screw H M4*8	2
2B-21	Lifting motor hood	1
2B-22	Induction-motor with gearbox	1
2B-23	Hexagon head screw M6*20	4
2B-24	Z motor connection plate	1
2B-25	Clutch	1
2B-26	Washer 5	4
2B-27	Cross recessed head screw H M5*12	4
2B-28	Spring washer 5	4

Product configuration: This drawing is for SX3.5D with 3-axis magnetic grid ruler assembly model,

Diagram 3A

Codes: SX3.5.3A-[part no.]

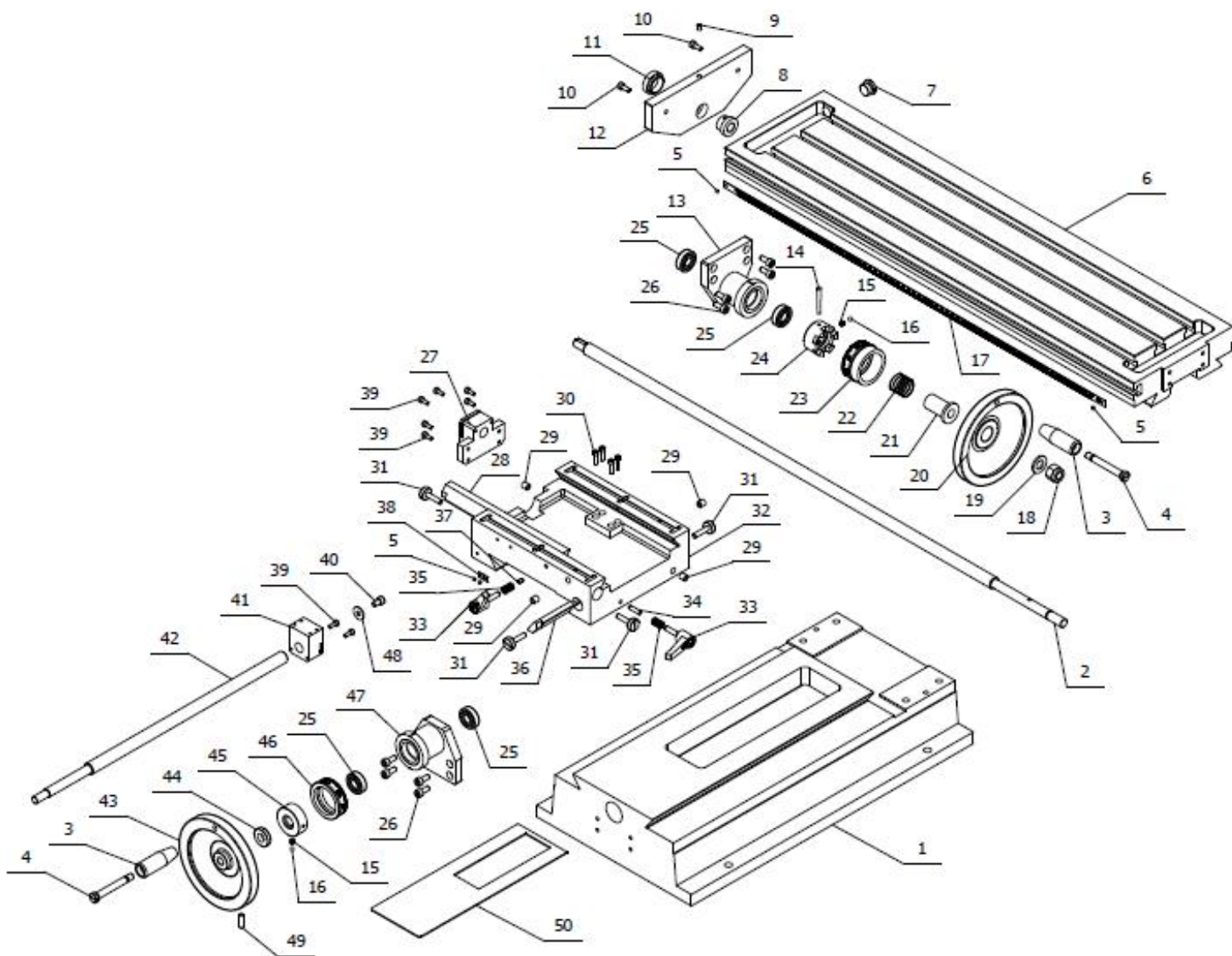


No.	Description	Qty.
3A-1	Cross recessed head screw type H M3*12	6
3A-2	Digital display head	3
3A-3	Longitudinal head bracket	1
3A-4	Hexagon head screw M4*10	6
3A-5	Longitudinal magnetic ruler	1
3A-6	Transverse magnetic ruler	1
3A-7	Transverse magnetic head bracket	1
3A-8	Cross recessed head screw type H M3*10	2
3A-9	X direction magnetic grating ruler assembly	1
3A-10	Vertical head bracket	1

Product configuration: This drawing is for SX3.5 series all model, Metric

Diagram 4A

Codes: SX3.5.4A-[part no.]

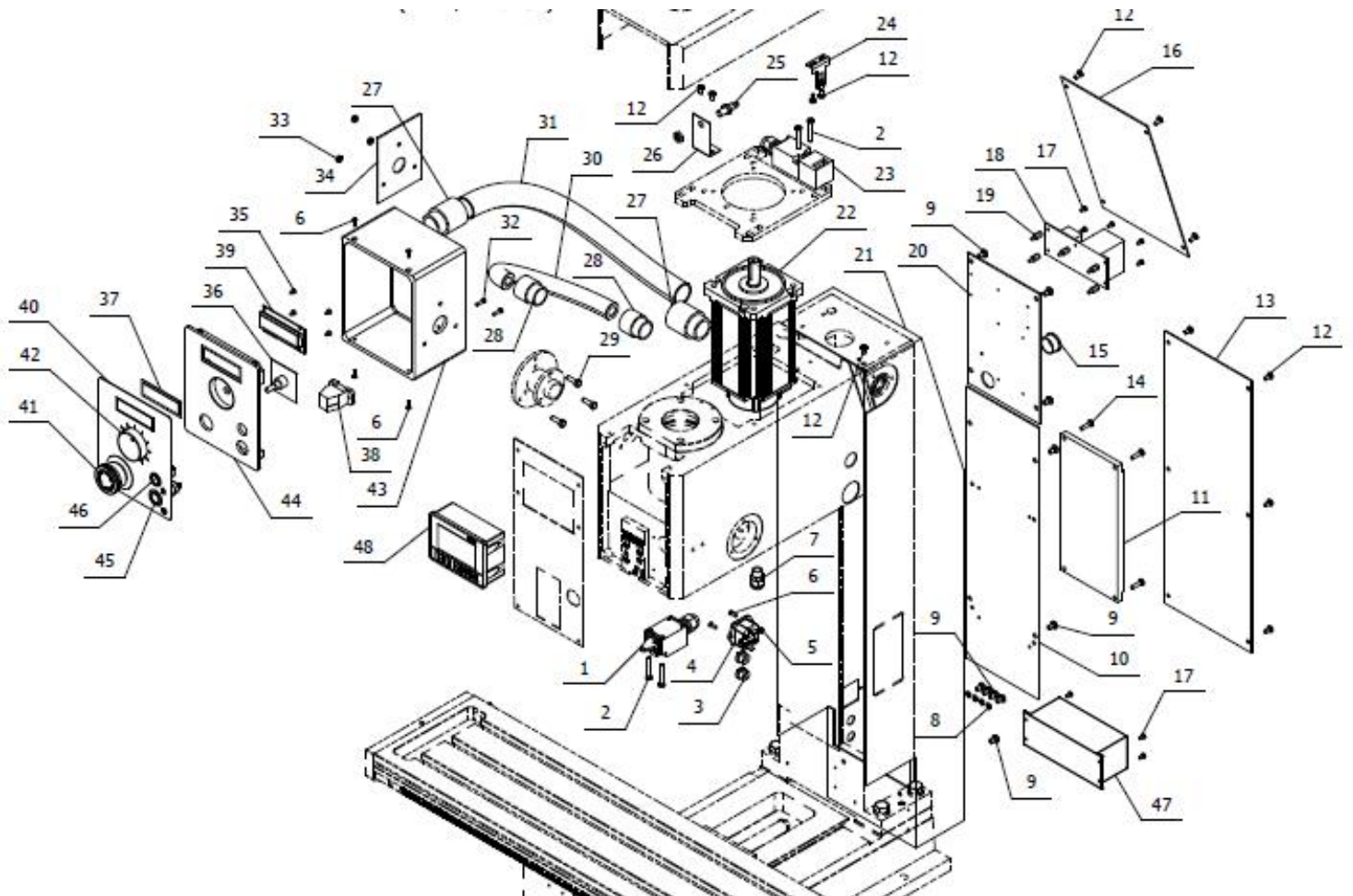


No.	Description	Qty.
4A-1	Base	1
4A-2	X-Axis metric leadscrew	1
4A-3	Handle sleeve	2
4A-4	Handle sleeve screw	2
4A-5	Label rivet 2*4	4
4A-6	Worktable	1
4A-7	End cap	1
4A-8	Longitudinal leadscrew support left sleeve	1
4A-9	Oil cup 6	1
4A-10	Hexagon head screw M5*12	2
4A-11	Left bracket cover	1
4A-12	Left bracket cover	1
4A-13	Bearing seat	2
4A-14	Round taper pin A4*40	1
4A-15	Compress spring 0.5*4.65*9	2
4A-16	Steel ball 5	2
4A-17	Graduated scale	1
4A-18	Hexagonal locking nut M12	1
4A-19	Washer 12	1
4A-20	Handlewheel	1
4A-21	Tight sleeve	1
4A-22	Compress spring	1
4A-23	Graduated scale	1
4A-24	Leadscrew clutch	1
4A-25	Deep groove ball bearing 6001	4
4A-26	Hexagon head screw M6*14	8
4A-27	X-axis metric leadscrew nut	1
4A-28	Crossrange oblique plug iron	1
4A-29	Oil cup 8	4
4A-30	Hexagon head screw M4*16	4
4A-31	Wedge screw	4
4A-32	Saddle	1
4A-33	Small handle assembly	2
4A-34	Longitudinal wedge locking crown bar	1
4A-35	Compress spring 1*9.2*14	2
4A-36	Longitudinal oblique plug iron	1
4A-37	Longitudinal wedge locking crown bar	1
4A-38	Zero sign	1
4A-39	Hexagon head screw M4*10	8
4A-40	Hexagon head screw M6*10	1
4A-41	Y-axis metric leadscrew nut	1
4A-42	Y-axis metric leadscrew	1
4A-43	Aluminium handwheel	1
4A-44	Locking nut	1
4A-45	Scale ring sleeve	1
4A-46	Scale ring	1
4A-47	Positioning ring	2
4A-48	Washer 6	1
4A-49	Internal hexagonal fastening screw-flat end M5*20	1
4A-50	Chip breaker plate	1

Product configuration: This drawing is for SX3.5 and SX3.5D with digital readout display model, 220-240V, Metric

Diagram 5A

Codes: SX3.5.5A-[part no.]

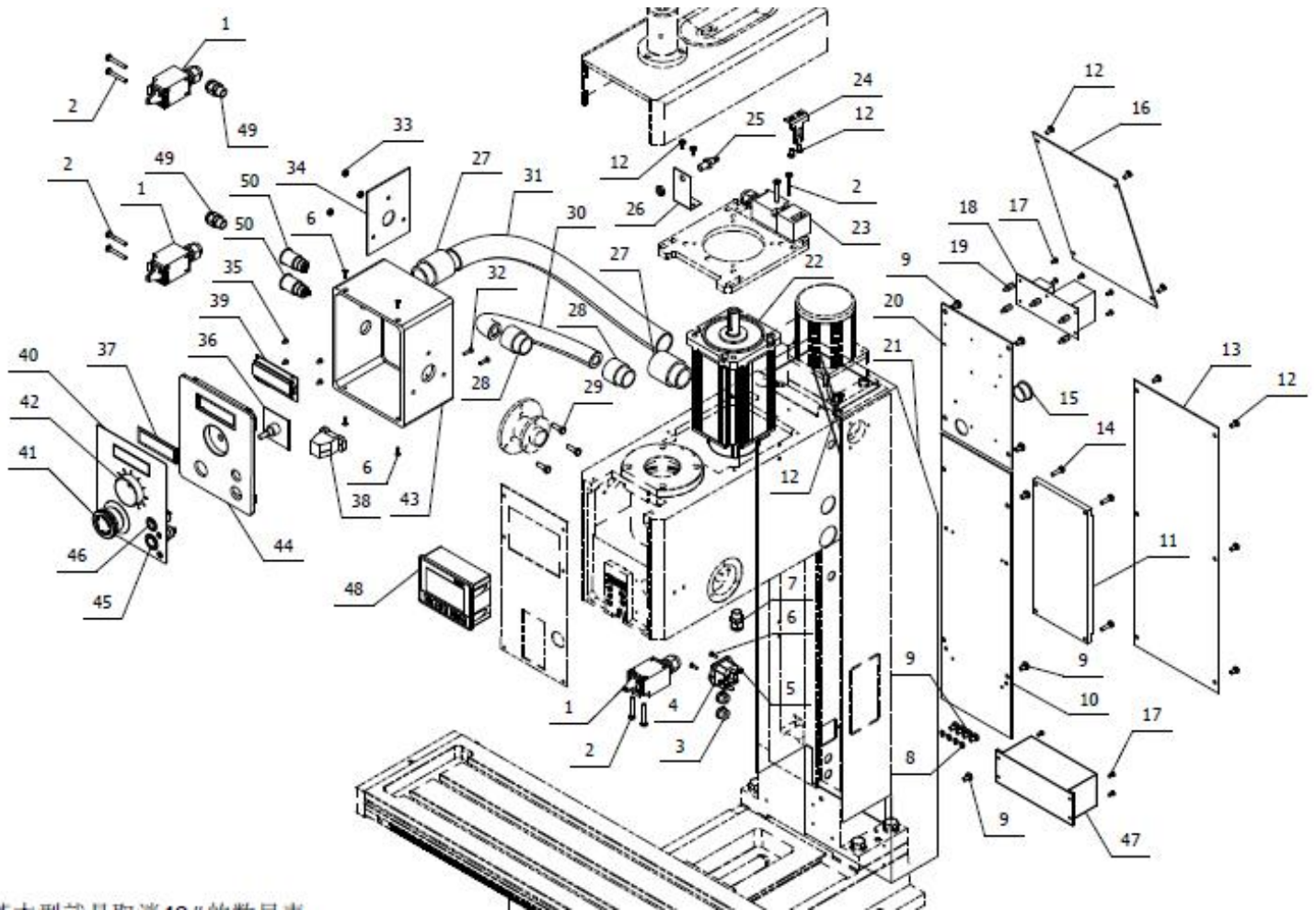


No.	Description	Qty.
5A-1	Safety limit switch QKS7	1
5A-2	Cross groove small disc screw type Z M4*30	4
5A-3	Thread buckle (use to fix display)	2
5A-4	Socket with fuse DB-14F	1
5A-5	Hex. nut M3	2
5A-6	Cross recessed countersunk head screw H M3*10	6
5A-7	Pull not off M12	1
5A-8	Spring washer M5	4
5A-9	Cross recessed head screw type H M5*8	14
5A-10	Lower liner	1
5A-11	PC Board	1
5A-12	Cross recessed head screw type H M4*8	16
5A-13	Lower cover plate	1
5A-14	Cross recessed head screw type H M4*16	4
5A-15	Buttoned guard ring SB-22	1
5A-16	Upper cover plate	1
5A-17	Cross recessed head screw type H M3*6	9
5A-18	DC power supply board ZD-1	1
5A-19	Hexagonal isolation column HTS-310	5
5A-20	Upper liner	1
5A-21	Post back cover	1
5A-22	Brushless motor	1
5A-23	safety switch	1
5A-24	Safety limit switch insert	1
5A-25	probe	1
5A-26	Probe bracket	1
5A-27	Quick hose connector	2
5A-28	Quick hose connector	2
5A-29	hexagon headed bolt	3
5A-30	Flexible pipe	1
5A-31	Flexible pipe	1
5A-32	Cross recessed head screw type H M3*12	2
5A-33	Hex nut M4	3
5A-34	Electric box liner	1
5A-35	Self tapping screw ST2.9*6.5	4
5A-36	Knob plate	1
5A-37	back plate	1
5A-38	One male and two mother extension line with fixed seat	1
5A-39	liquid crystal board	1
5A-40	Switch sign	1
5A-41	Emergency stop button HY57B	1
5A-42	Knob	1
5A-43	Electric box	1
5A-44	Electric box cover	1
5A-45	Start stop button M19	1
5A-46	Tapping button M16	1
5A-47	filter	1
5A-48	BG10V digital display	1

Product configuration: This drawing is for SX3.5Z and SX3.5D with digital readout display model, 220-240V, Metric

Diagram 5B

Codes: SX3.5.5B-[part no.]

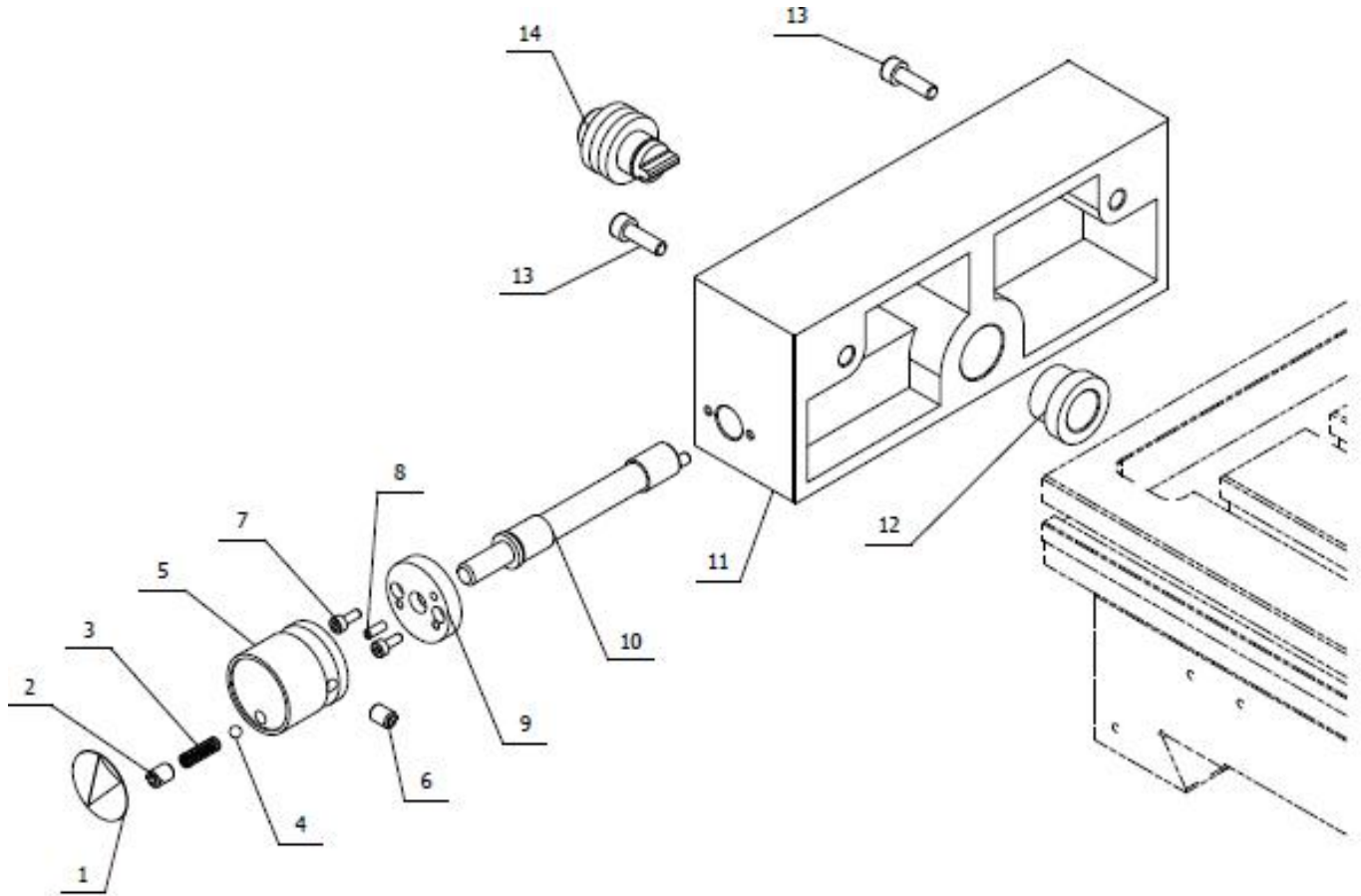


No.	Description	Qty.
5B-1	Safety limit switch QKS7	3
5B-2	Cross groove small disc screw type Z M4*30	8
5B-3	Thread buckle	2
5B-4	Socket with fuse DB-14F	1
5B-5	Hex. nut M3	2
5B-6	Cross recessed countersunk head screw H M3*10	6
5B-7	Pull not off M12	1
5B-8	Spring washer M5	4
5B-9	Cross recessed head screw type H M5*8	14
5B-10	Lower liner	1
5B-11	PC Board	1
5B-12	Cross recessed head screw type H M4*8	16
5B-13	Lower cover plate	1
5B-14	Cross recessed head screw type H M4*16	4
5B-15	Buttoned guard ring SB-22	1
5B-16	Upper cover plate	1
5B-17	Cross recessed head screw type H M3*6	9
5B-18	DC power supply board ZD-1	1
5B-19	Hexagonal isolation column HTS-310	5
5B-20	Upper liner	1
5B-21	Post back cover	1
5B-22	Brushless motor	1
5B-23	Safety switch QKS8	1
5B-24	Safety limit switch insert QKS8-1	1
5B-25	Probe head M8	1
5B-26	Probe head support	1
5B-27	Quick hose connector	2
5B-28	Quick hose connector	2
5B-29	Hexagon headed bolt M5*16	3
5B-30	Flexible pipe	1
5B-31	Flexible pipe	1
5B-32	Cross recessed head screw type H M3*12	2
5B-33	Hex nut M4	3
5B-34	Electric box liner	1
5B-35	Self tapping screw ST2.9*6.5	4
5B-36	Knob plate	1
5B-37	back plate	1
5B-38	One male and two mother extension line with fixed seat	1
5B-39	liquid crystal board	1
5B-40	Switch sign	1
5B-41	Emergency stop button HY57B	1
5B-42	Knob	1
5B-43	Electric box	1
5B-44	Electric box cover	1
5B-45	Start stop button M19	1
5B-46	Tapping button M16	1
5B-47	filter	1
5B-48	BG10V digital display	1
5B-49	Pull not off M12	2
5B-50	19 button	2

Product configuration: This drawing is for SX3.5P with power feeder model,

Diagram 6A

Codes: SX3.5.6A-[part no.]

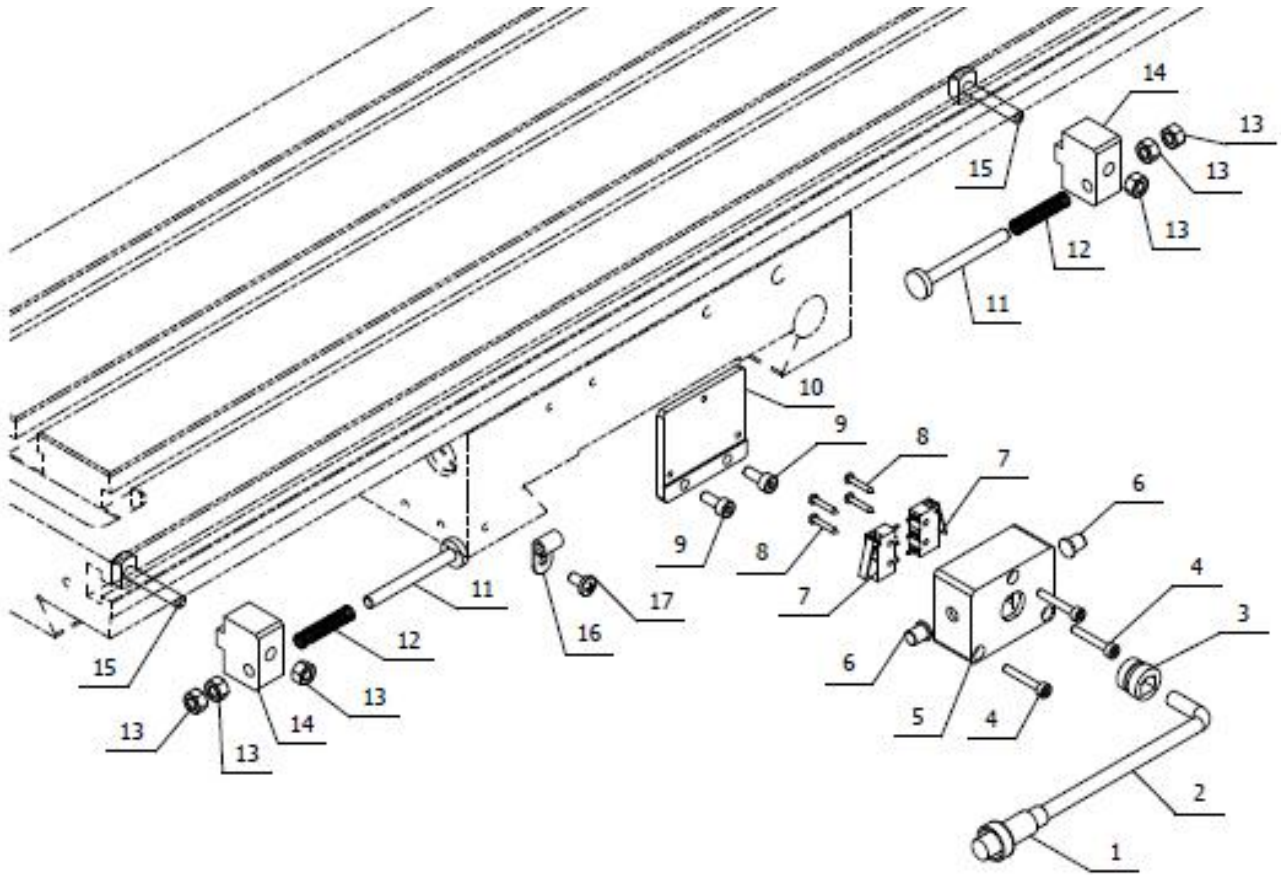


No.	Description	Qty.
6A-1	Shift indicator label	1
6A-2	Internal hexagonal fastening screw-flat end M6*8	1
6A-3	Compress spring 0.7*4*25	1
6A-4	Steel ball 4	1
6A-5	Handle	1
6A-6	Internal hexagonal fixed screw-taper end M6*8	1
6A-7	Hexagon head screw M3*8	2
6A-8	Spring round pin 3*8	1
6A-9	Flange	1
6A-10	Eccentric shaft	1
6A-11	Support seat	1
6A-12	Shaft sleeve	1
6A-13	Hexagon head screw M5*16	2
6A-14	Connector assembly	1

Product configuration: This drawing is for SX3.5P with power feeder model,

Diagram 6B

Codes: SX3.5.6B-[part no.]

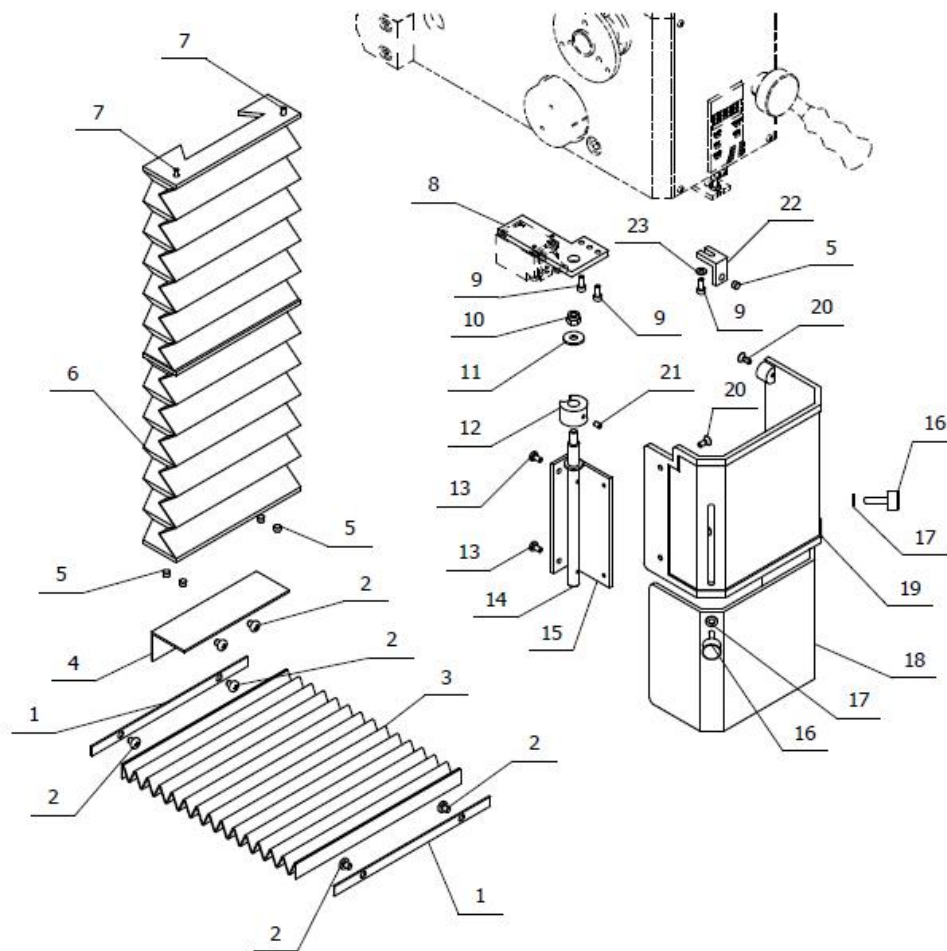


No.	Description	Qty.
6B-1	Three-core connector head	1
6B-2	Black cable	1
6B-3	Thread buckle	1
6B-4	Hexagon head screw M3*20	3
6B-5	Micro switch box	1
6B-6	Impact nail	2
6B-7	Micro switch	2
6B-8	Self tapping screw ST2.2-13	4
6B-9	Hexagon head screw M4*10	2
6B-10	Micro switch bottom plate	1
6B-11	Pin roll	2
6B-12	Compress spring 0.5*4.5*28	2
6B-13	Hex nut M5	6
6B-14	Limit block	2
6B-15	T type bolt	2
6B-16	wiring fixing button	1
6B-17	Cross recessed head screw type H M4*8	1

Product configuration: This drawing is for SX3.5 series all model

Diagram 7A

Codes: SX3.5.7A-[part no.]



No.	Description	Qty.
7A-1	Filler strip	2
7A-2	Cross recessed head screw type H M5*6	6
7A-3	Dust guard	1
7A-4	Column shield baffle	1
7A-5	Φ6 magnet steel	5
7A-6	Lifting guide rail shield	1
7A-7	Cross recessed head screw type H M4*10	2
7A-8	Tie strap	1
7A-9	Hexagon head screw M4*10	3
7A-10	Hexagonal locking nut M6	1
7A-11	Washer 6	1
7A-12	Spacer sleeve	1
7A-13	Cross recessed head screw type H M4*8	2
7A-14	Rotation shaft	1
7A-15	Support	1
7A-16	Knurled flat head screw M5*20	2
7A-17	Washer 5	2
7A-18	Inner shield	1
7A-19	Outer shield	1
7A-20	Cross recessed countersunk head screw H M4*10	3
7A-21	Internal hexagonal fixed screw-taper end M4*6	1
7A-22	Link stopper	1
7A-23	Washer 4	1