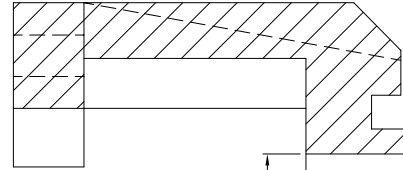
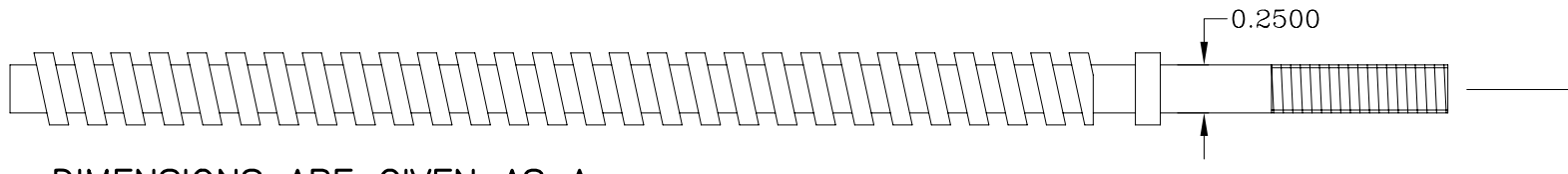
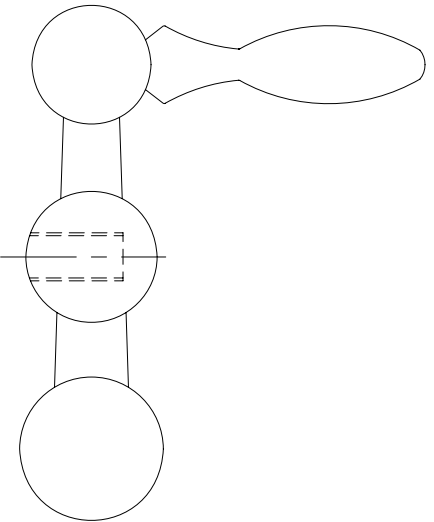
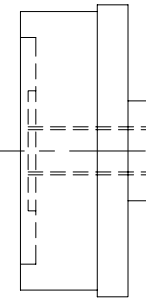


MYFORD STANDARD PART

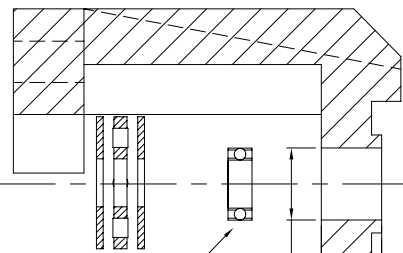


0.2500
0.1000
0.0300
0.5240



DIMENSIONS ARE GIVEN AS A
GUIDE ONLY, CHECK FROM
ACTUAL PARTS
REMEMBER
MEASURE TWICE CUT ONCE

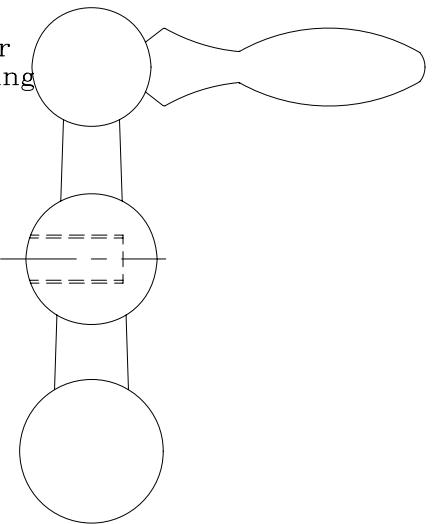
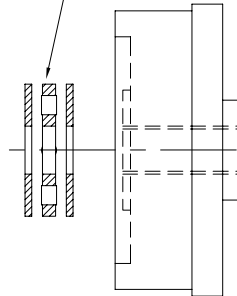
MODIFIED PART



NTA411
Needle Roller Thrust Bearing
R168ZZ
Single Row Ball Bearing

0.3750
0.3140
0.1000

NTA411
Needle Roller Thrust Bearing



D	
C	
B	
A	
REVISIONS	

Related Drawings:None
File: MYF001.dwg
Myford Lathe Modifications
Cross Slide Leadscrew Thrust Bearings Mod.

© Copyright Arc Euro Trade Ltd 2005
10 Arcdale Street, Syston, Leicester, LE7 1NA, England
Tel. 0116 269 5693 Fax. 0116 260 5805.
Dimensions given in inches unless otherwise stated.

Date: 31-5-05
SCALE 1:1
Drawn By: KCJ

MYF001

Arc Euro Trade Ltd